

SolarGrid Energy Solutions

Wireless outdoor AP base station installation



Overview

Where should APS be installed?

Install the AP in an area where structures, trees, or hills do not obstruct radio signals to and from the AP. We recommend that you install the AP no higher than 40 feet to support the wireless clients on the ground. Mounting all the APs at the same height provides the best throughput.

How do I ground an access point?

Proceed to Grounding the Access Point. The optional pivoting mounting kit AIR-MNT-ART1= contains a pivoting mounting bracket for both wall and pole mounting. This kit allows for adjusting the position of the AP by pivoting the AP along its vertical plane. You can also, using this kit, mount the AP to a ceiling in a horizontal plane.

How high should a wireless AP be installed?

We recommend that you install the AP no higher than 40 feet to support the wireless clients on the ground. Mounting all the APs at the same height provides the best throughput. If the SFP port is not in use, the port plug should remain in place and must be tightened to 12.5 lbf-in torque.

Do you need an outdoor access point?

For outdoor deployments, an access point that is fully against dust and water ingress is needed. To survive the harsh environment outdoors, the access points must support an IP rating of IP65 or more, or irreversible damages might arouse due to water penetration.

How do I install an access point?

Identify the components needed for the installation, see the Typical Access Point Installation Components. Connect a CAT5e or better Ethernet cable from your wired LAN network to the power injector. To reduce the risk of fire, use only No. 24 AWG or larger telecommunication line cord. Statement 1023.

Should APS be mounted on a pole?

Pole mounting is a good option when installing the APs away from the buildings, which is more common in a wireless mesh system where no cables need to be pulled to each location. It's ideal for providing a 360° overall coverage for your premises, but if the access point is mounted too close to the pole, the RF will be severely attenuated.

Wireless outdoor AP base station installation



RUCKUS T750 Outdoor Access Point

RUCKUS T750 Outdoor Access Point
Features Outdoor locations such as stadiums, arenas can have the most demanding wireless requirements due to ...

UniFi Outdoor WiFi Access Points

5 days ago · Deploy WiFi, anywhere.
Incredibly versatile access points for extending WiFi over campuses, indoors and outside. Mesh-ready with long ...



ESS



outdoor-or-indoor - Altai Technologies

The Altai C1 series WiFi CPE/AP is designed as an essential component in the Altai Super WiFi system to extend outdoor Wi-Fi coverage into indoor areas ...

Step-by-Step Outdoor Access Point Installation ...

Sep 19, 2024 · This comprehensive guide covers the step-by-step process for outdoor access point installation to provide reliable network coverage in open ...



2.4GHz 300Mbps Outdoor Wireless Base Station

May 10, 2020 · TP-LINK's 2.4GHz 300Mbps Outdoor Wireless Base Station is specifically designed to provide an effective solution for outdoor wireless ...

TP-Link WBS510 Outdoor Wireless Base-Station

The TP-Link WBS510 Outdoor Wireless Base-Station has a broad operating frequency channels that ensure less wireless interference. In addition it has ...



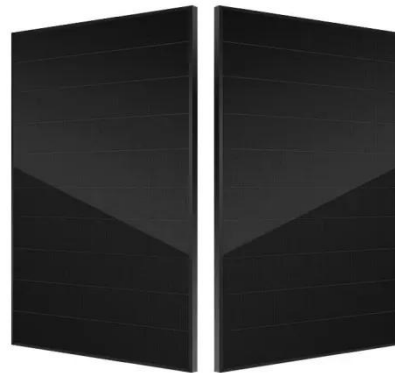
Installing Outdoor APs

Jul 28, 2025 · Installing Outdoor APs Learning About Standard Mounting Brackets Solid Wall Mounting (Using an Angle-Adjustable Mounting Bracket) Pole Mounting (Using an Angle ...



WBS2400_5800 IG Sector

5 days ago · The new product name emphasizes the difference in architecture (Multiple Radio system) and the value to customer, superiority in performance (coverage, capacity, indoor ...

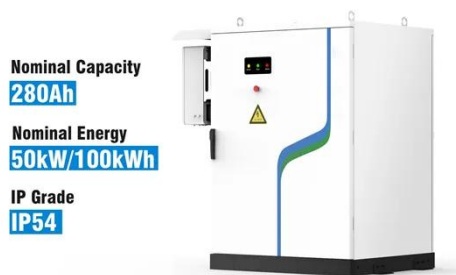


WBS210 , 2.4GHz 300Mbps Outdoor Wireless Base Station

Oct 5, 2020 · TP-LINK's 2.4GHz 300Mbps Outdoor Wireless Base Station is specifically designed to provide an effective solution for outdoor wireless networking applications. With its ...

WBS2400_5800 IG

Jun 29, 2025 · WBS-2400/5800 is a new category of Broadband Wireless Base Station designed from the ground up for metro-Wi-Fi deployments. The system employs wireless packet ...

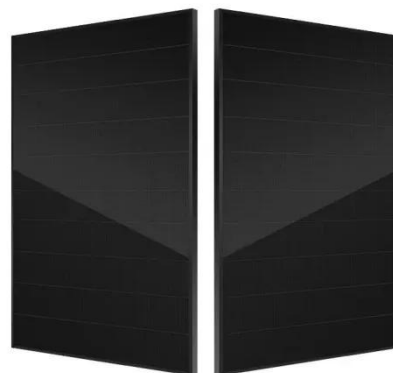


CW9163E Installation Guide

About this Guide This guide provides instructions on installing and configuring your CW9163E access point. This guide also provides mounting instructions ...

Quick Installation Guide

Oct 8, 2022 · Deploy the LAN cable from indoor to outdoor location of AP installation. The LAN cable should follow 568B standard, and use the network cable tester to test. The height of ...



UniFi Wi-Fi BaseStation Quick Start Guide

Dec 5, 2024 · Introduction Thank you for purchasing the Ubiquiti Networks® UniFi® Quad-Radio 802.11ac Wave 2 Access Point with Dedicated Security and

Beamforming Antenna. This Quick ...



5GHz 300Mbps Outdoor Wireless Base Station

Oct 5, 2020 · Long-Distance Wireless Data Transmission Two external RP-SMA antenna interfaces allow the Outdoor Wireless Base Station to integrate seamlessly with TP-LINK's line ...



TP-LINK WBS510 5GHz 300Mbps Outdoor ...

Buy TP-LINK WBS510 5GHz 300Mbps Outdoor Wireless Base Station at Wootware with fast shipping & superb service.

KuWiFi WiFi 6 Wireless AP Router WiFi Extender Signal Booster Outdoor

KuWiFi WiFi 6 Wireless AP Router WiFi Extender Signal Booster Outdoor Indoor Long Range 360-degree omnidirectional

Access Point WiFi Dual Band 1800Mbps Supports ...



Access Point Outdoor Mounting Kit Quick Setup Guide (902 ...

The T310n is a dual-band 802.11ac Wave 2 outdoor AP which includes a narrow (30 degree) internal antenna, enabling a focused beam. This is critical in deployments like stadiums, where ...

Video Series: Best Practices for Installing Outdoor Wireless ...

Apr 15, 2020 · This video series outlines the various best practices to be followed and common pitfalls to be avoided while installing outdoor wireless access points.



5GHz 300Mbps Outdoor Wireless Base Station

Oct 5, 2020 · Long-Distance Wireless Data Transmission Two external RP-SMA antenna interfaces allow the Outdoor Wireless Base Station to integrate ...



5GHz 300Mbps Outdoor Wireless Base Station

May 10, 2020 · Long-Distance Wireless Data Transmission Two external RP-SMA female antenna interfaces allow the Outdoor Wireless Base Station to integrate seamlessly with TP-LINK's line

...



WBS510 , 5GHz 300Mbps Outdoor Wireless Base Station , TP ...

Oct 5, 2020 · TP-LINK's 5GHz 300Mbps Outdoor Wireless Base Station is specifically designed to provide an effective solution for outdoor wireless networking applications. With its centralized ...



Quick Installation Guide Outdoor Access Point / Client ...

Apr 20, 2023 · Quick Installation Guide Outdoor Access Point / Client Bridge

ENH500-AX , EnStation 6 ENH500-AX
Device*2 Waterproof*2



Tarana Wireless / 3.65 GHz / Base Station (AP) / Outdoor ...

G1 is the world-s first instance of next-generation FWA, powered by a number of industry firsts in radio network performance, interference cancellation, and cloud-based automation. 3.65 GHz ...

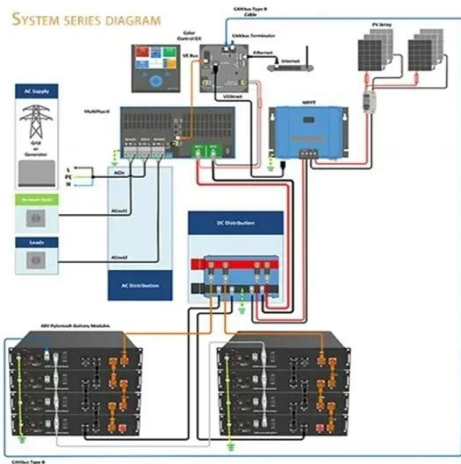
Best Outdoor Wireless Access Points: Buyer's Guide

Feb 26, 2020 · These are the best outdoor wireless access points I have found that deliver speeds suitable for most people, are weatherproof and support ...



UniFi WiFi BaseStation XG Datasheet

Dec 5, 2024 · Ecosystem enables the system integrator to effectively and efficiently create wireless network



designs of any size, from small to large, with the potential for unlimited ...

Buy MikroTik Outdoor WiFi Online. Official UK Distributor.

Jul 28, 2025 · MikroTik Outdoor WiFi
MikroTik Outdoor WiFi solutions are specifically engineered to deliver reliable wireless connectivity in outdoor environments. Known for their durability and ...



Product Model
HJ-ESS-215A(100KW/215KWh)
HJ-ESS-115A(50KW 115KWh)

Dimensions
1600*1280*2200mm
1600*1200*2000mm

Rated Battery Capacity
215KWH/115KWH

Battery Cooling Method
Air Cooled/Liquid Cooled





AP-370 Series IG Rev 01

May 3, 2023 · Aruba 370 Series Outdoor Access Points Installation Guide The Aruba 370 Series outdoor wireless access points (AP-374, AP-375 and AP-377) support IEEE 802.11ac Wave 2 ...

Manual-Product Manuals , Official Wavlink ...

Dive into detailed instructions on how to configure, install, and optimize your Wavlink products for the best

connectivity and efficiency experience.
Visit the ...

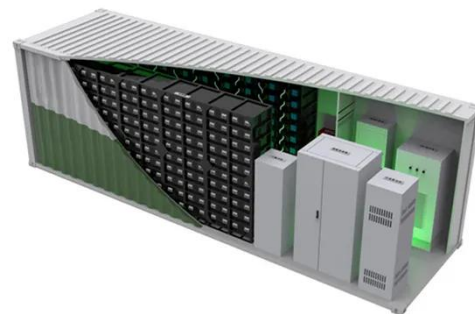


Step-by-Step Outdoor Access Point Installation ...

Sep 19, 2024 · Outdoor access points play a vital role in expanding your wireless network over larger distances, offering reliable and high-performance ...

WiFi BaseStation XG

Tri-radio WiFi 5 AP with 12 spatial streams and a selectable beamforming antenna, designed for high-density applications at large venues.



Contact Us

For catalog requests, pricing, or partnerships, please visit:
<https://www.wf-budownictwo.pl>