

SolarGrid Energy Solutions

Wireless Communication Simulcast Base Station



Overview

What is simulcast (simultaneous broadcasting)?

Simulcast (simultaneous broadcasting) means multiple base stations transmitting the same voice (or data) signal on the same frequency at the same time. This means that every frequency pair – probably your existing channels – can each provide greatly extended coverage across a very wide area.

How does a simulcast network work?

A simple Simulcast network Two sites provide coverage across a wide geographical area. Each site has a single base station set to the identical frequency pair. Wherever your first responders travel, throughout the coverage area, their mobile and portable radios can all transmit and receive on the same channel.

What is Hytera DMR simulcast system?

Hytera DMR simulcast system consists of MSO (Mobile Switching Office), Base Station , Dispatch System, NMS, Service Terminals and Bearer Network. One MSO supports up to 100 Base Stations or 200 carriers. A single DMR simulcast Base Station can support up to 2 carriers. Compact design, high integration, easy for delivery and deployment.

What is a simulcast system?

In simulcast system, the radio is capable of roaming and handover seamlessly between different BSs , the ongoing communication can continue normally during handover. Simulcast system can provide good voice performance in overlap area as radios in overlap area can always receive the best voice frame through dynamic voting.

How can simulcast system provide good voice performance in overlap area?

Simulcast system can provide good voice performance in overlap area as

radios in overlap area can always receive the best voice frame through dynamic voting. As a voting center, MSO is used to analyze each voice frame received from Base Stations in real time.

What is a base station monitoring system based on?

Research on Wireless Communication Base Station Monitoring System Based on Artificial Intelligence and Network Security 2.1 Research on Key Technologies of Wireless Communication The communication of network is the fundamental of wireless communication .

Wireless Communication Simulcast Base Station



BS (Base Station)

Mar 4, 2023 · A base station (BS) is a key component of modern wireless communication networks, providing the interface between wireless devices ...

Types of Base Stations

Jul 23, 2025 · Base stations are one of the widely used components in the field of wireless communication and networks. It is an access point or base point of a ...



The Base Station in Wireless Communications: ...

Nov 10, 2023 · Base station, also known as BTS (Base Transceiver Station), is a key device in wireless communication systems such as GSM. Equipped with ...

The Design and Realization of Multi-Site Simulcast System Base Station

Multi-site simulcast communication system is a system that several base stations' transmitters send the same information with the same frequency to receivers. It is seen as amelioration of ...



Simulcast digital mobile radio networks

Jan 18, 2018 · A lot of base station configurations permit to realize simulcast networks with various backbone Links: TCP/IP (also wireless one), E1/T1, twisted wires, narrowband ...

HS Code 85176100

- Base stations for wireless network apparatus (weight: 6 kg, dimensions: 35x35x12 cm) - Base stations for wired communication networks (weight: 9 kg, dimensions: 48x48x22 cm)



What is a Base Station in Telecommunications?

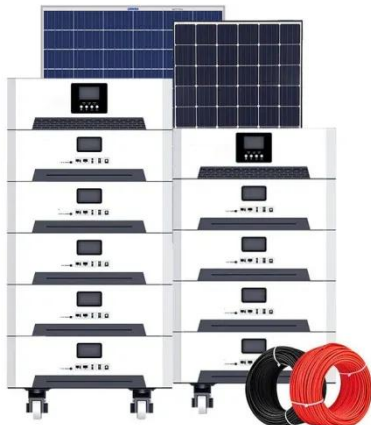
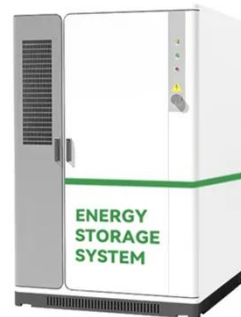
What is a Base Station? A base station is a critical component in a telecommunications network. A fixed

transceiver that acts as the central ...



interference.dvi

Aug 27, 2003 · Intimately coupled with frequency reuse is the phenomenon called co-channel interference. This is because the same frequency band is used by two or more base stations ...



TB9400 Base Station/Repeater

Aug 19, 2025 · Explore the TB9400 base station, the foundation of a Tait P25 Phase 2-upgradable system. Access white papers and specification ...

Ensure Connection and Response for Emergency ...

Jun 20, 2023 · Wireless Link Module
Simulcast Base Station Wireless IP
Gateway Vehicular Dual Band Repeater
Backpack Dual Band Repeater

Commander and team leader's Radio Team ...



Simulating 4G/5G base stations and terminals based on ...

System principle: Using LW-USRP/SDR-LW software radio hardware, combined with srsRAN, OpenAirInterface5g and other software platforms, to achieve the construction of 4G/5G analog ...

GTBIT ECE Department Wireless Communication Q-1 ...

Feb 7, 2023 · Ans-6 An Electronic Serial Number (ESN) is a unique identification number embedded by manufacturers on a microchip in wireless phones. The ESN is automatically ...



Hytera DMR Simulcast ...

Sep 8, 2021 · Hytera DMR simulcast system consists of MSO (Mobile Switching Office), Base Station, Dispatch System, NMS, Service Terminals and Bearer Network. One MSO supports ...



Integrating Base Station with Intelligent Surface for 6G Wireless

Nov 19, 2024 · In particular, integrating passive IS into the base station (BS) is a novel solution to enhance the wireless network throughput and coverage both cost-effectively and energy ...



Voltage range: 691.2-947.2V
>6000 cycles (100%DOD)
Rated battery capacity: 216KWH (customizable)
EMS communication: 4G/CAN/RS485

Designing simulcast networks

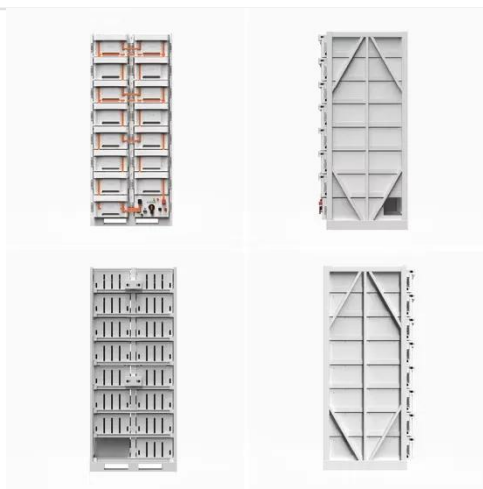
Nov 1, 2008 · Designing simulcast networks Simulcast is an abbreviation for simultaneous broadcast, and in the context of land mobile radio, it means simultaneous transmission from ...



Simulcast planning with the TSB-88 Monte Carlo studies in ...

Aug 13, 2025 · A simulcast network will have multiple base stations, often including tall macro sites and low power repeaters to fill in difficult spots, with all

base stations transmitting the ...



Land Mobile Radio Systems

Land Mobile Radio Systems (LMR) is a push-to-talk two-way communication between radio transceivers. LMR systems can vary from base station units, mobile stations installed in ...

RadioPlanner 3.0 RF Planning Tool , Wireless ...

RadioPlanner 3.0 is a planning tool for: - Mobile networks: 5G (NR), LTE, UMTS, GSM, GSM-R, WCDMA - Public safety land mobile networks: P25, TETRA, ...



UNIT IV MULTIPATH MITIGATION TECHNIQUES

Jan 22, 2025 · of diversity used in wireless systems. Conventional wireless systems consist of an elevated base station antenna and a mobile antenna

close to the ground. The existence of a ...



How Simulcast works , Tait Communications Blog

Oct 14, 2013 · Simulcast (simultaneous broadcasting) means multiple base stations transmitting the same voice (or data) signal on the same frequency at ...



base station in 5g

Dec 8, 2023 · A 5G base station is a complex system that integrates advanced RF technology, digital signal processing, and network architecture to deliver ...



P25 & TETRA Network Planning Using SignalPro

Feb 6, 2020 · "Tuning" Simulcast delays
Simulcast is when you use multiple base stations operating on the same radio channel to enhance coverage in overlap

...



Combined simulcasting and dedicated services in a wireless

The invention relates broadly to the field of telecommunications and particularly to wireless telecommunication systems. More particularly, it relates to a method for efficiently and flexibly ...

Co-frequency simulcast system based on dual link mode ...

The utility model realizes the dual standby of wired IP links and wireless links, expands the scope of communication, has high communication reliability, and is applicable to emergency ...



Design of Wireless Communication Base Station Monitoring ...

Jan 1, 2023 · In the experiment, using the supervised machine learning algorithm, the program of the wireless



communication base station monitoring system is designed by setting the working ...

Land Mobile Radio (LMR) 101

Jun 25, 2020 · WHAT ARE LMR SYSTEMS?
LMR systems are terrestrially-based, wireless communications systems commonly used by federal, state, local, tribal, and territorial ...



Critical Communication Base Station -- Global ...

o Multi-Technology - The world's first outdoor base station featuring 4 technologies in one box
o Multi-Frequency - Extending coverage by ...

What is a multicast radio system?

Jun 3, 2020 · Conventional wireless communication is mostly a single-base station communication system, which uses a pair of intermediate frequency ...



When and when not to use Simulcast

Mar 4, 2015 · We define simulcast, discuss why it is suitable for cities and unsuitable for rural areas, go over some use case scenarios, differentiators ...

US10652847B2

A relay station comprising: a time server that supplies time-synchronized pulse data generated every second; and a symbol counter that counts symbol periods used in communication, ...



US20190098593A1

Definitions the present invention relates to communication technology and to a simulcast controller, relay station, and communication method operated according to a simulcast ...



Base Stations

Jul 23, 2025 · The present-day tele-space is incomplete without the base stations as these constitute an important part of the modern-day scheme of wireless ...



Technical characteristics and application of ...

Jul 1, 2020 · Conventional co-channel simulcast system is to set up multiple relay stations in a region, so that each relay station forms a link interconnection and ...

Simulation Investigation of Base Station Deployment ...

Jul 15, 2022 · Wireless train communication network (WTCN) is a promising technology to improve the intelligentization level of the high speed

train (HST). To achieve reliable



Handling simultaneous messages in wireless communication

Nov 8, 2021 · It is called multi-station simulcast, or more colloquially, simulcasting. In a multi-station simulcast paging system, each base station transmits the same RF signal (FSK) ...

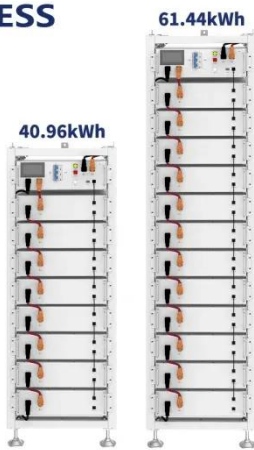
What Is A Base Station?

Apr 22, 2024 · A base station is an integral component of wireless communication networks, serving as a central point that manages the transmission and ...



The Design and Realization of Multi-Site Simulcast System Base Station

Abstract Multi-site simulcast communication system is a system that several base stations' transmitters send the same information with the same

ESS

frequency to receivers. It is ...

Contact Us

For catalog requests, pricing, or partnerships, please visit:
<https://www.wf-budownictwo.pl>