

SolarGrid Energy Solutions

What size 24v inverter should I buy



Overview

Before we go any further, we highly recommend that you choose a pure sine wave inverter. This type of inverter delivers high-quality electricity, similar to your utility company. This way, none of your appliance.

Should I buy a 24 volt inverter?

Take your time before purchasing a 24-volt inverter, and make sure it is the right inverter for your power needs. Buying an inverter should come after you lay out the plan for your system. Some of the links in this post are affiliate links.

What size DC to AC Power Inverter should I buy?

The size you choose depends on the watts (or amps) of what you want to run. We recommend you buy a larger model than you think you'll need, at least 10% to 20% more than your largest load.

How do I choose the right inverter size?

Here is our last bit of advice on how to select the correct inverter size: Check our inverter size chart. List all your appliances in the function of their power output. Apply our inverter size formula. Do not exceed 85% of your inverter's maximum power continuously. Oversize your inverter for extra appliances in the future.

What are the different solar inverter sizes?

Solar generators range in size from small generators for short camping trips to large off-grid power systems for a boat or house. Consequently, inverter sizes vary greatly. During our research, we discovered that most inverters range in size from 300 watts up to over 3000 watts. In this article, we guide you through the different inverter sizes.

How much power does an inverter need?

The continuous power requirement is actually 2250 but when sizing an inverter, you have to plan for the start up so the inverter can handle it. Third,

you need to decide how long you want to run 2250 watts. Let's say you would like to power these items for an eight-hour period.

How to choose a power inverter?

Second, select an inverter. For this example, you will need a power inverter capable of handling 4500 watts. The continuous power requirement is actually 2250 but when sizing an inverter, you have to plan for the start up so the inverter can handle it. Third, you need to decide how long you want to run 2250 watts.

What size 24v inverter should I buy



The Best 24 Volt Inverter

Sep 25, 2021 · This article reviews some of the best, moderately priced 24V inverters currently on the market and then reviews standard criteria you should consider when selecting an inverter. ...

What Size Inverter Do I Need ?A Complete Guide to ...

Jun 12, 2025 · Discover how to select the perfect inverter size for your solar or backup power system. Learn to calculate power requirements, account for surge loads, match battery ...



DCAC POWER , What size inverter should I buy?

What size inverter should I buy? (and Formula to convert Amps to Watts) We carry many different sizes, and several brands of power inverters. See our Inverters Page for specifications on ...

What Size Inverter Do You Need? A Complete ...

Jun 4, 2025 · Choosing the right inverter size is crucial--too small, and your appliances won't work; too large, and you'll waste money. This guide will help ...



What Size Inverter Do I Need

Feb 28, 2025 · In this guide, we'll walk you through everything you need to know to calculate the right inverter size for your specific needs, from basic ...



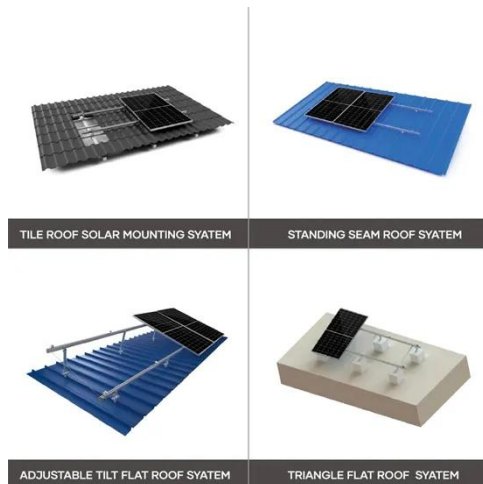
What Size Inverter For a 100W Solar Panel?

But make sure the inverter has enough capacity for what you need. The number of solar panels you can connect to inverter depends on its capacity. If the inverter is 200W, you can only use ...



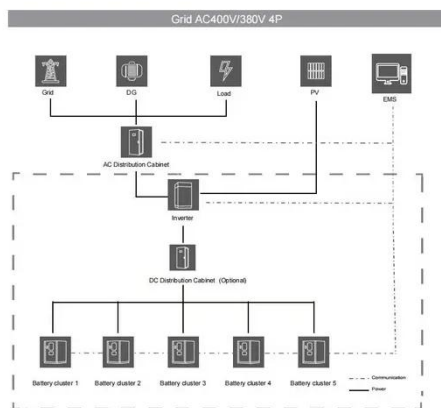
What Size Inverter You Need (Calculations)

Oct 6, 2022 · To understand what size inverter you need, you need to know a few fundamental values. The first one is the total wattage of the devices you use



How to Choose to right Size Off-Grid Power Inverter

Q: Firstly, what is an inverter? A: A device which changes direct current (DC) into alternating current (AC) Power.
Example: It may turn (convert) 12v, or 24v or 48v DC into 230V AC power ...



How Do You Choose the Right Inverter Size for Your Specific ...

Oct 28, 2024 · To choose the right inverter size for your specific power needs, first calculate your total power requirements in watts. Multiply the battery capacity (in Ah) by its voltage (typically ...

What size fuse between battery and inverter?

Apr 22, 2024 · Placing a fuse, or an overcurrent protection device in general, that is sized correctly, between the

battery and the inverter, would prevent any ...



Inverter Size Chat: What Size Inverter Do I Need?

Inverter Size Chart To help you quickly find your inverter size, I have created this easy-to-read inverter size chart. The watt rating of each appliance is a general ...

Power Inverter Buying Guide , Eaton

Power Inverter Buying Guide Start your search for the perfect power inverter with our overview of the most important features to consider.



Should I choose a 12V, 24V, 48V, or high-voltage battery?

Jun 11, 2025 · General Tips Higher voltage = greater efficiency: Larger systems benefit from higher voltage by reducing cable size and power loss.

Match your inverter: Your battery bank

...



What Size Fuse for 400, 750, 1000, 1500, 2000, 3000-watt Inverter

Quick Answer The 400, 750, 1000, 1500, 2000, 3000 watt inverter would require 40A, 75A, 100A, 150A, 200A, 300A respectively. Remember that the size of the Fuse would also determine ...



What Size Inverter Do I Need?

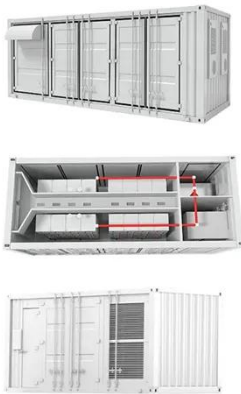
Whether you're looking for what size inverter is best for your house or something as simple as an inverter for power your TV, the proper size will be a

...

Inverter Size Chat: What Size Inverter Do I Need?

That's why I've put together a handy inverter size chart in order for you to quickly find out what size inverter is best for your needs. We'll start by going

through ...



What Size Inverter Do I Need To Run A Tv?

Mar 3, 2023 · You'd need about a 100-500 watt inverter to run any size TV. The exact size will depend on the size and wattage consumption of your TV. Now ...

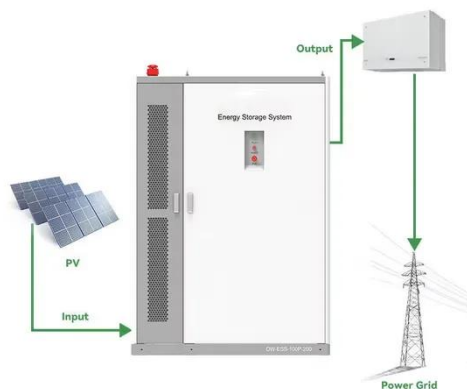
What Size Inverter Should I Use for My 24V, 206Ah Battery ...

May 21, 2025 · A 2-3kW inverter is pretty standard for a 24V system. Just keep in mind that you don't want to pull over 100A from your battery if you can avoid it, as that can lead to higher ...



Find the Right Inverter Size: How Big An Inverter ...

Oct 25, 2022 · Before you buy a power inverter for your car, you need to know what size to purchase. Here's how to estimate your power needs.



What Size Inverter Should I Use for My 24V, 206Ah Battery ...

May 21, 2025 · I'm looking for advice on the best inverter size for my system. I have two 12V, 206Ah lithium iron phosphate batteries that I'll connect in series, giving me a 24V, 206Ah setup.

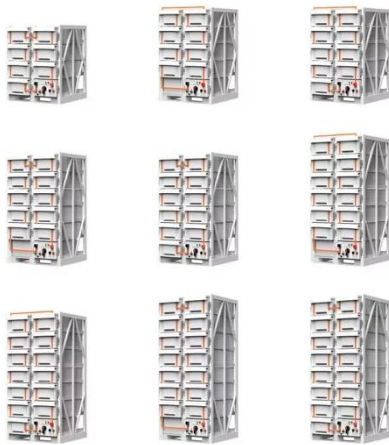


Frequently Asked Questions About Power Inverters

Power Inverter FAQ Frequently Asked Questions about Power Inverters What does a power inverter do, and what can I use one for? Using an inverter for basic emergency home backup ...

What Size Inverter Do I Need for a 100 Watt ...

Wondering what size inverter you need for a 100 watt solar panel? Here's how to find the right inverter and calculate its size.



What Size Wire For Any Inverter: Inverter Wire ...

Choosing the right cables for your inverter can be downright confusing. This guide helps you find the right size wire for any sized inverter.

What Size Inverter Can I Run Off a 100Ah Battery? A ...

Aug 13, 2024 · When selecting an inverter to pair with a 100Ah battery, it's crucial to understand the power requirements of your appliances and the capabilities of your inverter. The right ...



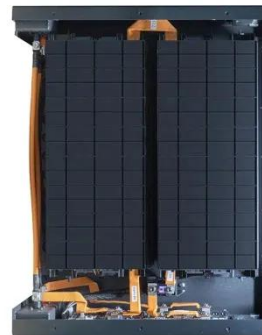
Sizing the Right Inverter for 100ah Battery

Jun 7, 2023 · In this guide, I will walk you through the process of sizing the right inverter for a 100ah battery along with an inverter size chart.



What size inverter should I buy? (and Formula to convert Amps ...

Short Answer: The size you choose depends on the watts (or amps) of what you want to run (find the power consumption by referring to the specification plate on the appliance or tool). We ...



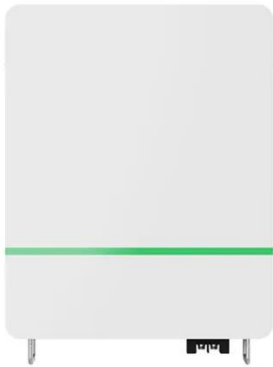
How To Size A Solar Inverter in 3 Easy Steps

What size solar inverter should you use for your system? In this guide we share how to correctly size a solar inverter in 3 steps.

What 24v inverter should i buy?

Dec 18, 2023 · Hoping someone's already done the hard work :) ive just received 8 304ah cells and a jk BMS (200a cont 350 peak) what 24v inverter

should i buy? 4.8kw is 200a is it as ...



Advice on selecting an inverter - Sinetech

When connecting the inverter to the battery use the thickest wire available, in the shortest length practical. NOTE: Cable size recommendations may vary among inverter brands and models; ...

What size inverter do you need for a 100ah ...

Oct 17, 2022 · The power usage and type of appliances you're trying to run on the inverter. The specs of your battery bank. In this article, I explain how these ...



Guide to inverters

A power inverter changes direct current (DC) power from a battery, usually 12V or 24V, into conventional mains alternating current (AC) power at 230V. This means that you can use one ...



Should I buy a 24v or 48v Inverter?

Jun 7, 2023 · Normally, 48V inverters are more efficient than 24V inverters, and 24V inverters are more efficient than 12V inverters. Before you make a purchase, please consult with PowMr ...



Inverter Size Calculator

Learn how to calculate the required size of an inverter with our in-depth guide. We provide a handy formula, examples, and answers to common questions to help you make the right ...

Contact Us

For catalog requests, pricing, or partnerships, please visit:
<https://www.wf-budownictwo.pl>