

## SolarGrid Energy Solutions

# What is the lighting voltage of tool lithium battery



## Overview

---

To understand how power tool batteries work, let's take a look inside. A typical battery contains individual cells and a circuit board that work together to power your tools.

Battery technology continues to evolve. As Eastman points out, even larger tools are migrating to battery power.

Battery voltage plays a large role in how well your tool performs, but what exactly is voltage, and how is it calculated?

What should you know about lithium ion batteries?

The most important key parameter you should know in lithium-ion batteries is the nominal voltage. The standard operating voltage of the lithium-ion battery system is called the nominal voltage. For lithium-ion batteries, the nominal voltage is approximately 3.7-volt per cell which is the average voltage during the discharge cycle.

Why should you use a lithium-ion battery voltage chart?

Using a lithium-ion battery voltage chart can help you determine the discharge chart for each battery and charge them safely. By measuring the voltage of your battery and comparing it to the chart, you can determine the state of charge of your battery and charge it accordingly.

What is a lithium ion battery voltage chart?

Lithium-ion battery voltage charts are a great way to understand your system and safely charge batteries. Lithium-ion batteries have a nominal voltage of 3.6V or 3.7V per cell. However, the working voltage of a lithium-ion battery can range from 2.5V to 4.2V per cell, depending on the chemistry and design of the battery.

How many volts should a lithium battery run?

Usage Range: Ideally, for optimal performance, lithium batteries should operate within a voltage range of 3.2 to 4.1 volts. Other specialized lithium batteries, such as lithium iron phosphate (LiFePO<sub>4</sub>), have different voltage parameters, typically around 3.2 volts nominal.

Which battery voltage is best for a cordless power tool?

A higher voltage indicates a stronger and more powerful battery. Common Battery Voltages for Cordless Power Tools Cordless power tools are available in different voltages, some of the most common of which include 12V, 18V, 20V, 24V, 36V, 40V and 60V. Low-voltage batteries are typically the cheapest.

Why should I use a lithium battery tester?

Using a lithium battery tester can help you regularly check the voltage levels of your batteries. Catching voltage drops early can prevent device shutdowns and extend battery life. Deep discharging (discharging below the recommended voltage range) can significantly shorten the life of your lithium battery.

## What is the lighting voltage of tool lithium battery

---



### Lithium Battery Voltage Chart: 3.2V, 3.7V, 4.2V ...

Jan 4, 2024 · A battery voltage chart is a critical tool for understanding how different lithium-ion batteries perform under specific conditions. It displays ...

### The mystery of 18650 lithium battery voltage change

Flashlights: provide strong light output for a long time to meet the needs of outdoor exploration or emergency lighting. Power tools: such as electric drills, electric screwdrivers, 18650 lithium ...



### Cordless Power Tools: Understanding Battery ...

Always check to ensure that you are using a battery with the right voltage rating for your cordless power tool. Some cordless powers have interchangeable ...

## What Is Lithium Cell Voltage?

## Explained Simply

Apr 15, 2025 · Learn what lithium cell voltage means, key ranges (Li-ion, LiFePO4), and how it impacts battery performance & safety.



## 12V Battery Voltage Chart: Understanding the ...

3 days ago · The 12V battery is a standard choice for powering various devices and systems. This article will explore the intricacies of 12V batteries, including ...

## What is Battery Nominal Voltage? Key Impacts ...

Jul 5, 2024 · The voltage value is critical in measuring how a battery will perform in a device and its expected battery lifespan over time. Example: Lithium-Ion ...



## Battery Voltage Chart: A Comprehensive Guide

Nov 7, 2024 · Battery voltage charts are important tools. They help monitor the health and performance of different types of batteries. Some commonly used

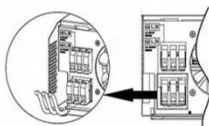
Parallel (Parallel operation up to 6 unit (only with battery connected))



AC input wires

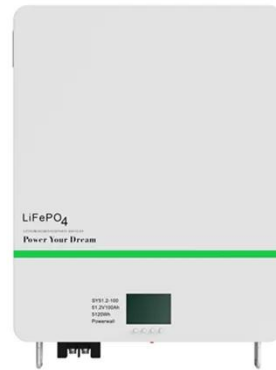


AC output wires



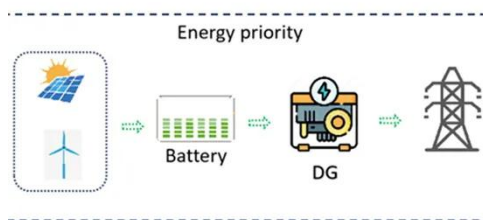
## Lithium Ion Battery Voltage Chart: A Comprehensive Guide

Jun 22, 2025 · A lithium-ion battery voltage chart is a useful tool for understanding the voltage and state of charge of a lithium-ion battery. The voltage chart shows the relationship between the ...



## LITHIUM BATTERIES 101

Apr 28, 2022 · Lithium 101 Introduction  
A brief history and overview of advanced battery chemistry: The first lithium-ion battery prototype Popular lithium (ion) cell types: What are ...



## Common Lithium-ion Battery Problems and How ...

Nov 15, 2018 · If the voltage is below 2V, the internal structure of lithium battery will be damaged, and the battery life will

be affected. Root cause 1: High self ...



## Understanding Power Tool Batteries - Which is ...

May 17, 2017 · Find the best cordless tool battery for your needs. Learn the pros and cons of Li-ion vs NiCd and tips to make your batteries last longer.

## Lithium LiFePO4 Battery Voltage Charts For 12V, ...

2 days ago ·  $C_{battery} = I_k \times t$  Since we have LiFePO4 batteries with different voltages (12V, 24V, 48V, 3.2V), we have prepared all 4 battery voltage charts ...



## Lithium-Ion Battery Cell Voltage: What You Need ...

May 20, 2025 · Unlock the essentials of lithium-ion battery cell voltage. Learn nominal voltage, voltage range, and how it affects performance.





## Understanding Lithium Battery Voltage

Mar 27, 2025 · Understanding lithium battery voltage is crucial for selecting the ideal power source for your devices. Lithium battery voltage influences its energy capacity, charging ...



## Lithium Battery Voltage Chart: Tips for Better ...

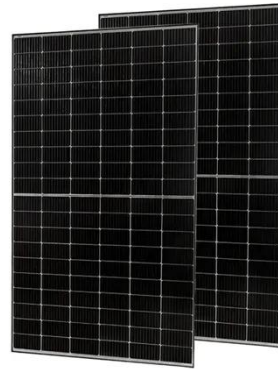
A lithium battery voltage chart is a valuable tool for ensuring safer operation and extending your battery's lifespan. By clearly mapping out the optimal voltage ...

## What Voltage Should I Charge A Lithium-Ion Battery? Safe ...

Mar 22, 2025 · Lithium-ion batteries typically charge to 4.20V per cell, with a tolerance of  $\pm 50\text{mV}$ . Nickel-based varieties usually charge to 4.10V per



cell. For high-capacity lithium-ion batteries, ...



## How to Test Lithium Ion Battery with Multimeter

Jan 31, 2025 · Learn how to test a lithium-ion battery using a multimeter for voltage, current, and overall health in simple steps.

## Power Tool Batteries: A Comprehensive Guide -- ...

Nov 18, 2024 · Power tool batteries have come a long way from bulky nickel-cadmium (NiCd) packs. Today, lithium-ion (Li-ion) technology dominates the ...



## How To Choose A Power Tool Battery?

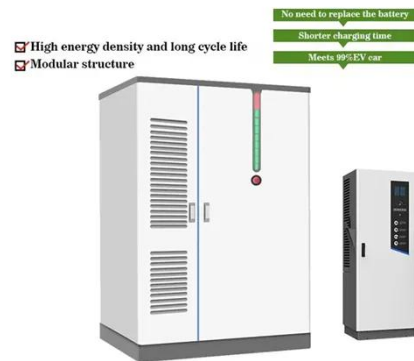
Aug 4, 2025 · There are many types of power tool batteries, with lithium-ion (Li-ion) batteries being the most common because of their high energy density,

long life and light weight. They ...



## Lithium Battery Voltage Chart: 3.2V, 3.7V, 4.2V ...

Jan 4, 2024 · What is a Battery Voltage Chart? A battery voltage chart is a critical tool for understanding how different lithium-ion batteries perform under specific ...



## Optimal Lithium Battery Charging: A Definitive ...

Mar 12, 2024 · Unlock the secrets of charging lithium battery packs correctly for optimal performance and longevity. Expert tips and techniques revealed in our ...

## Lithium ion battery capacity

3 days ago · What is the capacity of a lithium ion battery? Lithium ion battery capacity is the utmost quantity of energy the battery can store and discharge ...



- ✓ ALL IN ONE
- ✓ 100Kw/174Kwh High Capacity
- ✓ Intelligent Integration

## Power Tool Batteries: An In-Depth Guide

May 14, 2023 · Power tool batteries come in various sizes, capacity, voltage ratings, and chemistries to match the specific tool requirements. Lithium-ion ...

## Battery Voltage Explained: Nominal, Charged, Minimum, and ...

Feb 17, 2025 · When selecting a lithium-ion battery pack, understanding its voltage characteristics is crucial for ensuring optimal performance and longevity. Three key voltage terms define a ...



## 12V Battery Voltage Chart - Read Levels & State ...

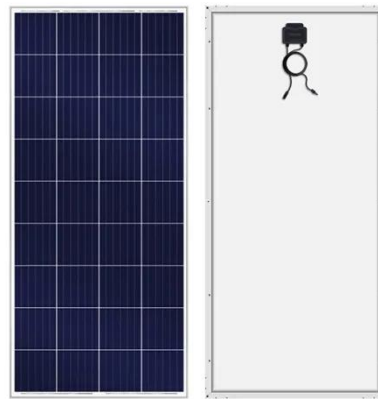
Feb 19, 2025 · Quickly check charge levels with our 12V Battery Voltage Chart for lithium, AGM, and lead-acid

batteries. Simple, clear, and accurate.



## Maximize Your Tool Performance with Our ...

Feb 9, 2023 · Li-ion batteries have a voltage range of 3.6 to 36 volts and are typically more expensive than NiCad batteries, but are also more efficient and ...



## Power Tool Batteries Explained: Pick up the right ...

Jan 23, 2019 · Li-ion, NiMH, NiCD, 18V, 1.3Ah, every one of these terms can get to be befuddling which is the reason we've explained power tool battery and ...

## Lithium Ion Battery Voltage Explained: ...

Dec 31, 2024 · For lithium-ion batteries, the nominal voltage is approximately 3.7-volt per cell which is the average voltage during the discharge cycle. The

...



## What Power Tool Batteries Are Interchangeable?

Sep 10, 2023 · There's a whole zoo of power tool batteries out there. You've got your Nickel Cadmium (NiCd), your Lithium-Ion (Li-ion), and let's not forget the ...

## The Relationship and Differences Between ...

Lithium-ion batteries are known for their efficiency, reliability, and widespread application. Voltage and current are two critical parameters for evaluating and ...



## Lithium Battery Voltage Guide: Types, Charging ...

Jan 27, 2024 · Lithium battery voltage impacts power and compatibility. This article covers Li-ion, LiPo, LiFePO4, and 18650 voltages, plus charging and ...



## Lithium Battery Voltage Chart

6 days ago · The voltage of lithium batteries typically ranges from 3.2 to 3.7 volts per cell, depending on the chemistry. The capacity, measured in milliampere ...



## Maximize Your Tool Performance with Our ...

Feb 9, 2023 · In-depth look at power tool voltage compatibility, including it types, what it means and why it's important, as well as a comprehensive chart ...

## Understanding Lithium Battery Voltage: Ranges, ...

Feb 16, 2025 · Usage Range: Ideally, for optimal performance, lithium batteries should operate within a voltage range of 3.2 to 4.1 volts. Other specialized ...



## The Complete Guide to Lithium-Ion Battery ...

Nov 14, 2023 · When working with lithium-ion batteries, you'll come across several voltage-related terms. Let's explain them: Nominal Voltage: This is the ...

## Understanding Lithium Battery Voltage

Mar 27, 2025 · This guide provides an in-depth comparison of the key voltage characteristics of popular lithium battery types, including lithium-ion, lithium polymer, lithium iron phosphate, and ...



## Contact Us

For catalog requests, pricing, or partnerships, please visit:  
<https://www.wf-budownictwo.pl>