

SolarGrid Energy Solutions

What is the generator set of a wind power station



Overview

In general, three types of generators are commonly used in wind turbines: Synchronous Generators, Asynchronous (Induction) Generators, and Direct Drive Generators. What is a wind turbine generator?

A Wind Turbine Generator is what makes your electricity by converting mechanical energy into electrical energy. Let's be clear here, they do not create energy or produce more electrical energy than the amount of mechanical energy being used to spin the rotor blades.

How do wind generators work?

Transmission: The electricity generated is then sent through cables to be used for power. There are primarily two types of wind generators, horizontal-axis wind turbines (HAWTs) and vertical-axis wind turbines (VAWTs). Each type has its own set of advantages and applications. These are the most common type of wind generators.

What types of generators are used in wind turbines?

In general, three types of generators are commonly used in wind turbines: Synchronous Generators, Asynchronous (Induction) Generators, and Direct Drive Generators. Synchronous Generators: Synchronous generators, or alternators, consist of a rotor that rotates synchronously with the frequency of the electrical grid.

How many types of wind turbine generators are there?

There are four types of wind turbine generators (WTGs) which can be considered for the various wind turbine systems, those are: Switched Reluctance Generators. Each of these generators can be run at fixed or variable speed. Due to the dynamic nature of wind power, it is ideal to operate the WTGs at variable speed.

How does a wind turbine generate electricity?

Ans: A wind turbine generates electricity by using the wind to turn its blades. The blades are connected to a rotor, which spins a generator inside the turbine. This movement converts kinetic energy from the wind into mechanical energy, which is then transformed into electrical energy by the generator. the long run.

What are the components of a wind turbine generator?

Another important component of a wind turbine generator is drive-train and gearbox. The drivetrain is the mechanical system that transfers the rotational energy from the rotor to the generator while gearbox regulates the speed, ensuring the generator receives the correct rotation rate to produce electricity efficiently.

What is the generator set of a wind power station



Schematic Diagram of Wind Turbine

Feb 3, 2024 · Diagram of Wind Turbine
Diagram of Wind Turbine A schematic diagram of a wind turbine provides a visual representation of its essential ...

Wind Turbine Generators: Working, Types, Parts

5 days ago · What is a Wind Turbine Generator? Simply put, a wind turbine generator is a device that converts the energy of the wind into electricity. It consists of large blades that spin when ...

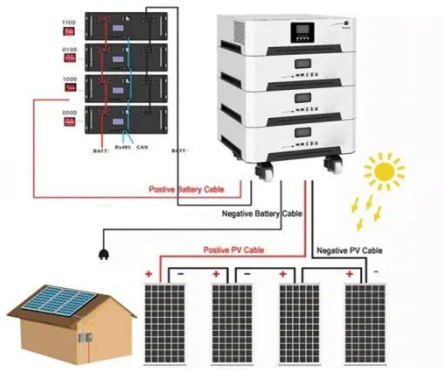


Generating Station

Oct 1, 2020 · What is a power generating station? Power generating station (i.e. power plants) is special plants with a set of components that have the ability to generate bulk electric power.

The Best Home Wind Turbines

Apr 1, 2022 · The best home wind turbine can independently generate power and reduce reliance on conventional energy sources. See which models made our ...



Wind Turbine Generator Types and Design for ...

Jan 11, 2023 · Wind Turbine Generator Types of Wind Turbine Generator A wind turbine is made up of two major components and having looked at one of ...

The Different Types of Generators in a Wind ...

Jul 27, 2023 · Explore the different types of generators used in modern wind turbines, their advantages, and how they impact overall turbine performance.



Wind Turbine Generators: Working, Types, Parts

5 days ago · Wind Turbine Generators - A Complete Guide: Understand how wind turbine generators operate, the types available, and the key parts that ensure

their effectiveness in ...



Wind Turbine Generator Types and Design for Wind Power

Jan 11, 2023 · There are two basic types of electrical generator and alternator for that matter: the permanent-magnet generator and the wound-field generator with both types consisting of two ...

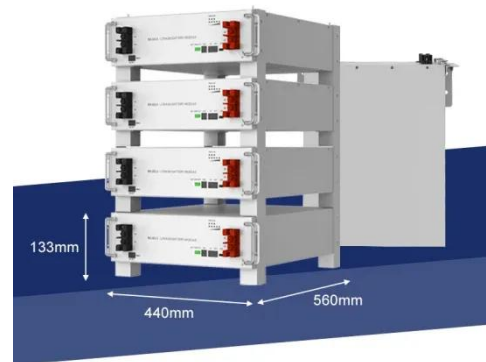


Wind power , Description, Renewable Energy, ...

Jul 17, 2025 · Wind power is a form of energy conversion in which turbines convert the kinetic energy of wind into mechanical or electrical energy that can ...

Wind turbine: what it is, parts and working , Enel ...

What is a wind turbine? A wind turbine, or wind generator or wind turbine generator, is a device that converts the kinetic energy of wind (a natural and ...



DETAILS AND PACKAGING



1 USER MANUAL PDF 2 RJ45 Cable For RS485/CAN 3 Battery in Parallel Cables
4 RJ45 TO USB Monitor Cable 5 M8 Terminal*4

Wind Power Generation

Wind power generation is the most widely used way to use wind energy in modern times. Wind power generation systems have shorter set-up time and can work continuously if the wind ...

Wind Power Plants in India

Aug 13, 2025 · Wind Power Plants has seen a phenomenal growth of around 33% CAGR in the last 5 years and the total capacity at end of 2010 was 11800 MW with most of the capacity ...



10 Best Wind Generator Kits to Harness Renewable Energy at ...

May 19, 2025 · If you're looking to harness renewable energy at home, exploring the best wind generator kits can be a game changer. These kits not

only help reduce your reliance on ...



13 Best Home Wind Turbines in 2025

Mar 29, 2020 · 4. Primus Wind Power 1-AR40-10-12 Air 40 Wind Turbine 12V by AIR40 by Primus Wind Power 5. GOWE 3KW Grid Tie Wind Turbine ...



Wind power generation: A review and a research agenda

May 1, 2019 · Wind power also plays an important role by reducing greenhouse gas emissions and thus attenuating global warming. Another contribution of wind power generation is that it ...

Wind Turbine Power Plants: Overview, Types

Jul 18, 2024 · A wind turbine power plant, also known as a wind farm or wind power plant, is a facility that generates electricity using wind turbines. Know ...



A Comprehensive Guide to Wind Farm ...

Nov 25, 2024 · Wind farm construction represents one of the most significant steps toward a cleaner and more sustainable energy future. These projects ...

The Wind Power

The Wind Power is a comprehensive database of detailed raw statistics on the rapidly growing sphere of wind energy and its supporting markets. It contains data about wind farms, turbines, ...



How Do Generators in Wind Turbines Work?

Apr 1, 2025 · At the heart of each wind turbine is the generator--a critical component responsible for converting mechanical energy into electrical



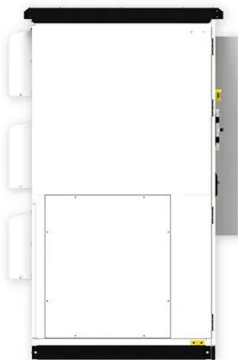
energy. This article aims to explain the ...

What Are Wind Generators? A Detailed Overview

Feb 15, 2025 · Wind generators, also known as wind turbines, are devices that convert the energy from wind into electrical energy. This process, known as ...



- ✓ 50KW/100KWH
- ✓ HIGHER POWER OUTPUT IN OFF-GRID MODE
- ✓ CONVENIENT OPERATION & MAINTENANCE
- ✓ PRE-WIRED

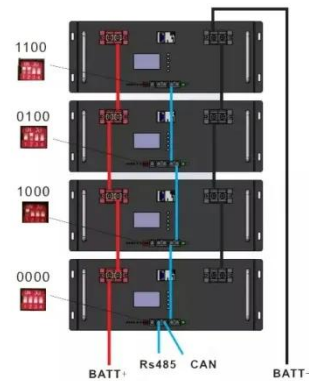


Explained: How Do Generators Work in Wind ...

Generators in wind turbines are integrated into the electrical grid through power electronics and control systems. These systems regulate the voltage and ...

Setting Up a Wind Power Plant: All You Need to Know

Discover how to set up a wind power plant in India with expert insights on site selection, installation, and challenges.



Generator

Apr 25, 2024 · The main components of a wind turbine generator include the rotor blades, rotor hub, nacelle, gearbox, generator, and tower. The rotor blades capture the wind and convert it ...

Step-by-Step Guide to Wind Turbine Installation

Nov 2, 2024 · Discover wind turbine installation steps, from site assessment to grid connection, and boost your energy game!



The wind energy fact sheet

Dec 10, 2010 · Contingency services are generally set to allow for failure of the largest power unit, which in NSW is a 660 megawatt coal fired power station. As or June 2010, there were only ...

Sample Order
UL/KC/CB/UN38.3/UL



What Does it Take to Install a Wind Turbine?

Feb 23, 2025 · Understanding Wind Turbines A wind turbine is a device that converts the kinetic energy of the wind into electrical energy. It consists of ...



Complete Guide to Wind Turbine Kits for Home ...

Jan 1, 2025 · Harness renewable energy with wind turbine kits! Our 2025 guide shows how to cut costs, reduce your carbon footprint, and achieve energy ...

Wind Power Generation and Modeling

Nov 9, 2023 · This chapter provides a reader with an understanding of fundamental concepts related to the modeling, simulation, and control of

wind power plants in bulk (large) power
...

Highvoltage Battery



Wind Power Plant

3 days ago · The generators are used in the wind power plant to convert the kinetic energy of wind into electrical energy. There is different generator used
...

Wind turbine: what it is, parts and working , Enel Green ...

Aug 3, 2023 · There are four types of wind turbine generators (WTGs) which can be considered for the various wind turbine systems, those are: Switched ...



✓ IP65/IP55 OUTDOOR CABINET

✓ ALUMINIUM

✓ OUTDOOR ENERGY STORAGE CABINET

✓ OUTDOOR MODULE CABINET

The Different Types of Generators in a Wind ...

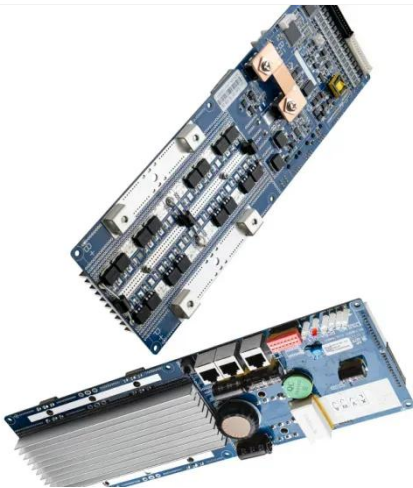
Jul 27, 2023 · In general, three types of generators are commonly used in wind turbines: Synchronous Generators, Asynchronous (Induction) Generators,

and ...



What is Wind Power Plant?

Nov 18, 2023 · Wind power plants are the infrastructure that consists of a collection of wind turbines & convert the kinetic energy into electrical energy.



Offgrid Power: Everything You Need to Know ...

Aug 26, 2022 · Offgrid power systems such as portable wind turbines allow people to generate power without being reliant on the traditional power grid. ...

Contact Us

For catalog requests, pricing, or partnerships, please visit:
<https://www.wf-budownictwo.pl>