

## SolarGrid Energy Solutions

# What is the current when the battery cabinet is charging



## Overview

---

As a general rule of thumb, the charging current should be  $\approx 10\%$  of the battery's Ah rating. Therefore, Charging Current for 120Ah Battery =  $120 \text{ Ah} \times (10 \div 100) = 12 \text{ Amperes}$ . What happens when a battery is fully charged?

At this stage, the battery voltage remains relatively constant, while the charging current continues to decrease. Charging Termination: The charging process is considered complete when the charging current drops to a specific predetermined value, often around 5% of the initial charging current.

Why is current important when charging a lithium ion battery?

When charging and discharging lithium-ion batteries, the current is an important factor to consider. The current flowing into the battery during the charging process determines how quickly the battery charges. A higher current means a faster charge time, while a lower current means a slower charge time.

What happens if you charge a lithium ion battery below voltage?

Going below this voltage can damage the battery. Charging Stages: Lithium-ion battery charging involves four stages: trickle charging (low-voltage pre-charging), constant current charging, constant voltage charging, and charging termination. Charging Current: This parameter represents the current delivered to the battery during charging.

When does a lithium ion battery charge end?

Charging Termination: The charging process is considered complete when the charging current drops to a specific predetermined value, often around 5% of the initial charging current. This point is commonly referred to as the "charging cut-off current." II. Key Parameters in Lithium-ion Battery Charging.

How does a battery charger work?

Operation: The charger allows the full current to flow until the battery reaches

its pre-set voltage, at which point the current decreases gradually. In practical terms, most charging processes start with a constant current stage to fill the battery quickly, then transition to a constant voltage stage to ensure safe and complete charging.

How to calculate battery charging time?

Below are the formulas for calculating the required battery charging time (in hours) and the necessary charging current (in amperes): Charging Time of Battery = Battery Ah ÷ Charging Current  $t = Ah \div A$  and Required Charging Current for battery = Battery Ah × 10% A = Ah × 10% Where: t = Time in hrs.

## What is the current when the battery cabinet is charging

---

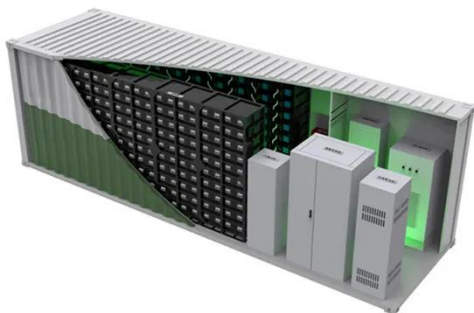


### How to Calculate Battery Charging Current and ...

Jun 20, 2024 · Calculating battery charging current and time is essential for optimizing battery life and performance. Typically, the charging current is set ...

### Battery Charging Stages & Battery Charging ...

Feb 22, 2024 · Battery charging is a process that involves multiple stages in order to ensure the longevity and safety of your battery. Although the number of ...



### What is battery cabinet

Sep 26, 2023 · A battery cabinet is a device used for storing and managing batteries, which can be used in various fields, such as power systems, ...

### Utility-scale battery energy storage system (BESS)

Mar 21, 2024 · Introduction Reference Architecture for utility-scale battery energy storage system (BESS) This documentation provides a Reference Architecture for power distribution and ...

**12.8V 200Ah**



## Key Components of DC Fast Charging Stations

Jul 16, 2024 · People new to the Electric Vehicle (EV) industry may find the DC fast charging ecosystem complex. Let's examine the equipment and utility infrastructure required for DC fast ...

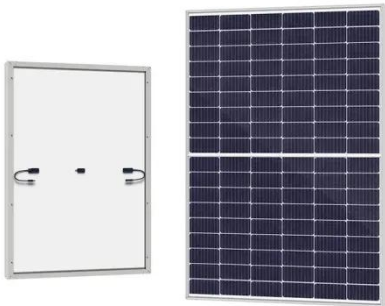
## Lithium-ion Battery Charging: Voltage & Current Explained

Nov 29, 2024 · Charging Current: This parameter represents the current delivered to the battery during charging. It decreases as the battery charges and approaches the termination point. ...



## Maximum charging current

Aug 2, 2023 · During charging, exceeding the maximum charging current of the batteries can withstand can lead to adverse reactions and may also cause ...



## Justrite Lithium Ion Battery Storage Charging ...

Jul 23, 2024 · About this item Helps Prevent Battery Fires - The Justrite Lithium Ion Battery Charger Cabinet boasts multiple shielding layers, an axial fan for ...



## What charging current should I use for a lead ...

Jul 14, 2016 · Customers often ask us about the ideal charging current for recharging our AGM sealed lead acid batteries. We have the answer: 25% of ...

## Lithium-ion Battery Cabinets - Storemasta

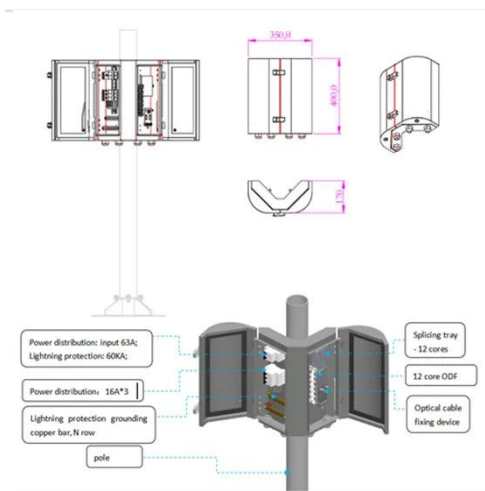
A battery cabinet is a particular type of storage cabinet that reduces the risks associated with lithium-ion batteries. These innovative cabinets create a safer

...



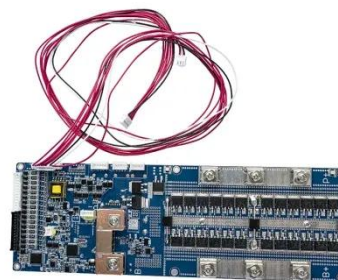
## Lithium-Ion Battery Cabinet , 12-Station ...

The 12 Station Lithium-ion Battery Charging & Storage Cabinet for Lithium-Ion batteries, durable design for indoor use. BUY DIRECT FROM THE ...



## UNDERSTANDING UPS SYSTEMS AND BATTERIES

Jul 17, 2024 · The three main subsystems of a Uninterruptible Power Supply (UPS) are: Rectifier/charger - Converts alternating current (ac) into direct current (dc) used to maintain ...



## What is a Battery Charging Cabinet? First time Buyer's guide

Jun 13, 2025 · A battery charging cabinet is a specially designed fire-resistant storage solution that safely charges and stores lithium-ion batteries while

protecting your business from thermal ...



## Battery Charging & Discharging: 10 Key ...

Mar 19, 2025 · Confused about battery performance? We break down 10 vital battery charging and discharging parameters. Optimize your battery life today!



## Charging current - calculation and related ...

Dec 25, 2022 · Charging current refers to the amount of current required to optimally charge a battery. Charging current depends on a few factors, which ...

## How rechargeable batteries, charging, and ...

May 31, 2025 · Rechargeable batteries work by reversing the chemical reaction that happens when they discharge and electricity flows backward in the battery.



## What is a Battery Charging Cabinet?

Aug 2, 2023 · We answer the question, 'What is a battery charging cabinet?' and explain why these safety cabinets are recommended for lithium-ion batteries.

## Battery Chargers and Charging Explained

Jun 14, 2025 · A quality battery charger is the foundation for long-lasting and reliable batteries. Chargers are frequently given minimal importance and are ...



## Lithium-Ion Battery Charging Cabinet: Safe, Compliant, and ...

Aug 15, 2025 · Discover the importance of a lithium-ion battery charging cabinet for safe storage, charging, and fire protection in workplaces. Learn about US

and EU regulations, safety ...



## Understanding Battery Charging Current Readings

Dec 4, 2024 · Initial High Current: When charging begins, the initial current might be high. This is normal for most lead-acid batteries that can accept a boost in current. Decreasing Current: As ...



## DC power supply cabinet working principle and ...

Oct 28, 2024 · The information detected by the temperature detection module, the single battery voltage detection module and the current and voltage output ...

## Guide: Maximum Charging Current & Voltage ...

Mar 3, 2023 · We use batteries in our daily life, so recharging the battery is what makes most of us confused. Charging your battery on a higher

voltage or ...



## Lithium Battery Charging Cabinet: The Essential Guide to ...

May 9, 2025 · The widespread use of lithium-ion batteries across various industries and applications--ranging from power tools to electric vehicles--has led to increasing concern ...

## Battery circuit current flow when charging o ...

Jan 6, 2023 · When an alternator charges a battery, the current flow is primarily parallel rather than series opposing, as both components are connected in ...



## What is a Battery Charging Cabinet?

Aug 29, 2024 · Conclusion Battery charging cabinets are crucial for safety. They safely store and charge lithium-ion batteries, prevent fires, explosions, and

leaks, keep batteries cool and dry, ...



## Battery Cabinet Solutions: Ensuring Safe Storage and Charging ...

Lithium-ion batteries are essential in powering tools, devices, and energy systems across industries, but they also come with inherent fire and explosion risks. To address these ...



## What Is the Normal Charging Current for a ...

Jan 2, 2025 · The normal charging current for a battery is defined as the rate at which it can be charged without causing damage or significantly shortening its ...

## Lithium-ion Battery Charging: Voltage & Current ...

Nov 29, 2024 · Learn how voltage and current change during lithium-ion battery charging, key parameters, charging stages, and best practices to

ensure ...



### Microsoft Word

Nov 15, 2017 · ESS EFC52 & EFC54 Series Front Terminal Battery Cabinets are shipped partially assembled, internally pre-wired and come standard with an over current breaker. The ...

### What Is Charge Current? Understanding Amps in ...

Mar 29, 2024 · Charge current refers to the flow of electric current, measured in amps, used to recharge a 12V battery safely and effectively. It dictates how ...



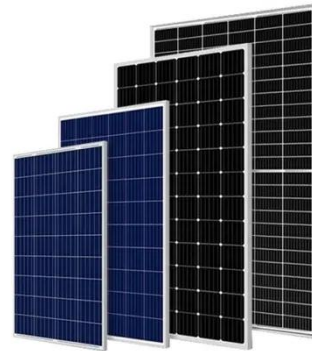
### Lithium-Ion Battery Current Variation During Charging And ...

This force is responsible for the flow of charge through the circuit, known as the electric current. Key Terms battery: A device that produces electricity by a ...



## What is the difference between constant current ...

Nov 19, 2024 · The difference between constant current (CC) and constant voltage (CV) stages in charging lies in how the charge is delivered to the ...



## What Is a Battery Charge and How Does It Work?

Dec 9, 2024 · What is battery charging? Battery charging adds electrical energy to a battery, allowing it to store energy for future use. A device known as a ...

## Battery cabinet charging and discharging principle diagram

Introduction to Battery Charging System and Methods Principles: Wireless charging uses electromagnetic fields to transfer energy from a charging pad to a

receiver coil in the device,



---

## Contact Us

For catalog requests, pricing, or partnerships, please visit:  
<https://www.wf-budownictwo.pl>