

## SolarGrid Energy Solutions

# What are the batteries for wireless communication base stations in Madrid



## Overview

---

Why do telecom base stations need a battery management system?

As the backbone of modern communications, telecom base stations demand a highly reliable and efficient power backup system. The application of Battery Management Systems in telecom backup batteries is a game-changing innovation that enhances safety, extends battery lifespan, improves operational efficiency, and ensures regulatory compliance.

Why do telecom base stations need backup batteries?

Backup batteries ensure that telecom base stations remain operational even during extended power outages. With increasing demand for reliable data connectivity and the critical nature of emergency communications, maintaining battery health is essential.

How does a telecom base station work?

Telecom base stations—integral nodes in wireless networks—rely heavily on uninterrupted power to maintain connectivity. To ensure continuous operation during power outages or grid fluctuations, telecom operators deploy robust backup battery systems.

Which battery is best for a telecom backup application?

**Flooded Lead-Acid Batteries:** Known for their cost-effectiveness and reliability, these batteries have been the traditional choice for telecom backup applications. They require periodic maintenance, including electrolyte level checks and terminal cleaning.

Are lithium ion batteries a good choice for a telecom backup system?

**Lithium-Ion Batteries:** Although more expensive upfront, lithium-ion batteries provide a higher energy density, longer lifespan, and deeper discharge capabilities. Their superior performance is driving increased adoption in modern telecom backup systems.

What is a battery management system (BMS)?

A BMS equalizes the charge among cells, enhancing overall performance and longevity. Protection: The system prevents overcharging, deep discharging, overheating, and short circuits. By triggering alarms or disconnecting problematic cells, a BMS minimizes the risk of battery failure and hazardous incidents.

## What are the batteries for wireless communication base stations in

---



### Energy-efficiency schemes for base stations in 5G ...

In today's 5G era, the energy efficiency (EE) of cellular base stations is crucial for sustainable communication. Recognizing this, Mobile Network Operators are actively prioritizing EE for ...

### Battery Management Systems for Telecom Base ...

Mar 17, 2025 · Backup batteries ensure that telecom base stations remain operational even during extended power outages. With increasing demand for ...



### The Role of Hybrid Energy Systems in Powering ...

Sep 13, 2024 · Powering telecom base stations has long been a critical challenge, especially in remote areas or regions with unreliable grid connections. ...

## Telecom battery backup systems

Mar 3, 2023 · Telecom battery backup systems mainly refer to communication energy storage products used for backup power supply of communication ...



## Telecom Tower And 5G Batteries

Sodium ion batteries serve as ideal backup power systems for telecom towers and 5G base stations, providing seamless transition during grid failures. Their ...

## Battery backup chemistries for 5G small-cell sites

Apr 14, 2022 · Differing battery chemistries offer more choices and performance levels. Selecting the right battery chemistry for each application is critical to ...



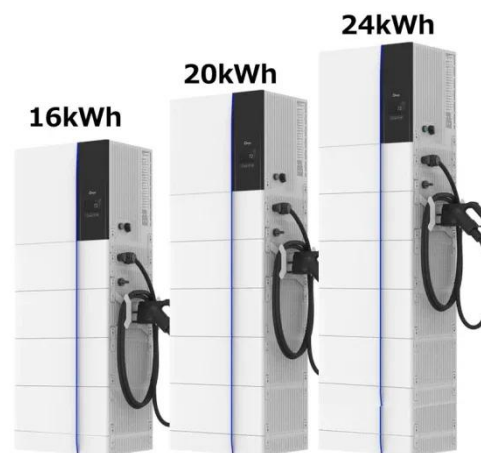
## The Base Station in Wireless Communications: ...

Aug 7, 2024 · Base station, also known as BTS (Base Transceiver Station), is a key device in wireless communication systems such as GSM. Equipped with ...



## Breaking Down Base Stations - A Guide to ...

May 31, 2022 · Wondering what telecom sites really look like? Find everything you need to know about telecom sites, towers, and their components.



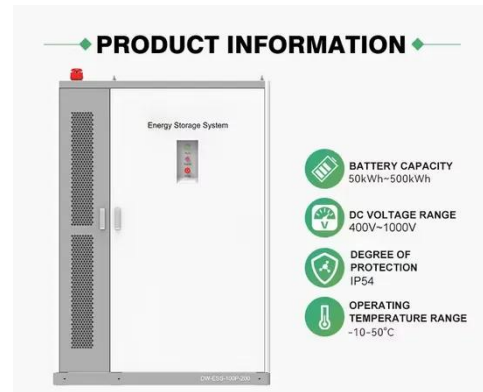
## Understanding Backup Battery Requirements for ...

Mar 7, 2025 · Telecom base stations require reliable backup power to ensure uninterrupted communication services. Selecting the right backup battery is ...

## Li-Ion Battery for 5G Base Station Report 2025-2033

Jul 28, 2025 · The Li-Ion Battery for 5G Base Station market is witnessing substantial growth due to the increasing deployment of 5G networks globally. Li-

Ion batteries are critical for providing ...

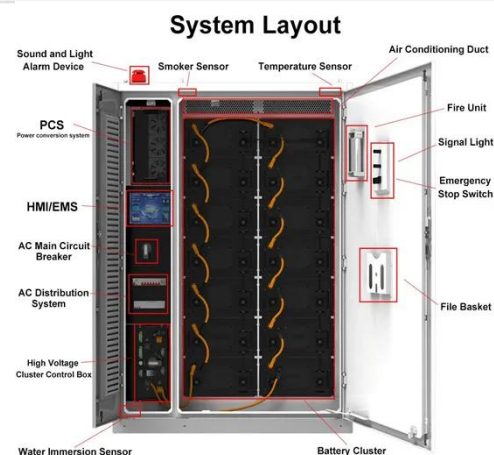


## What is the purpose of batteries at telecom base ...

Feb 10, 2025 · This paper discusses the role of telecom batteries in telecom base stations. Telecom batteries refer to batteries that are used as a backup power ...

## Telecom battery backup systems

Mar 3, 2023 · Telecom battery backup systems of communication base stations have high requirements on reliability and stability, so batteries are generally ...



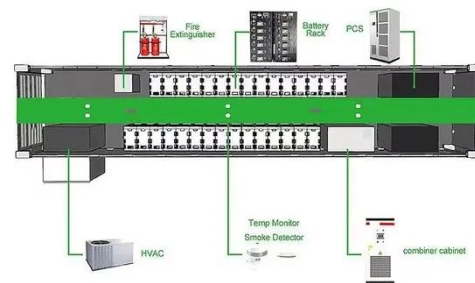
## 10

Aug 5, 2012 · Introduction The overall contribution of cellular network operators to the entire human CO<sub>2</sub> emissions is estimated at 2.5% in the US [1]. About 60% - 80% originates from ...



## 48V lifepo4 lithium battery telecommunication base stations wireless

Mar 22, 2025 · At the forefront of this transformation stands the 48V LiFePO<sub>4</sub> battery, a game-changing powerhouse that's redefining how we empower telecommunication base stations ...



## Energy-Efficient Base Stations , part of Green Communications

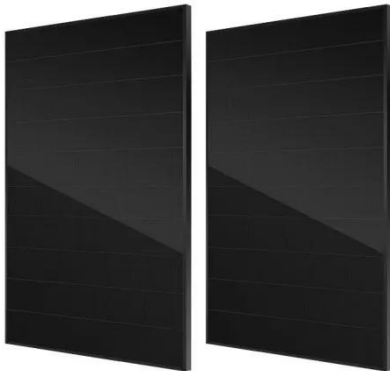
Aug 29, 2022 · With the explosion of mobile Internet applications and the subsequent exponential increase of wireless data traffic, the energy consumption of cellular networks has rapidly ...

## Elisa installs AI-based batteries in base stations

Elisa equipped nearly 100 base stations with new lithium batteries integrated



with an Artificial Intelligence (AI)-based energy management system in 2023. This system enables the base ...

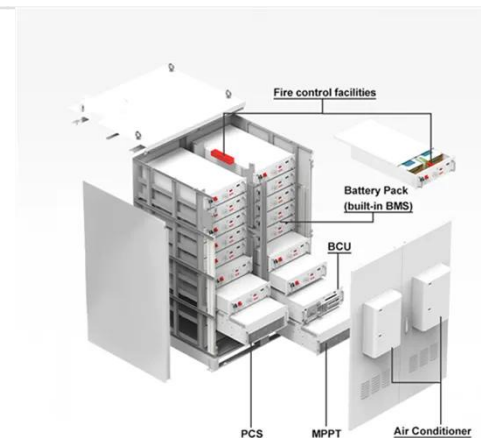


## Green Base Station Solutions and Technology

Mar 20, 2011 · Environmental protection is a global concern, and for telecom operators and equipment vendors worldwide, developing green, energy ...

## What Batteries Are Used in Telecom Towers?

Feb 13, 2024 · Telecom towers utilize various battery types to ensure uninterrupted service during power outages and fluctuations. The most ...



## Wireless Base Station

HAPs place wireless base stations on aircraft that can stay aloft for long periods to provide communication services. It uses existing communication technology and can communicate ...



## DETAILS AND PACKAGING

### Battery technology for communication base stations

In order to ensure the reliability of communication, 5G base stations are usually equipped with lithium iron phosphate cascade batteries with high energy density and high charge and ...



### BS (Base Station)

Mar 4, 2023 · A base station (BS) is a key component of modern wireless communication networks, providing the interface between wireless devices ...

### Site Energy Revolution: How Solar Energy ...

Nov 13, 2024 · Discover how solar energy is reshaping communication base stations by reducing energy costs, improving reliability, and boosting ...



48V 100Ah

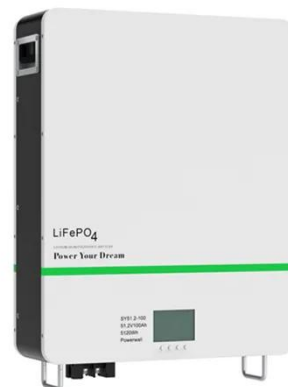


## The Base Station in Wireless Communications: The Key to ...

Aug 7, 2024 · Base stations are an essential element of wireless communication systems, enabling smooth and stable connections between users and the telecommunications network. ...

## UPS Batteries in Telecom Base Stations - leagend

Mar 17, 2025 · In today's always-connected world, telecom base stations are the backbone of communication networks, ensuring seamless connectivity for ...



## Telecom Battery Backup Systems, Backup Power ...

The voltage of this series of batteries is 48V, and it is suitable for the backup power supply of various communication

equipment, such as base stations, ...



## Essential Batteries Powering Cellular Towers

Apr 30, 2022 · Batteries in Cellular Base Station Towers A cellular base station tower shares signals with cellular devices that home in on it. It hosts several ...



## 48V lifepo4 lithium battery telecommunication ...

Aug 11, 2025 · Versatility is a hallmark of the 48V LiFePO4 battery. Its design allows for customizable solutions, ensuring an optimal fit for the unique ...



## Madrid Rail Maps and Stations from European ...

Madrid's two main railway stations are Camartin in northern Madrid and Atocha in the south of the city. The first situated on San Augustin de Foxa Street is the ...



## Base Station Definition

Sep 11, 2023 · A base station is a fixed wireless device that serves as a hub for other wireless devices and provides a bridge to another network. In a ...

## Battery Management Systems for Telecom Base ...

Mar 17, 2025 · Telecom base stations are strategically distributed across urban, suburban, and remote locations to provide uninterrupted wireless service. ...



## Contact Us

For catalog requests, pricing, or partnerships, please visit:  
<https://www.wf-budownictwo.pl>