

SolarGrid Energy Solutions

**The solar panel is farthest from
the inverter**



Overview

Ideally, solar panels should be as close to the inverter and charge controller as possible. In situations where the panels are roof-mounted, this typically translates to anywhere between 20 and 50 feet from a group of panels to the inverter. When it isn't possible to roof solar mount panels.

Two main factors affect how far away solar panels can be away from an inverter: 1. The thickness and insulation of your cabling 2. How much are you willing to spend To ensure that your solar panels are.

Knowing how far away solar panels can be from inverters is important when designing a solar system for anyone. If it isn't possible to mount your solar panels on a roof, but you have landed nearby with plenty.

Several signs might indicate that your solar panels are installed too far away from the inverter. Assuming you know that your solar panels themselves are in working condition, you can: 1. Check your solar inverter's lights and error codes 2. Monitor your solar meter 3. Review your electric bill Your inverter may have flashing lights that alert.

In a perfect world, solar panels could be placed any distance from inverters and work just fine. But unfortunately, the reality is that solar panels should be 20 to 50 feet from the inverter to reduce losses and improve the efficiency of the system as a whole. If it just isn't possible to meet that requirement for whatever reason, installing panels.

Solar panels can typically be located up to 150 feet from an inverter. The distance largely depends on the type of wire and its gauge. How far should solar panels be from inverter?

To minimize voltage drop, it is recommended to keep the distance within 30 feet (9 meters) between the solar panels and the inverter. However, a distance of 100 feet can still result in an acceptable voltage drop of 3% or less. Thicker cables can help mitigate the issues of resistance and voltage drop.

How does the distance between solar panels and the inverter affect efficiency?

The distance between panels and the inverter can impact system efficiency and output due to factors such as wire length, temperature, and energy loss during transport. For instance, the longer the wire connecting the solar panels to the battery or inverter, the more energy is lost in transport.

What happens if the distance between solar panels is too long?

If the distance is too long, it can cause a significant decrease in the voltage, meaning less electricity will reach the inverter from the solar panels. To minimize voltage drop, it is recommended to keep the distance within 30 feet (9 meters) between the solar panels and the inverter.

How to choose a solar inverter?

The inverter's distance from the meter can also play a role in the efficiency of the system. Using the right wire is essential. For instance, 10 gauge solar wire can be run for specific distances without significant power loss. The type of wire used for solar panels can influence both the efficiency and safety of the system.

How far should a solar panel inverter be from a guest house?

In conclusion, managing your solar panel inverter distance by storing the inverter and battery in a guest house and running the lines to the main panel over 100 feet is practical. This is true, provided the system is designed correctly.

Do solar panels need a solar inverter?

The distance between the solar panels and the inverter can have a significant impact on the system's efficiency. Ideally, the inverter should be installed close to the solar array to minimize voltage drop.

The solar panel is farthest from the inverter

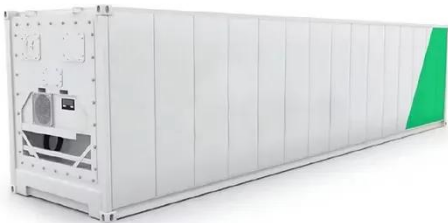
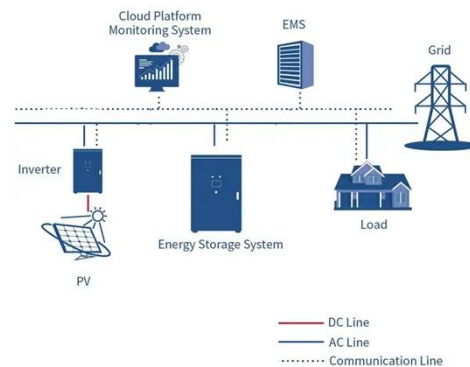


What Is an Inverter for Solar Panels and Why ...

Mar 28, 2025 · When considering solar energy for your home or business, understanding the solar inverter is key. This device converts the DC electricity ...

Optimizing Solar Panel Distance from Inverter - ...

Oct 30, 2023 · This guide covers factors affecting solar panel and inverter distance, wire types, efficiency implications, power loss, and practical ...

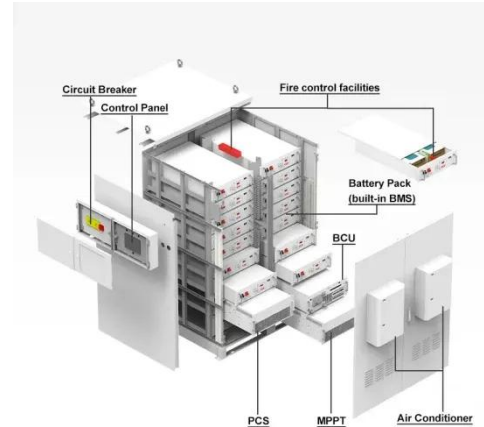


What Is a Solar Inverter? Detailed Explanation for ...

Feb 1, 2025 · Are you well aware of how the different components of a solar energy system work? Solar systems come with a solar inverter, PV panels, ...

How Far Can Solar Inverter be From Main Panel?

Jan 11, 2024 · Knowing the factors that determine how far apart the solar inverter and the main electrical panel can be is crucial for getting the most out of a ...



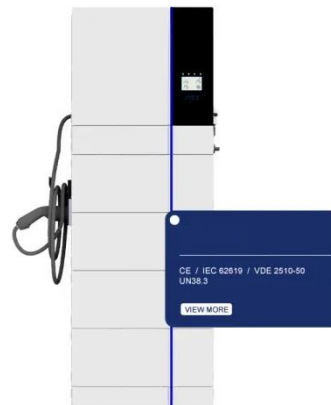
solar array over 200 feet from inverter -- northernarizona ...

Aug 18, 2025 · i have been debating weather to install panels on my roof or on the ground ---i have plenty of level land but will have to place the array over 200-250 feet from the inverter (if ...



How to Read Solar Inverter Specifications

Nov 17, 2023 · Solar inverter specifications include input and output specs highlighting voltage, power, efficiency, protection, and safety features.



How far can my solar array be from my house?

Your solar array can be placed anywhere on the property as long as it receives full sun and the solar panels are faced due south. If your well is next to the house



but an open patch of sun for ...

Analyzing the 2% DC voltage drop rule

Sep 30, 2020 · The good people at Mayfield Renewables take us deep into the technical weeds as they question a rule-of-thumb: Is the 2% DC voltage drop

...



Solar Panel Inverter Distance: How Far Can They Be from ...

2 days ago · When considering the solar panel inverter distance, one of the first things to remember is how far your inverter and battery are from the main electrical panel. For example, ...

Solar Panel vs Solar Inverter: Let's Break It Down!

May 2, 2024 · When it comes to solar energy, think of panels as sun collectors and inverters as power translators. Panels convert sunlight into electricity,

...



Connect Solar Panels To An Inverter: A Step-by ...

However, to truly harness the potential of solar energy, connecting the solar panels to an inverter is essential. The inverter serves as the heart of the solar ...

Step-by-Step Guide: How to Connect Solar ...

Learn how to connect solar panels to inverters using a simple and efficient diagram. Find step-by-step instructions and tips for a successful solar panel ...



Solar Integration: Inverters and Grid Services Basics

4 days ago · For instance, a network of small solar panels might designate one of its inverters to operate in grid-forming mode while the rest follow its lead, like

...



How Far Can Solar Panels Be From Inverter

Jul 11, 2023 · Final Thoughts on the Distance Between Solar Panels and Inverters In a perfect world, solar panels could be placed any distance from ...



Lithium Solar Generator: \$150



Analyzing the 2% DC Voltage Drop Rule -- ...

Aug 28, 2020 · The solar industry is often referred to as the "solar coaster" due to its seemingly constant changes as equipment manufacturers innovate, ...

How Far Can Solar Panels Be From the Inverter?

Jul 15, 2025 · When considering solar energy systems, a common question arises: "how far away can solar panels be from inverter?" Understanding this

distance is crucial for optimizing ...



How Far Can Solar Panels Be From An Inverter?

Sep 15, 2022 · An inverter should be installed as close to the solar panels as possible. The recommended distance is within 30 feet (9 meters). A shorter ...

Types of Solar Inverters (Pros & Cons)

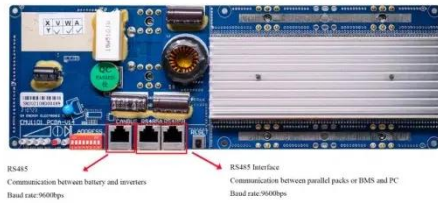
Feb 7, 2024 · Solar inverters are the operational brain of photovoltaic (PV) systems, making them one of the most important components of a solar ...



The best distance between solar panels and ...

Jul 30, 2025 · The best distance between solar panels and house The ideal distance between solar panels and a house can vary depending on the layout

...



A Guide to Solar Inverters: How They Work

Learn what a solar inverter is, how it works, how different types stack up, and how to choose which kind of inverter for your solar project.



How Far Between Solar Panels Should be Away ...

Jul 12, 2022 · Installing solar panels on the roof is a challenge. There must be enough space on the roof, but you also have to make sure there is enough ...

Distances from panels to inverter , DIY Solar Power Forum

Jul 18, 2023 · With high voltage dc used on modern solar systems the distance between panels and inverters can be quite far 100s feet possible. Inverters

and batteries should be close to the ...



Hybrid Solar Inverters: Pros, Types & More

Jul 28, 2025 · As solar energy becomes more mainstream, the demand for smarter, more versatile power solutions continues to rise. Hybrid solar inverters are at the heart of this ...

Solar Inverter system

Jan 6, 2025 · 1. Introduction to grid-connected solar inverter system 1.1 Composition and Function of PV System Photovoltaic system is a device that ...



How to Match Solar Panels to Inverter - A ...

Jun 1, 2024 · How to match solar panels to inverter - A comprehensive guide on selecting the right inverter for your solar panel array, ensuring efficient energy ...



Solar Panel Distance (Battery + Charge Controller + ...

Jul 15, 2025 · When determining how far away solar panels can be from the inverter, we must consider several factors, including voltage drop, cable size, and shading. Voltage drop occurs ...



All about Solar Inverters: How-To Selection ...

Aug 14, 2025 · If you're thinking about switching to solar energy, it's important to understand the role of a solar inverter. Simply put, without a solar inverter, the ...

Design and installation off-grid solar electrification system ...

May 9, 2025 · The SCC's current capacity in the energy system, which can be expressed in (4) and (5), is dependent upon the maximum power output of the

solar panels, the voltage of the ...



How Far Can Solar Panels Be from the Inverter? A Guide to ...

Aug 2, 2023 · Solar batteries also play an important role in managing the distance between the solar panels and the inverter. A 20-30 feet distance is generally ideal between the solar panels ...

Solar Inverters Types Explained: Choosing the ...

Dec 30, 2024 · Optimization: Advanced inverters optimize power production from solar panels. Investing in a good solar inverter enhances the overall ...



How far away can solar panels be from inverter?

Nov 21, 2023 · In summary, while there is no specific standard distance between solar panels and the inverter, it is

important to follow the cable length ...



How Far Away Can Solar Panels Be From Inverter?

Mar 9, 2025 · Ideally, solar panels should be as close to the inverter and charge controller as possible, typically within 100 feet from your home, backup battery system, and inverters. When ...



How Solar Inverters Work: Simple & Clear Guide ...

Jun 5, 2025 · Discover how solar inverters work in this simple guide. Learn about types, benefits, and how to buy best solar inverter for your home.

Guide to the Right Distance between Solar Panels and Battery

The distance between solar panels and battery can make or break a setup. Use these charts to properly configure your solar panel system.



Contact Us

For catalog requests, pricing, or partnerships, please visit:
<https://www.wf-budownictwo.pl>