

SolarGrid Energy Solutions

Majuro Communication Green Base Station Construction Unit



Overview

What is a green base station solution?

The green base station solution involves base station system architecture, base station form, power saving technologies, and application of green technologies. Using SDR-based architecture and distributed base stations is a different approach to traditional multiband multimode network construction.

What is the difference between micro base stations and macro base stations?

Meanwhile, the micro base stations are small, flexible in networking, and easy to deploy. It can make up for peripheral communications that cannot be covered by macro stations and improve communication quality and capacity. In this way, we take micro base stations and macro base stations as research objects.

Is 5G suitable for building large-scale macro base stations?

The 5G base station can be roughly divided into a macro base station, a micro base station, and a room subsystem according to the coverage range. The coverage capacity of 5G is much lower compared to 4G due to its high frequency. Thus, 5G is not suitable for building large-scale macro base stations (Zhou, 2017).

How much carbon does a micro/macro base station emit?

The results indicated that the carbon emissions of one micro/macro base station were 6.2 ± 0.4 and 30.2 ± 1.5 tons, respectively, subject to one-year operation time. At national level, the total carbon emissions were 17 ± 5 million metric tons (Mt) in 2020, and may increase to 145 ± 7 Mt by 2030.

What equipment does a micro base station use?

The AAU of the micro base station adopts the Remote Radio Unit (RRU) and antennas (Simic, 2007). Equipment parameters vary by manufacturers (Yu et al., 2021). Data from four manufacturers (see Table S2) were collected to

measure their uncertainty through Monte Carlo simulation.

What will China's base stations be like in 2021?

The construction of base stations in China has continued to grow rapidly since 2019. From 2021 to 2030, cumulative carbon emissions during the operational phase will be 710 ± 50 MtCO₂ e, and cumulative carbon emissions during the manufacturing phase will be 102 ± 5 MtCO₂ e, accounting for 87% and 13%, respectively.

Majuro Communication Green Base Station Construction Unit



Multi Base Stations to Multi Mobile Units: Green Communication ...

Apr 15, 2021 · A green communication scheme using anorthogonal wavefront (WF) multiplexing scheme spatially combined with orthogonal frequency-division multiplexing (OFDM) ...

Green and Sustainable Cellular Base Stations: An ...

Apr 9, 2019 · Energy efficiency and renewable energy are the main pillars of sustainability and environmental compatibility. This study presents an ...



Complete Guide to 5G Base Station ...

Nov 17, 2024 · Overview A typical communication base station combines a cabinet and a pole. The cabinet houses critical components like main base ...

Baseband Unit (BBU)

The baseband unit (BBU) is a crucial component in mobile base stations, handling tasks like signal processing, resource allocation, and protocol management to ensure efficient ...



Marshall Islands -

Oct 9, 2005 · The naval base at Majuro Atoll was established to support two Marine dive-bomber squadrons, half a patrol squadron, and temporary staging for one Army fighter group. In ...

Pacific Wrecks

Jun 26, 2025 · Built by the Japanese on Dalop Island in Majuro Atoll expanded by U.S. Navy into a major airfield during 1944-1945.



Marshall Islands

4 days ago · The building has a full UPS back-up system as well. A HF base is operational in Majuro and Ebeye, both are Icom IC-718's. The Majuro station (callsign V7AY65) is ...



Green Communications

Oct 30, 2023 · The main goal of designing green base stations is to save energy and reduce power consumption while guaranteeing user service and coverage and ensuring the base ...



LFP12V100



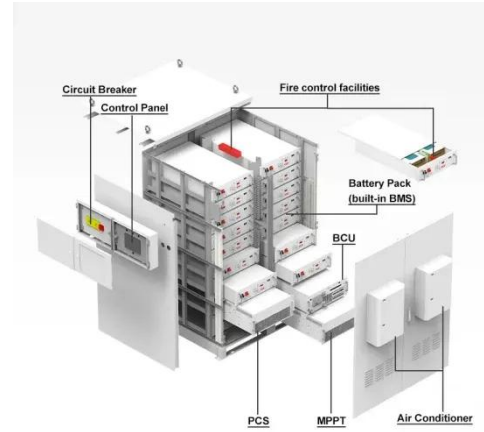
PRESS RELEASE: MEC Board of Directors ...

Aug 1, 2022 · Majuro, RMI --At a special meeting held on 22 June 2022, the Marshalls Energy Company (MEC) Board of Directors approved the ...

Simulation and Classification of Mobile Communication Base Station

Dec 16, 2020 · In recent years, with the rapid deployment of fifth-generation base stations, mobile communication

signals are becoming more and more complex. How to identify and classify ...



Marshall Islands -

Oct 9, 2005 · The assignment of additional units to the base and the increased scope of activity necessitated considerable expansion. Fourth Marine Air Wing headquarters and Marine Air ...

Types and Applications of Mobile ...

Oct 11, 2024 · Mobile communication base station is a form of radio station, which refers to a radio transceiver station that transmits information between mobile ...



Communication Base Station Renewable Integration

As global mobile data traffic surges 46% annually (Ericsson Mobility Report 2023), communication base stations now consume 3% of worldwide electricity.

How can we reconcile this exponential ...



What is RRU and BBU

Nov 20, 2024 · RRU and BBU are crucial components in base station construction, enabling a distributed architecture that improves efficiency.

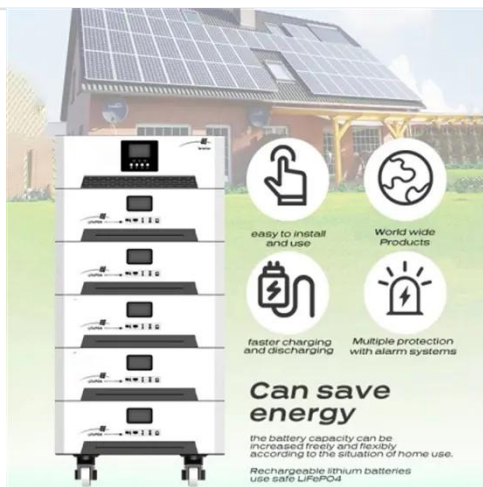


Communication Base Station Innovation Trends , Huijue ...

As global mobile data traffic surges 35% annually, communication base stations face unprecedented demands. Can traditional tower designs sustain hyper-connected smart cities ...

P9691 [GDCPC 2023] Base Station Construction

????????????????????(????????)? 1999 ???
 ??????,????????????????????????????????
 ?????????? ...



Communication Base Station Green Energy , Huijue Group E ...

As global telecom networks expand exponentially, how can communication base station green energy solutions address the sector's mounting carbon footprint? With over 7 million cellular ...

Naval Base Majuro

Naval Base Majuro was a major United States Navy base built on Majuro Atoll, in the Marshall Islands to support the World War II efforts in the Pacific War. The base was built after the ...



??? & ??dp? B

Jan 19, 2024 · ??:
 ?dp????????,????????????? ? f i
 ??????i??????,??i????????????????????????
 ?????????? ...



Export Preview , Digital Logistics Capacity ...

3 days ago · The Majuro station (callsign V7AY65) is operational between 07:00 and 21:00 or on 24/7 bases in case of an emergency. Currently all emergency ...



Green Base Station Solutions and Technology

Mar 20, 2011 · The green base station solution involves base station system architecture, base station form, power saving technologies, and application of ...

Loran Monitor Station Majuro

Jan 9, 2025 · Pictures: The below photos were retrieved from NARA U.S. Coast Guard District 14 Official Photos c./Sep 8, 1944 Typical Loran Monitor Station ...



The Applicability of Macro and Micro Base Stations for 5G Base Station

Oct 14, 2022 · The construction of the 5G network in the communication system can potentially change future life and is one of the most cutting-edge engineering fields today. The 5G base ...

Communication base station large solar energy ...

A mobile communication base station and cooling system technology, which is applied in the field of high-efficiency cooling system for outdoor mobile communication base station equipment, ...



What is Telecommunication Base Station , China ...

What is telecommunication base station, let's learn about communication base stations. China telecom equipment

supplier.

12V 10AH



Low-Carbon Sustainable Development of 5G Base Stations in ...

May 4, 2024 · The civil construction of 5G base stations is typically carried out using the existing infrastructure of 4G base stations, resulting in less material input during the construction phase.



✓ IP65/IP55 OUTDOOR CABINET

✓ ALUMINUM

✓ OUTDOOR ENERGY STORAGE CABINET

✓ OUTDOOR MODULE CABINET



Marshall Islands

4 days ago · The Majuro station (callsign V7AY65) is operational between 07:00 and 21:00 or on 24/7 bases in case of an emergency. Currently all emergency communication goes via the ...

P9691 [GDCPC2023] Base Station Construction

May 18, 2024 · · P9691 [GDCPC 2023] Base Station Construction (????????DP) · P2605 [ZJOI2010]???? ?? · ?????P2605

[ZJOI2010]???? ???? : C#??? ...



Breaking Down Base Stations - A Guide to ...

May 31, 2022 · Wondering what telecom sites really look like? Find everything you need to know about telecom sites, towers, and their components.

Carbon emissions and mitigation potentials of 5G base station ...

Jul 1, 2022 · However, a significant reduction of ca. 42.8% can be achieved by optimizing the power structure and base station layout strategy and reducing equipment power consumption. ...



Carbon emissions and mitigation potentials of 5G base station ...

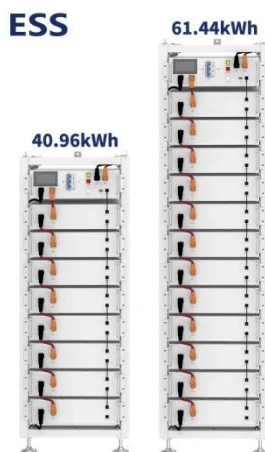
Jul 1, 2022 · Compared to traditional infrastructures, such as railways, highways, and airports, 'new'



infrastructure, such as fifth-generation (5G) base stations, has significantly enhanced ...

One article to understand the current development status of the 5G base

The communication base station is the core equipment of the mobile communication network. It is the core link that provides wireless coverage and signal transmission and reception, and can ...



A super base station based centralized network architecture for ...

Apr 1, 2015 · In future 5G mobile communication systems, a number of promising techniques have been proposed to support a three orders of magnitude higher network load compared to what ...

Introduction of base station and Remote Radio ...

Jul 22, 2022 · Base Station, generally refers to the "public mobile communication base station", (abbr.: BS), the base station is used to provide ...



Majuro Energy Storage Power Station Tender

The power station, with a 300MW system, is claimed to be the largest compressed air energy storage power station in the world, with highest efficiency and lowest unit cost as well.

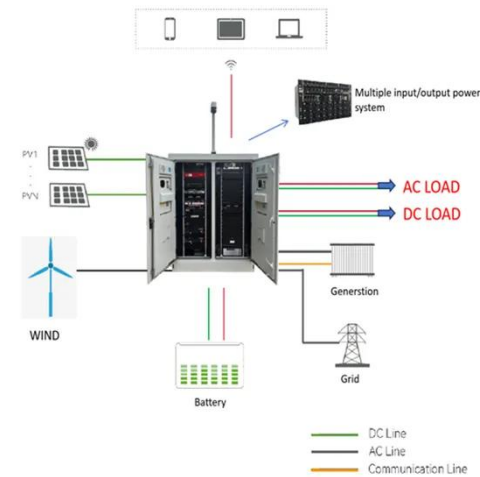
Future Green Mobile Communication Technology Facing ...

This paper studies the multi-base station mobile communication system powered by the combination of traditional power grid and green energy, and puts forward a non-cooperative ...



Multi Base Stations to Multi Mobile Units: Green Communication ...

Apr 15, 2021 · A green communication scheme using anorthogonal wavefront (WF) multiplexing scheme spatially combined with orthogonal frequency-



division multiplexing (OFDM) tec

Global 5G Base Station Industry Research Report ...

The 5G base station is the core device of the 5G network, providing wireless coverage and realizing wireless signal transmission between the wired ...



Contact Us

For catalog requests, pricing, or partnerships, please visit:
<https://www.wf-budownictwo.pl>