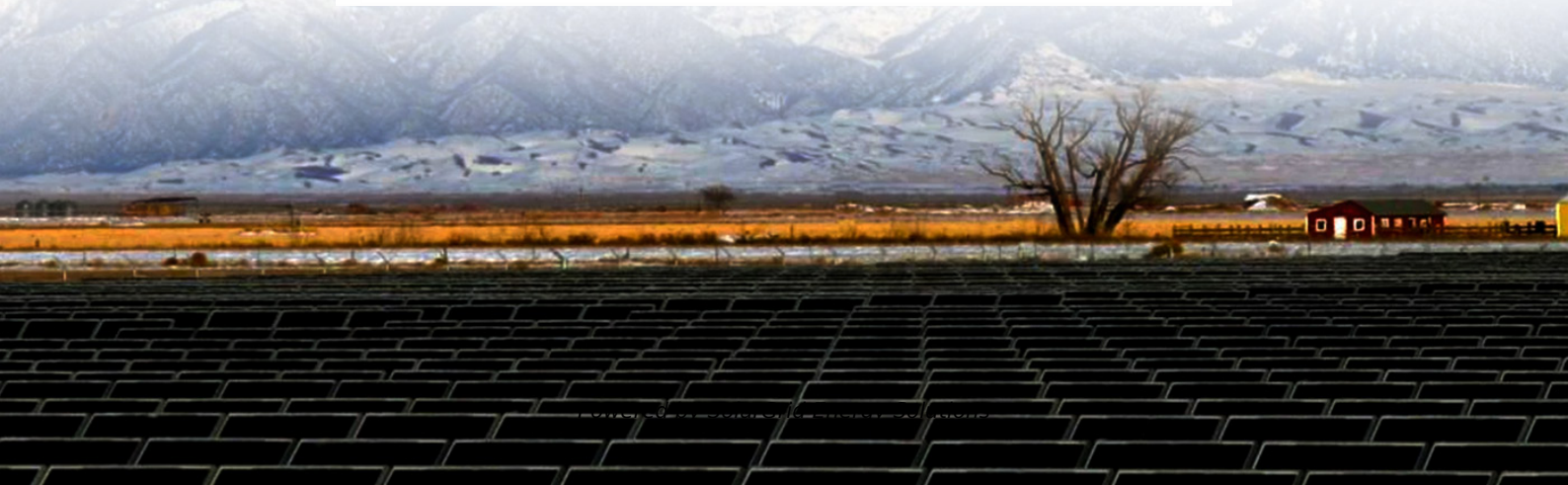


SolarGrid Energy Solutions

Is the uninterrupted power supply of a communication base station considered a building



Overview

Do base stations need a power supply?

Power supply: The base station requires a power supply to operate. It may be connected to the electrical grid or have a backup power source like batteries or generators in case of power outages. 7. Backhaul connection: The base station needs a backhaul connection to connect to the core network.

Do telecommunication towers contain Base Transceiver Stations (BTS)?

Abstract: Telecommunication towers for cell phone services contain Base Transceiver Stations (BTS). As the BTS systems require an uninterrupted supply of power, owing to their operational criticality, the demand for alternate power sources has increased in regions with unreliable and intermittent utility power.

Why are base stations important for modern telecommunications?

In summary, base stations are critical for modern telecommunications as they serve as the link between mobile devices and the extensive network infrastructure that spans the globe. The strategic deployment and ongoing improvement of these stations are essential for maintaining global connectivity.

How to choose a base station?

Frequency: The base station should operate on a frequency that is compatible with the devices it will be communicating with. Common frequencies include 900 MHz, 1.8GHz, 2.1GHz, 2.4 GHz, 2.6GHz and 5 GHz ,etc. 3. Power: The base station should have enough power to provide a strong and reliable signal.

Why do cellular networks need a base transceiver station?

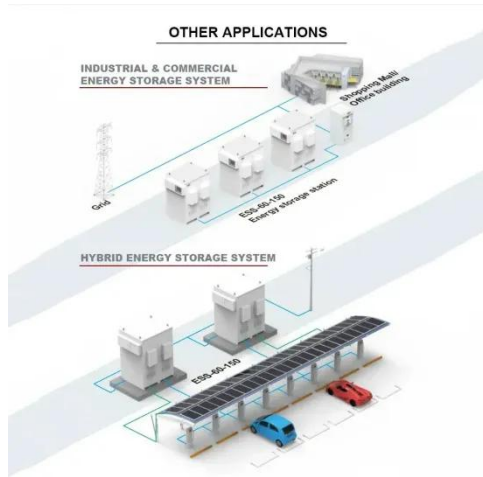
The widespread deployment of cellular networks has improved communication access, driving economic growth and enhancing social connections across

diverse regions. Base Transceiver Stations (BTSs), are foundational to mobile networks but are vulnerable to power failures, disrupting service delivery and causing user inconvenience.

What are the components of a base station?

A base station typically consists of the following components: 1. Transceiver: It is the main component of the base station that both transmits and receives signals. It converts the received signals into a format that can be understood by the base station and converts the outgoing signals into a format that can be transmitted over the air. 2.

Is the uninterrupted power supply of a communication base station



Uninterruptible Power Supply (UPS): Block ...

Feb 24, 2012 · An Uninterruptible Power Supply (UPS) is defined as a piece of electrical equipment which can be used as an immediate power source to the ...

The Role and Importance of Uninterrupted ...

Jun 24, 2025 · Explore the critical role of Uninterrupted Power Supply (UPS) systems in preserving power stability ?. Understand their design, function, ...



A Beginner's Guide to Understanding Telecom ...

Dec 27, 2024 · Telecom power supply systems are essential for ensuring uninterrupted communication, providing reliable energy to telecommunication ...

Article Detail

Aug 24, 2024 · This page has an error. You might just need to refresh it. First, would you give us some details? (We're reporting this as error ID:)



Understanding the Basics: What is a Base ...

Aug 19, 2024 · In today's digitally connected world, understanding the technology that makes communication possible is more important than ever. One key ...

Uninterruptible Power Supplies

Jan 1, 2024 · Uninterruptible power supply (UPS) systems are used to provide uninterrupted, reliable, and high-quality power for these sensitive loads. Applications of UPS systems include ...



Complete Guide to 5G Base Station ...

Nov 17, 2024 · Power Supply System. This acts as the "blood supply" of the base station, ensuring uninterrupted power. It includes: AC distribution box: ...

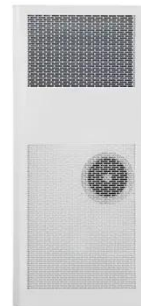
INTEGRATED DESIGN

EASY TO TRANSPORT AND INSTALL,
FLEXIBLE DEPLOYMENT



Understanding Backup Battery Requirements for ...

Mar 7, 2025 · Telecom base stations require reliable backup power to ensure uninterrupted communication services. Selecting the right backup battery is ...



Communication Base Station Backup Power ...

Nov 29, 2022 · Why LiFePO4 battery as a backup power supply for the communications industry? 1.The new requirements in the field of ...

Communication base station

Communication base stations are one of the core nodes of modern communication networks and require uninterrupted power supply to maintain

...

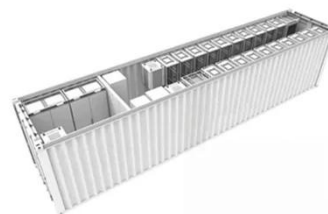


What Is A Base Station?

Apr 22, 2024 · Power supply: The base station requires a power supply to operate. It may be connected to the electrical grid or have a backup power source like batteries or generators in ...

Optimized Power System Planning for Base Transceiver Station ...

Nov 6, 2019 · Telecommunication towers for cell phone services contain Base Transceiver Stations (BTS). As the BTS systems require an uninterrupted supply of power, owing to



What is a base station?

Mar 4, 2021 · In telecommunications, a base station is a fixed transceiver that is the main communication point for one or more wireless mobile client devices.



Requirements for UPS Power Supply in Communication Base Stations

May 25, 2023 · The UPS power supply for base stations is an essential component of the entire communication power system. It is widely used in the communication industry due to its high ...



What is a base station? Basic building blocks of cellular

Jul 26, 2023 · Base stations serve as the foundational components of cellular networks, providing the essential infrastructure for seamless communication. They enable the transmission and ...

The role of UPS systems in 5G and 6G telecom networks

Jan 7, 2025 · UPS for telecoms infrastructure add an extra layer of

protection and reliability to ensure the backbone of the network system remains intact. By providing instant backup ...



Telecommunication base station system working principle ...

Jan 13, 2024 · The ESB-series outdoor base station system utilizes solar energy and diesel engines to achieve uninterrupted off grid power supply. Solar power generation is the use of ...

Liberty University

Study with Quizlet and memorize flashcards containing terms like Transport Layer services are implemented in what systems?, HFC downstream and upstream bandwidth is dedicated per ...



A review of renewable energy based power supply options ...

Jan 17, 2023 · Moreover, information related to growth of the telecom industry, telecom tower configurations and power supply needs, conventional



power supply options, and hybrid system
...

What is a base station and how are 4G/5G base ...

Aug 16, 2022 · Base station is a stationary trans-receiver that serves as the primary hub for connectivity of wireless device communication.

DETAILS AND PACKAGING



 LFP 280Ah C&I

What is the purpose of batteries at telecom base ...

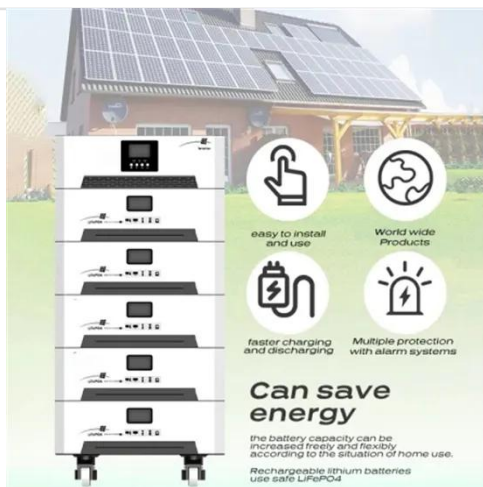
Feb 10, 2025 · Introduction Telecom base stations are the backbone of modern communication networks, enabling seamless connectivity for mobile ...

Building Uninterruptible Power Supply: The ...

Building Uninterruptible Power Supply A Building Uninterruptible Power Supply (UPS) is a crucial element for ensuring uninterrupted power and protecting ...

GRADE A BATTERY

LiFePO4 battery will not burn when overcharged, over discharged, overcurrent or short circuit and can withstand high temperatures without decomposition.



What is a base station? Basic building blocks of cellular

Jul 26, 2023 · Handover Management: When a mobile device moves from one cell to another, the base station handles the seamless transition, known as a handover. This ensures ...

What Is Uninterrupted Power And Why It Matters

Feb 28, 2025 · An Uninterruptible Power Supply (UPS) is a device that provides backup power to electrical equipment during power outages or fluctuations. It ...



BS (Base Station)

Mar 4, 2023 · A base station (BS) is a key component of modern wireless communication networks, providing the interface between wireless devices ...



Power Base Station

Base station power refers to the output power level of base stations, which is defined by specific maximum limits (24 dBm for Local Area base stations and 20 dBm for Home base stations) ...



Basic components of a 5G base station

The 5G base station is composed of a power supply system and communication equipment [4], in addition to some auxiliary equipment such as air ...



Energy storage system of communication base station

The Energy storage system of communication base station is a comprehensive solution designed for various critical infrastructure scenarios,

including communication base stations,
smart ...



Best UPS (Uninterruptible Power Supply) of 2024 ...

Dec 18, 2024 · The best UPS (Uninterruptible Power Supply) is essential for many businesses. Here's our pick of the best.

(PDF) Dispatching strategy of base station backup power supply

Apr 1, 2023 · With the mass construction of 5G base stations, the backup batteries of base stations remain idle for most of the time. It is necessary to explore these massive 5G base ...



Contact Us

For catalog requests, pricing, or partnerships, please visit:
<https://www.wf-budownictwo.pl>