

## SolarGrid Energy Solutions

# Inverter full power and peak power



## Overview

---

What is peak power in inverter?

Peak power is usually two to three times the rated power. The rated power is the power at which the inverter is stabilized over a long period, whereas the peak power is only used for short periods of high power demand. [Learn More: How does an inverter work](#) What causes the inverter to overload?

.

How big a power inverter is needed?

When determining how large a power inverter is needed, the difference between rated power and peak power must be distinguished. Peak power is also called peak surge power, which is the maximum power that can be maintained in a short period of time (usually within 20ms) when the power inverter starts.

How long does an inverter peak power last?

A: The peak power of an inverter generally only lasts for a few seconds, usually between 1 and 5 seconds, depending on the model and design. It is designed to cope with transient surges when an appliance starts, not for long periods. Understand the key differences between inverter peak power and rated power.

When can an inverter start?

Because these inductive loads require a large current to start at the moment of startup, the appliance can start normally only when the inverter peak power is greater than the starting power of the appliance. Under normal circumstances, the peak power is equal to 2 times the rated power. 2. Different types of load.

Can a 1000 watt inverter be rated as a peak power?

If the total energy consumption of your electrical equipment is 1000 watts, what you need is a power inverter with a rated power of 1000 watts or more, and an inverter with a peak power of 1000 watts and a rated power of 500 watts is not suitable in this case. Is peak power a tasteless parameter?

no.

How much power does a 500W inverter have?

For a 500W motor, the power impact is between 1500W and 3500W. Inverters generally have inverter peak value that is 2 times the rated power, that is to say, a 500W inverter has an instant power output of 1000W, and a 1000W has a peak output of 2000W. But on the other hand, it does not mean that all motors have 7 times the peak value.

## Inverter full power and peak power

---



### How to calculate or estimate power inverter's peak power

Oct 23, 2023 · What should be fine to consider as peak power output of an inverter when a motor starts for example? As a general rule, I figure that the peak is about three times the average. ...

### Inverter Basics and Selecting the Right Model

An inverter needs to supply two needs - Peak, or surge power, and the typical or usual power. Surge is the maximum power that the inverter can supply, ...



### The Only Inverter Size Chart You'll Ever Need

Sep 25, 2023 · We have created a comprehensive inverter size chart to help you select the correct inverter to power your appliances.



### Inverter Sizing 101: Finding the

## Perfect Fit for Your Solar Setup

To minimize overloading, use an inverter that meets your system's continuous and peak power requirements. To determine your continuous and peak power requirements, calculate the total ...



## Max inverter power questions

Apr 24, 2025 · The peak power rating is typically for indicating motor starting capability, this gives a sharp peak - typically 6-7 times the motor's power ...

## Understanding Inverter Power Ratings: kW vs ...

6 days ago · kW (kilowatts) measures real power--what actually powers your appliances. kVA (kilovolt-amps) measures apparent power--the total power ...



## Best 6000 Watt Inverters - Reviews & Buying ...

Jun 22, 2021 · Conclusion - Reviews & Buying Guide on 6000 Watts Inverter & Charger In short, I tried my best to find some of the best 6000 watts inverters. ...



## Solar Inverter Efficiency: Balancing Cost and ...

The efficiency of a solar inverter is critical, as it determines how effectively the inverter converts DC (Direct Current) power from the solar panels into AC ...



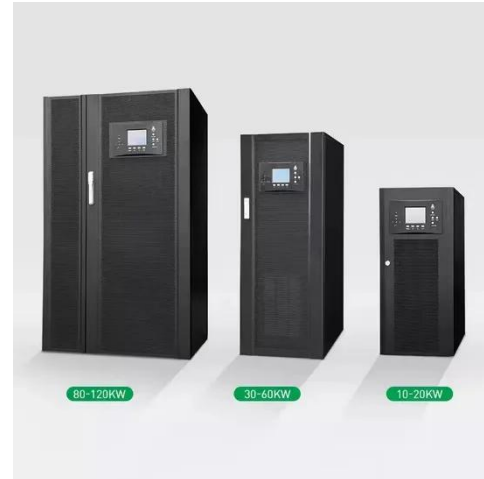
## Technical notes on output rating, operating temperature ...

May 15, 2018 · Inverters: When the power semiconductors and / or transformers reach a pre-set temperature, inverters will first show a temperature pre-warning, and if temperature increases ...

## What is the difference between continuous RMS vs. peak ...

Jan 22, 2018 · Power is the rate, per unit time, at which energy is transferred. The standard accepted unit of power is the

Watt. Power can be expressed in several ways. This discussion ...



### **Undersized inverter gives higher yield: how?**

Apr 30, 2025 · Why is the power of my inverter less than the peak power of the panels? Read why this happens and how to deal with it.

### **What Is an Inverter: Inverter Ratings, Efficiency**

Power inverters are one of the most important components in an independent energy system. Get all the information you need about inverters here.



### **What is the difference between continuous ...**

Peak output power is the wattage that an inverter can supply for a very short period of time when start. Continuous output power is the long term normal ...



## What Will An Inverter Run & For How Long?

Mar 3, 2023 · So I'm gonna explain to you guys in simple words about what you can run on your any size inverter and what are the key point to keep in mind. ...



## What is the Peak Output Power of a Power Inverter?

May 25, 2022 · In other words, the efficiency of the power inverter is the ratio of the input power to the output power of the inverter. An inverter takes in 1000W of DC current and outputs 900W ...



## Peak Power Inverters

Kind regards, Ken Morgan. Peak Power Inverters installed an inverter for me recently. They gave me excellent advice. The inverter they installed has made a



huge difference and it has ...



### **Inverter Peak Power vs Rated Power: What it is ...**

Apr 21, 2025 · When choosing an inverter, you often see two parameters: rated and peak power. But what do these numbers mean? And how do they affect ...

### **Difference between Max AC output power and Peak Power**

Jul 13, 2023 · Since the specification sheet for the inverter was not included in your post, this is a bit of a generic answer. Max AC output would typically refer to the maximum CONTINUOUS ...



### **What are the Peak Power and Continuous Power for Inverter?**

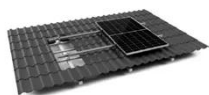
Sep 4, 2017 · The continuous power means the power that inverter generates in normal working condition. We guarantee that Meind power inverter

has the full power as rated. For example  
...



## Active/reactive power control of photovoltaic ...

Mar 12, 2018 · This paper proposes an analytical expression for the calculation of active and reactive power references of a grid-tied inverter, which limits the ...



TILE ROOF SOLAR MOUNTING SYATEM



STANDING SEAM ROOF SYATEM



ADJUSTABLE TILT FLAT ROOF SYATEM



TRIANGLE FLAT ROOF SYATEM

## Useful guide to inverter peak power and how to ...

Dec 17, 2023 · In this article, we will provide an overall introduction to inverter peak power, including what it is and how it's different on various kinds of load. ...

## What is the Difference Between Continuous Power and Peak Surge Power

Oct 26, 2012 · The difference between the continuous power rating and the peak surge power rating is pretty

straight forward. Continuous is the amount of constant power the inverter #

...



## Inverter Efficiency: Complete Guide and Calculator

Inverter Efficiency Calculation Formula  
There are 2 different formulas used to calculate inverter efficiency: European:  
This is a weighted number that ...

## What does the peak power of the power inverter mean and ...

Dec 11, 2020 · The starting power of some electrical appliances is several times the power required during normal operation, but it only lasts for a short time. The significance of peak ...



## Inverter peak power and inrush current

In this article, we take a look at what an inverter's peak power really means and how long your inverter can output it. We also take a look at the peak power ...



## The installed capacity and power of a solar system

If, say, a kettle is rated at 2kW that means it consumes 2kWh of electricity each hour. But if you install a solar PV station with 2kW installed (or peak) power it will not produce constant ...



## What is the solar panel peak power? Watt peak ...

May 13, 2015 · The nominal power is the maximum operating power at which a solar panel has been designed, although, at specific times, this power can be ...

## Full Bridge Inverter - Circuit, Operation, ...

3 days ago · What is a Full Bridge Inverter ? Full bridge inverter is a topology of H-bridge inverter used for converting DC power into AC power. The

...



## Peak power of Victron Inverters

Oct 13, 2024 · Peak power of Victron Inverters Hello. The datasheet of inverters specifies the peak power. How long does this peak last?



## Full Rated Power 2000w Pure Sine Wave Inverter Peak Power ...

Our Pure Sine Wave Inverter, offering 2000 watts of pure sine wave power, guarantees your devices run flawlessly.



## Inverter Specifications and Data Sheet

Jul 28, 2025 · Inverter peak power, also known as surge power, is the ability of an inverter to supply energy in a short period when several devices are turned

on. Joeyoung inverter ...



## Harnessing Peak Performance: The Ultimate Guide to 12kW Full-Power

Jul 28, 2025 · This comprehensive guide explores every facet of 12kW solar inverters--from core concepts and technical specifications to installation, maintenance, and real-world applications. ...

Lower cost  
larger system

20Kwh

30Kwh



Verified Supplier



## Full-Bridge Inverter Circuits , Tutorials on Electronics , Next ...

Aug 3, 2025 · 1.1 Basic Operation and Topology A full-bridge inverter is a power electronic circuit that converts DC to AC by strategically switching four power semiconductor devices (typically ...

## Inverter peak power and inrush current

In this article, we take a look at what an inverter's peak power really means as well as the inrush current of various

common appliances.



### What does the peak power of the power inverter mean and ...

Dec 11, 2020 · When determining how large a power inverter is needed, the difference between rated power and peak power must be distinguished. Peak power is also called peak surge ...

### Inverter Power Calculator & Formula Online Calculator Ultra

Oct 3, 2024 · Inverters are essential for converting DC (direct current) to AC (alternating current), enabling the use of household appliances, tools, and electronics with batteries or solar power ...



## Contact Us

For catalog requests, pricing, or partnerships, please visit:  
<https://www.wf-budownictwo.pl>