

## SolarGrid Energy Solutions

# Huawei voltage inverter parameters



## Overview

---

Does Huawei have a DC/AC Ratio limit on solar inverters?

ads in low-light conditions during the winter season. Huawei has designed the SUN2000 solar inverters such that they can operate in “clipping” mode for sustained periods of time. Therefore, Huawei will not pose firm limits on the DC/AC ratios on its inverters, provided that the design.

What is a large DC-to-AC ratio in a Huawei inverter?

er to such a setup as an “oversized installation”. In these cases, the so-called “DC-to-AC ratio” is larger than 1, or larger than 10 if you like to use percents rather than fractions. Huawei inverters are designed to automatically limit the maximum output power stated on their type plate, regardless of.

How do I set a running parameter for a sun2000 inverter?

Choose Monitoring > Inverter > Running Param., set running parameters, and click Submit. Before setting the running parameters of the SUN2000, ensure that the DC side of the SUN2000 is energized. Set this parameter based on the grid code of the country or region where the inverter is used and the inverter application scenario.

What if the inverter is connected to all parallel PV strings?

When the inverter is connected to all parallel PV strings (connected to each other in parallel outside the inverter), set this parameter to All PV strings connected. The standards of certain countries and regions require that the inverter must shut down after the communication is interrupted for a certain time.

What is a P-U curve in an inverter?

The standards of certain countries and regions require that the active power of the inverter be derated according to a certain slope when the output voltage exceeds a certain value. The standards of certain countries and

regions require that the P-U curve be set. This parameter is displayed when Voltage rise suppression is set to Enable.

What if a solar inverter has a high DC/AC ratio?

ing Huawei SUN2000 inverters with high DC/AC ratios When the total Watt-peak (Wp) power of the solar modules exceed the nominal AC power rating of the connected solar inverter, engineers typically refer to such a setup as an “oversized installation”. In these cases, the so-called “DC-to-AC ratio” is larger than 1, or larger than 10

## Huawei voltage inverter parameters

---



### Operations Related to the Special User

If you log in to the app as Special User, you can set grid parameters, protection parameters, feature parameters, and power adjustment parameters for the SUN2000.

### Setting PCS Parameters (213KTL-H0)

Before setting the running parameters of the Smart PCS, ensure that the DC side of the Smart PCS is powered on. The parameter list provided in this document includes all configurable ...



### SUN2000-100KTL-USH0 User Manual

SUN2000-100KTL-USH0 User Manual  
M:SUN2000-100KTL-USH0;HAV2;Smart  
PV inverter, Smart PV Controller,  
Cascading, Smart I-V Curve Diagnosis

### Setting Parameters over the App

This page provides instructions for setting parameters on Huawei devices using the app, ensuring optimal device configuration and functionality.



### 7.1.5.3 Setting Feature Parameters. Huawei SUN2000

High efficiency: The SUN2000SUN2000 inverter has a maximum efficiency of 98.6%, which means that it can convert more of your solar panels' output into usable electricity. Wide MPPT ...

### Setting Master SmartLogger Parameters

Aug 17, 2020 · Set solar inverter parameters, select the corresponding parameters, and click Batch configurations. In the dialog box that is displayed, select the target device and click ...



### Setting Smart Reactive Power Compensation Parameters

Aug 17, 2020 · This document describes the function, networking scenarios, and function realization of the FusionSolar

distributed reactive power compensation system.



## Setting Inverter Parameters

Choose Monitoring > Inverter > Running Param., set running parameters, and click Submit. Before setting the running parameters of the SUN2000, ensure that the DC side of the ...

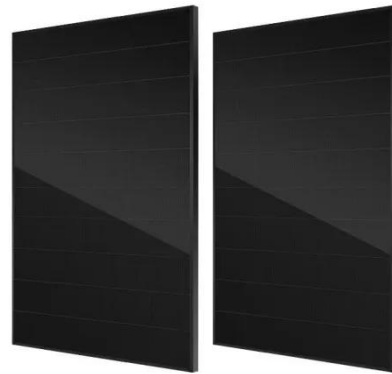


## Setting Meter Parameters

Aug 1, 2025 · SmartLogger3000 User Manual M:SmartLogger3000;Data logger, Grid dispatch, remote communication scheduling, environment monitoring, fast scheduling, feed-in at limited ...

## SUN2000-12-15-17-20-25K-MB0 Specs

Dec 15, 2017 · Learn more about the detailed model, parameter configuration, compatibility, environment, and product description of the SUN2000-12-15-17 ...



## Recommended Requirements for Inverter Application

In the PV system, the PV string configuration must meet the inverter configuration requirements for different inverters to achieve optimal energy yields. This configuration solution lists some ...

## Set Q-U and P-U through FusionSolar APP

Feb 1, 2022 · This document describes how to set the Q-U and P-U curve on the Huawei inverters with FusionSolar APP.



## Setting Voltage Rise Suppression Q-U Curve

Procedure Set voltage rise suppression Q-U curve parameters. Figure D-1 Setting voltage rise suppression Q-U curve

parameters



## Setting Reactive Power Control

In the Q-U characteristic curve control mode, the inverter or Smart PCS dynamically adjusts the ratio  $Q/S$  of output reactive power to apparent power in accordance with the ratio  $U/U_n$  (%) of ...



## Setting Power Meter Parameters

Setting DL/T645 Power Meter Parameters Procedure Log in as Advanced User or Special User, set access parameters, and click Add Devices.

## Feature Parameters

LVRT is short for low voltage ride-through. When the grid voltage is abnormally low for a short time, the inverter cannot disconnect from the power grid immediately and has to work



for some ...



### Using Huawei SUN2000 inverters with high /A ratios

Jan 14, 2025 · Using Huawei SUN2000 inverters with high DC/AC ratios  $r$  to such a setup as an "oversized installation". In these cases, the so-called "DC-to-AC ratio" is larger than 1, or larger ...

### Huawei photovoltaic inverter parameter configuration

Aug 29, 2024 · Full configuration scenario: For a single-phase solar inverter, the number of PV modules connected in series in a PV string cannot exceed 25 and the maximum power of a PV ...



### Setting Battery Control Parameters

SmartLogger3000 User Manual  
M:SmartLogger3000;Data logger, Grid dispatch, remote communication scheduling, environment monitoring, fast

scheduling, feed-in at limited current, ...



## Setting Slave SmartLogger Parameters

Aug 17, 2020 · Set solar inverter parameters, select the corresponding parameters, and click Batch configurations. In the dialog box that is displayed, select the target device and click ...



## Set

The parameter list provided in this document includes all configurable parameters that vary with the device model and grid code. The actual screen prevails. The parameters are for reference ...

## Setting Solar Inverter Parameters

This page provides guidance on setting parameters for Huawei's solar inverters, ensuring optimal performance and efficient energy management.



## Smart PV Controller Specs\_solar Inverter Specs

Check the specs of Huawei smart PV controller online. Take a quick look at Huawei solar inverter models, efficiency, input, output, safety instructions, and other inverter specifications and ...

## Detailed explanation of Huawei photovoltaic inverter ...

The Huawei inverters are tri-phased, as indicated by the '3W' on the datasheets; 1x of their inverter rated grid voltage in order to meet site-specific grid code requirements. accordingly.



## Recommended Requirements for Inverter Application

The voltage difference between different MPPTs is designed based on the electrical parameter  $V_{mpp}$  in STC of PV modules. For details about the voltage

difference configuration ...



## Inverter

The parameter list provided in this document includes all configurable parameters. Configurable parameters vary with the device model and grid code. The actual screen prevails. If you ...



## Parameter Setting Description

Mar 31, 2017 · The purchased products, services and features are stipulated by the contract made between Huawei and the customer. All or part of the products, services and features described ...

## DHSU1079-ZT Smart Power Sensor Quick Guide

May 14, 2025 · This quick guide provides instructions for the DHSU1079-ZT Smart Power Sensor, including installation, connections, and usage details.



---

### **Huawei Photovoltaic Grid-Connected Inverter Parameters: ...**

As global energy prices fluctuate, Huawei's grid-tied inverters have become the go-to solution for commercial installations, particularly after their Q1 2025 firmware update addressing dynamic ...



---

### **FusionSolar App and SUN2000 App Device Commissioning Guide**

Purpose This document describes how to use the FusionSolar app to set local device parameters, and provides answers to frequently asked questions (FAQs) and troubleshooting methods.



---

## **Contact Us**

For catalog requests, pricing, or partnerships, please visit:  
<https://www.wf-budownictwo.pl>