

## SolarGrid Energy Solutions

# How to connect the ground wire of the battery cabinet shelf



## Overview

---

How to ground a metal enclosure cabinet?

Moreover, it will include the hardware that you will use for grounding all the metallic components of the enclosure cabinet. The hardware may comprise of distinct ground sign sticker, which you need to place at every connection point. Often, you land the incoming ground onto a backpanel-installed grounding terminal, bar, or lug.

How do you ground an electrical enclosure?

Often, you land the incoming ground onto a backpanel-installed grounding terminal, bar, or lug. This connector links the ground conductor to enclosure backpanel. Backpanels are usually mounted using machine screws or nuts and star washers to make sure they are attached to the metal electrical enclosure. Electrical Enclosure Grounding.

What is a grounded electrical enclosure?

**Grounded Electrical Enclosure** The electrical system components are linked to the earth ground by a grounding bar within the electrical enclosure. In case an electrical fault happens, like ground fault or short circuit, the ground acts as safety feature guard against associated hazards.

How do you ground a control panel enclosure?

You should list all the electrical connector hardware used in control panel enclosure grounding. Some of the usual termination ways for ground wires include: **Grounding Lug:** The fitting features a compression section that receives the incoming cable. There is a hole enabling you to bolt it to an appropriate backpanel or enclosure stud.

Do electrical control panel enclosures need a fixed grounding system?

Manufacturers on occasions recommend “isolated ground.” Nevertheless, majority of electrical enclosures need not to feature their entirely independent

grounding system fixed. A correctly fixed star grounding system offers a safe and dependable electrical control panel enclosure installation.

Why is proper electrical enclosure grounding important?

Proper electrical enclosure grounding is a vital facet for providing safety, performance and uptime. However, it is always easy to overlook grounding aspects, or to fix them incorrectly. Often, the electrical enclosure will perform as usual with incorrect grounding, though will result in a danger if a fault happens.

## How to connect the ground wire of the battery cabinet shelf

---



### How to Run a Ground Wire to an Electrical Panel ...

Jan 6, 2025 · This article will tell you how to run a ground wire to an electrical panel & the importance of doing this task.

### How to Attach Wires to a Battery? (Full Process)

Oct 5, 2022 · How to Attach Wires to a Car Battery? Assuming you would like a blog post discussing how to connect wires to a car battery: Most cars have a ...



### How To Properly Ground Your Server Rack

Jun 2, 2023 · How To Ground a Server Rack To ground a server rack, you can find contractors who will provide a network grounding system. When properly ...

### Battery Ground Wires - Connected to Engine ...

Sep 17, 2021 · Car batteries are grounded to the body and chassis of the car, and the engine to use the car chassis and body as the return path for the circuits of ...



### **How To Ground A House Electrical System: A ...**

Oct 22, 2023 · Dig a hole (about 8 feet deep) and place the rod inside, leaving about 6 inches above ground level. Step 3: Connect the grounding wire. Using ...

### **Am I supposed to ground the inverter or the ...**

Jun 26, 2017 · I am setting up a solar system in a vehicle. I have 400W solar panels, a 12V battery bank, and a 2000W inverter. I've looked at the manuals ...



### **How to ground the energy storage cabinet**

cabinet, you need to ground the cabinet. As an industry best practice, we recommend groundin a complete bonding and grounding system. The



bonding wire is shown connecting the lid of the ...

## How to Properly Ground a Car Battery

Apr 4, 2025 · To properly ground a car battery, you need to securely connect the negative terminal to a clean, unpainted metal surface on the vehicle's chassis. Many car owners ...



## Why connect a ground cable from cabinet to door of cabinet?

Jun 22, 2020 · You would not expect a cabinet door to be able to shock you, but if it had plastic hinges or paint on the metal hinges, it may not be automatically grounded. Thus the wire ...

## Securely Connect Ground Wire to Car Battery: Safety Steps

Oct 15, 2024 · Learn the crucial steps to connect the ground wire to your car battery safely and efficiently. Discover the importance of protective gear,

proper handling techniques, and ...



## **A Guide to Grounds, Earth, and Grounding ...**

Jul 1, 2021 · Learn about the different types of earths and grounds, and how they apply to everyday electronic circuits.

## **Can the battery cabinet be installed with a ground wire**

The interior perimeter ground loop consists of a 2 AWG bare copper ground wire connected to the signal reference ground (SRG) at every interior ground bar. Metallic parts entering the ...



## **Grounding Essentials: Where to Connect Your Ground Wire**

Jun 8, 2025 · The Importance of Ground Wires Before diving into where to connect your ground wire, it's essential to understand what a ground wire is and

why it's critical for your electrical ...



## Earthing the battery cabinet

Jun 13, 2025 · Earth the battery management system during installation. Connect the supplied grounding cable to the battery cabinet grounding point (hexagon socket, AF13, torque: 8 Nm).

### OEM service

Hot Colors:



Color can be customized  
more questions just do not hesitate to contact us

LOGO Position: (Screen printing)



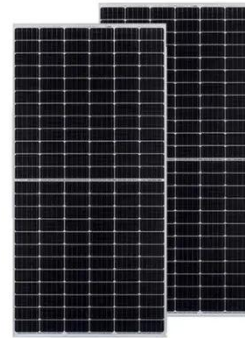
## How to Connect Ground Wires Together (Guide)

Jun 15, 2022 · Ground wires are part of supplying the electricity in your home. This guide shows you how to connect the ground wires together.

## importance of earthing a rack battery and its ...

Mar 18, 2023 · If you do connect, say the negative terminal of the battery to the case, and ground the case, you've now made a second electrical connection ...





## Connecting UPS Grounds and Neutrals , EC& M

Oct 1, 2002 · For multiple battery cabinets incorporating battery disconnects, the cabinets are bolted together, forming a single lineup with the UPS. The ...

## How to Properly Ground a Car Battery

Mar 9, 2023 · Ground Wire for Car Battery A ground wire for a car battery is an important component in the electrical system of any vehicle. It serves as a direct connection to the ...



## How To Connect Wires To A Battery Terminal

Feb 12, 2025 · Learn how to safely connect wires to a battery terminal with this step-by-step guide. Prevent short circuits and ensure a secure connection.



## Battery Cabinet

Feb 28, 2025 · Confirm that the charging source prior to connecting or disconnecting battery terminals has been disconnected or off line. Determine if battery is inadvertently grounded. If ...



## How To Ground Electrical Enclosure: The ...

Sep 23, 2021 · Often, you land the incoming ground onto a backpanel-installed grounding terminal, bar, or lug. This connector links the ground conductor to ...

## How to Ground an Electrical Panel: A Complete ...

May 29, 2025 · Learn how to ground an electrical panel step-by-step. Ensure safety, code compliance, and protect your home from electrical hazards.



### **No Place To Connect Ground Wire: Here Are A ...**

Dec 24, 2021 · Found yourself with no place to connect ground wire? Worry no further! I have the solutions for you in this article. Read to find out what they are!

### **Practice for good grounding and bonding a ...**

Jun 19, 2017 · Using a brass clamp commonly referred to as an acorn, connect the wire to the first ground rod, pulling the wire taut so no slack exists.

...



### **How to Connect Red and Black Wires to a Battery**

Feb 5, 2025 · Learn how to safely connect red and black wires to a battery with step-by-step instructions and expert tips for proper wiring.



## How to Safely Ground a Flammable Cabinet: Essential Steps

5 days ago · The wire can be wrapped around the rod or pipe and tightened using pliers or a wrench. Ground the Cabinet: Connect the other end of the grounding wire to the grounding ...



## Grounding a Justrite Safety Cabinet , Justrite

For exterior cabinet grounding, locate the safety cabinet's ground screw just below the green dot on the right hand side of the cabinet. Use a 5/16" (8 mm) ...

## How To Connect Ground Wire To Car Battery

Jul 2, 2023 · Make sure the car battery is disconnected before attempting to connect the ground wire. Locate the ground wire, which is typically black and

attached to the car's chassis or ...



### Where To Connect Ground Wire Of Car Battery: ...

Dec 10, 2024 · The ground wire of a car battery should be connected to an appropriate metallic chassis ground point, or in some cars, to an engine block ...

### Correctly Earthing a Metal Enclosure , Electronics Forum ...

Jul 25, 2013 · Hi, I wanted to know the correct procedure for main earthing an electronics project built in a metal case, I live in the UK with the standard 3 pin wire configuration for live, neutral ...



### Connecting the Ground Cable to the Cabinet/Rack

Use a Phillips screwdriver to secure the M6 lug of the ground cable to the ground point with an M6 screw. Tighten the M6 screw with a torque of 4.8 N m. After the

ground cable is connected, ...



---

## Contact Us

For catalog requests, pricing, or partnerships, please visit:  
<https://www.wf-budownictwo.pl>