

SolarGrid Energy Solutions

How much current does the base station battery have



How much current does the base station battery have



Battery Energy Storage Systems Report

Jan 18, 2025 · This information was prepared as an account of work sponsored by an agency of the U.S. Government. Neither the U.S. Government nor any agency thereof, nor any of their ...

How Much Current Does A Car Battery Have? Explained

Mar 24, 2025 · Your car's battery is the unsung hero of its electrical system, silently providing the crucial power needed to start your engine and keep everything running smoothly. But have ...



Power supply for base station.

May 13, 2022 · While this one is a bit more expensive than the one you looked at it does have ample current capacity to power your radio or a 50 watt model, many use this for 100 watt ...

Understanding 9V Battery Amps:

How Much ...

Mar 18, 2025 · This comprehensive guide will delve into the amperage of 9V batteries, explaining their importance and impact on battery performance and ...



12.8V 200Ah



How many currents Can a Battery Supply & How ...

Dec 8, 2022 · How much current a battery can supply is limited by the internal resistance of the battery. The higher the internal resistance, the lower the ...

What Are the Critical Aspects of Telecom Base Station Backup Batteries?

Mar 16, 2025 · Telecom base station backup batteries are essential for ensuring uninterrupted communication by providing reliable, long-lasting power during outages. Critical aspects ...

Our Lifepo4 batteries can beconnected in parallels and in series for larger capacity and voltage.



Base Power Battery Specifications , Compare ...

5 days ago · Compare Base Power's home battery systems - from our streamlined 20kWh wall-mount to our

advanced 50kWh ground-mount ...

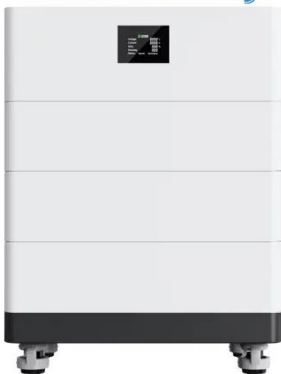


Relationship between base station battery capacity and current

Why do cellular base stations have backup batteries? Abstract: Cellular base stations (BSs) are equipped with backup batteries to obtain the uninterruptible power supply (UPS) and maintain ...



High Voltage Solar Battery



How the Base battery works: A complete guide ...

5 days ago · Learn how Base's home battery system works, from grid connectivity to outage protection. Discover how our intelligent software optimizes your ...

Choosing a 12V Battery for Your Mobile Base Station

While any 12V car battery might technically power your mobile base station, selecting the right battery for optimal performance and longevity

requires understanding a few key factors.



Base station battery output current

In this mode, power is supplied to the base station giving priority to solar and battery power, but also adding commercial power. The figure shows operation using almost no commercial ...

how much battery capacity does a base station usually have ...

Cellular base stations (BSs) are equipped with backup batteries to obtain the uninterruptible power supply (UPS) and maintain the power supply reliability. While maintaining the reliability, ...



How to Determine the Right Battery Capacity for Telecom Base Stations

Mar 10, 2025 · Battery Voltage: Select the correct voltage based on system design. Efficiency & Discharge Rate: Consider battery efficiency and

discharge characteristics. Formula:
Capacity ...



23 Ring Base Station Common Questions ...

Apr 17, 2024 · Follow the in-app instructions and prompts to complete the setup How Long Does It Take for Ring Base Station to Update? How long it takes ...



5g Base Station Market Size & Share Analysis

Jul 8, 2025 · The 5G Base Station Market is expected to reach USD 37.44 billion in 2025 and grow at a CAGR of 28.67% to reach USD 132.06 billion by 2030. ...

How Much Current Does A Car Battery Produce? Explained

Jul 21, 2025 · A car battery's current output is influenced by several factors, including its size, age, and the demands placed upon it. This blog post delves into

the intricacies of car battery ...



LPR Series 19' Rack Mounted



How to Calculate the Required Battery Capacity

Jan 14, 2025 · Portable power stations have become indispensable tools for outdoor activities, home backup, and emergency situations due to their portability and versatility. However, with a ...

Optimal Electricity Dispatch for Base Stations with Battery ...

Jul 11, 2022 · With the development of newer communication technology, considering the higher electricity consumption and denser physical distribution, the base stations become



What is the purpose of batteries at telecom base ...

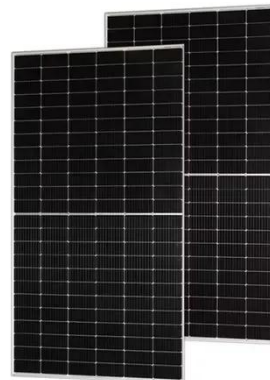
Feb 10, 2025 · The lead storage battery is the most widely used energy storage battery in the current communication



power supply. Among the many types of ...

How much current does the energy storage battery have?

Jul 17, 2024 · The amount of current stored in energy storage batteries is not a straightforward figure due to the complex interactions between battery chemistry, design, and intended ...



Understanding Backup Battery Requirements for ...

Mar 7, 2025 · Telecom base stations require reliable backup power to ensure uninterrupted communication services. Selecting the right backup battery is ...

What is a base station energy storage battery? , NenPower

Mar 7, 2024 · A base station energy storage battery is a crucial component of telecommunication infrastructure, designed to improve the efficiency and

reliability of network operations. 1.
These ...



batteries

Jan 29, 2018 · 6 suppose a 9v battery is connected to a load which draws 2 amps of current. so how does the battery determines that load requires this much current ? I mean if the battery ...

How Does a Portable Power Station Work?

May 16, 2025 · Discover how a portable power station works, including its power sources, features, and why it's perfect for emergencies.



Base station battery output current

How does a solar base station work? In this mode, power is supplied to the base station giving priority to solar and battery power, but also adding commercial power. The figure shows ...



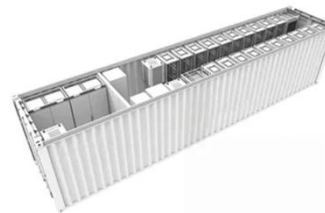
Grid-Scale Battery Storage: Frequently Asked Questions

Jul 11, 2023 · What is grid-scale battery storage? Battery storage is a technology that enables power system operators and utilities to store energy for later use. A battery energy storage ...



 **TAX FREE**

**1-3MWh
BESS**



Relationship between base station battery capacity and current

What is the traditional configuration method of a base station battery? The traditional configuration method of a base station battery comprehensively considers the importance of the 5G base ...

What Size Battery for Base Station? , Huijue Group E-Site

Recent GSMA data reveals that 23% of network outages stem from improper battery sizing, costing operators \$4.7

billion annually. Let's dissect this technical tightrope walk. The 2023 ...



Battery Capacity Calculator

If we want to calculate how much energy - in other words, how many watt-hours - is stored in a battery, we need information about the electric charge in the ...

How about base station energy storage batteries ...

Apr 7, 2024 · Base station energy storage batteries play a critical role in enhancing efficiency and reliability in telecommunication networks. Their ...



?Base Station (Gen 3) Installation Guide , SimpliSafe Support ...

Overview The Base Station is the brains of your system. It sends alarm signals to the monitoring center* with built-in cellular and Wi-Fi connections, a battery

backup that lasts up to 24 hours, ...



?Changing batteries in base station , SimpliSafe Support Home

Aug 16, 2020 · Changing batteries in base station Is there a manual, with photos or step by step instructions, showing how to replace the battery in the base station? I had a power outage and ...



Contact Us

For catalog requests, pricing, or partnerships, please visit:
<https://www.wf-budownictwo.pl>