

SolarGrid Energy Solutions

How many strings of 48v08ah lithium battery pack



Overview

Whenever possible, using a single string of lithium cells is usually the preferred configuration for a lithium ion battery pack as it is the lowest cost and simplest. How many lithium batteries can be connected in series?

Lithium battery pack 48V20AH generally single lithium battery is 3.5V, so 48V lithium battery pack needs $48/3.5=13.7$, just take 14 in series. If the manufacturer has provided a set of 12V lithium batteries, then 4 can be connected in series. As long as the output voltage is 48V, the current is 2A or 4A.

How many cells are in a set of lithium iron phosphate batteries?

The whole set of batteries is 14 strings multiplied by 10 cells = 140 cells. Summary: Series and parallel have their own advantages for lithium iron phosphate batteries. Series and parallel lithium battery packs have different methods and achieve different goals.

How many strings should a lithium battery have?

Therefore, the lithium battery must also be about 58v, so it must be 14 strings to 58.8v, 14 times 4.2, and the iron-lithium full charge is about 3.4v, it must be four strings of 12v, 48v must be 16 strings, and so on, 60v There must be 20 strings in parallel with the same model and the same capacity.

Can a lithium ion battery pack have multiple strings?

Whenever possible, using a single string of lithium cells is usually the preferred configuration for a lithium ion battery pack as it is the lowest cost and simplest. However, sometimes it may be necessary to use multiple strings of cells. Here are a few reasons that parallel strings may be necessary:.

What are the different types of lithium battery packs?

Lithium battery series and parallel: There are both parallel and series combinations in the middle of the battery pack, which increases the voltage

and increases the capacity. Such as 4000mAh, 6000mAh, 8000mAh, 5Ah, 10Ah, 20Ah, 30Ah, 50Ah, 100Ah and so on. Take 48V 20Ah lithium battery pack as an example Lithium Battery PACK.

How many volts are in a battery pack?

If each cell is 10 amp hours and 3.3 volts, the battery pack above would be 10 amp hours and 26.4 volts (3.3 volts x 8 cells). For this setup, a BMS capable of monitoring 8 cells in series is necessary. Lithium cells can almost always be paralleled directly together to essentially create a larger cell.

How many strings of 48v08ah lithium battery pack



48 How many strings of lithium iron phosphate batteries

How many strings should a lithium battery have? Therefore, the lithium battery must also be about 58v, so it must be 14 strings to 58.8v, 14 times 4.2, and the iron-lithium full charge is about ...

How to Choose the Right Ah for 48V Li-ion Battery Pack?

Apr 27, 2025 · Struggling to choose the right Ah for your 48V Li-ion battery pack? This in-depth guide covers everything you need to make the best choice. Find out more now!



How to Calculate the Number of Lithium ...

3 days ago · When to Connect Lithium Batteries in Series or Parallel? We all know that the series voltage of lithium batteries increases and the parallel ...

How many strings of lithium iron

phosphate battery ...

Here are some of the most notable drawbacks of lithium iron phosphate batteries and how the EV industry is working to address them. Shorter range: LFP batteries have less energy density ...



- LiFePO₄
- Wide temp: -20°C to 55°C
- Easy to expand
- Floor mount&wall mount
- Intelligent BMS
- Cycle Life: ≥6000
- Warranty :10 years



Lithium battery pack 6 strings

How many strings are 48V20AH lithium battery ... The ternary lithium battery standard specifies a voltage of 3.7v, full of 4.2v, three strings are 12v, 48v requires four three strings, but the ...

How many strings of 48v lithium iron phosphate battery pack

How many cells are in a set of lithium iron phosphate batteries? The whole set of batteries is 14 strings multiplied by 10 cells = 140 cells. Summary: Series and parallel have their own ...



18650 Battery Pack Calculator

May 28, 2025 · This 18650 battery pack calculator is used to determine the optimal configuration of 18650 lithium-ion cells for a specific power requirement. With a 12V battery pack

with 10Ah ...



Battery pack calculator : Capacity, C-rating, ampere, charge ...

Free battery calculator! How to size your storage battery pack : calculation of Capacity, C-rating (or C-rate), ampere, and runtime for battery bank or storage system (lithium, Alkaline, LiPo, Li ...



How many strings of lithium iron phosphate batteries ...

How many strings of lithium iron phosphate batteries can replace lead-acid batteries Can a lithium ion battery pack have multiple strings? Whenever possible, using a single string of lithium cells ...

How Many Cells in a Lithium Battery Pack? A Complete ...

Mar 14, 2025 · The arrangement and number of cells impact the battery pack's overall capacity and performance.

Users should consider these factors when selecting or building a battery ...



- LiFePO₄
- Wide temp: -20°C to 55°C
- Easy to expand
- Floor mount&wall mount
- Intelligent BMS
- Cycle Life:≥6000
- Warranty :10 years



How many strings of lithium battery packs are there

How many series elements are in a lithium ion battery pack? For example, a lithium-ion battery pack marked as 10.8 V nominal, 7.2 Ah can be assumed to contain three series elements ($3 \times \dots$)

HOW MANY STRINGS ARE 48V20AH LITHIUM BATTERY ...

How to connect lithium battery to power strip There are different ways to connect LED strip lights to a battery - it depends on whether you buy an LED strip that normally uses a DC power ...



How many strings of 24V lithium iron phosphate batteries ...

How many cells are in a set of lithium iron phosphate batteries? The whole set of batteries is 14 strings multiplied by 10 cells = 140 cells. Summary: Series and

parallel have their own ...



How do I calculate how many batteries I need?

Apr 25, 2020 · This is why you see low voltage lead acid batteries; it allows you to pack more energy storage into a single string without going over 12/24/48 volts. There are many ...



Battery pack calculator : Capacity, C-rating, ampere, charge ...

Battery calculator : calculation of battery pack capacity, c-rate, run-time, charge and discharge current Onlin free battery calculator for any kind of battery : lithium, Alkaline, LiPo, Li-ION, ...

48V lithium battery pack the difference between ternary lithium

...

Mar 24, 2021 · So the cost of the charger has also increased. In summary, the 48V battery pack and 14-series ternary

lithium battery pack have a higher charging voltage and discharge cut-off ...



How to Calculate the Number of Lithium ...

Number of parallel cells: $20\text{Ah}/2\text{Ah}=10$, that is, 10 parallel (10 cells are connected in parallel to increase battery capacity) Number of series: $48\text{V}/3.7\text{V}=12.97$, ...

HOW MANY STRINGS ARE 48V20AH LITHIUM BATTERY ...

Do you know lithium-ion battery capacity? More and more electric devices are now powered by lithium-ion batteries. Knowing these batteries' capacity may greatly affect their performance, ...



2MW / 5MWh
Customizable

How many strings of 12v lithium battery packs are best

Bosch 12-V Lithium Battery (2 Ah)
Outstanding performance - designed to efficiently power tools, with a light,



portable 12V Max battery pack. Runtime boost - engineered to deliver 50% more ...

How many strings of 48v battery packs do you need

The ternary lithium standard stipulates that the voltage is 3.7v, full of 4.2v, three strings are 12v, and 48v must have four three strings, but the lead-acid battery of electric ...



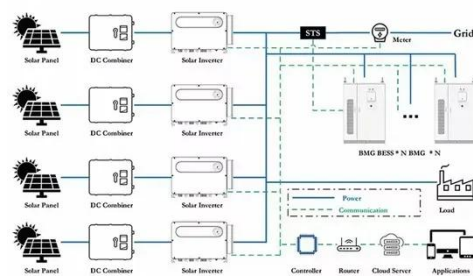
How many cells in a 48V lithium battery?

Nov 30, 2023 · It's worth noting that lithium-ion batteries typically have a nominal voltage of 3.6-3.7V per cell when fully charged. To achieve 48V for specialized applications like electric ...

How many strings are 48V20AH lithium battery ...

Mar 3, 2021 · Lithium battery pack 48V20AH generally single lithium battery is 3.5V, so 48V lithium battery pack needs $48/3.5=13.7$, just take 14 in

series. If ...



E-Bike Batteries

All categories of ebike, bicycle, scooter, cycling apparel and accessories, bike parts and tools. One-stop shopping for electric bikes. E-Bike reviews.

Battery Pack Calculator , Good Calculators

Here's a useful battery pack calculator for calculating the parameters of battery packs, including lithium-ion batteries. Use it to know the voltage, capacity, energy, and maximum discharge ...



Battery Pack Calculator , Good Calculators

Battery Pack Calculator Here's a useful battery pack calculator for calculating the parameters of battery packs, including lithium-ion batteries. Use it to



know the voltage, capacity, energy, and ...

Li-Ion BMS

Given a number of cells in a battery pack (such as 100 cells), they can be arranged as sets of cells directly in parallel, which are then connected in series (such as a 2P50S battery), or as ...

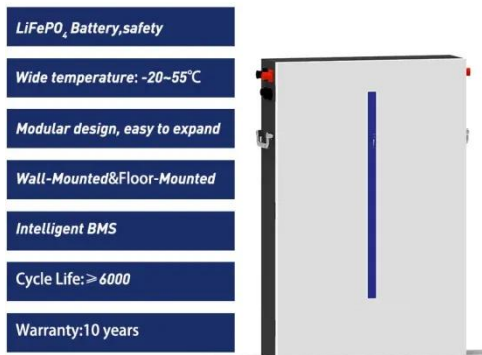


How many strings of 24v lithium battery packs should I use

Ditch the hassles of gas in favor of an eco-friendly, hassle-free and powerful alternative. This 24V 2.0 Ah Lithium-Ion battery features fade-free power, USB port, an onboard fuel indicator and is ...

VoltX 48V 100Ah Lithium Iron Phosphate Battery ...

Find VoltX 48V 100Ah Lithium Iron Phosphate Battery RV 4WD LiFePO4 Rechargeable - only available online on the Bunnings website and app.



Strings, Parallel Cells, and Parallel Strings

Feb 15, 2016 · Whenever possible, using a single string of lithium cells is usually the preferred configuration for a lithium ion battery pack as it is the lowest cost and simplest. However, ...

How Many Cells Are in a 48V Battery? Configurations, ...

Mar 14, 2025 · In summary, a 48V battery generally contains either 13 lithium-ion cells or 24 lead-acid cells. Understanding these configurations assists in selecting the appropriate battery for ...



How to Choose the Right Ah for 48V Li-ion Battery Pack?

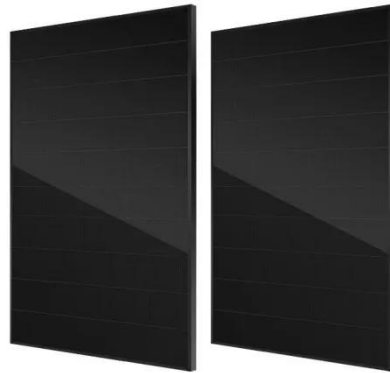
Apr 27, 2025 · To create a 48V pack, you need about 13 or 14 cells connected in series ($13 \times 3.7V \approx 48V$). A high-capacity



pack might have several strings of 13 cells connected in parallel to ...

Calculate the number of series and parallel connections for lithium

May 19, 2024 · Series parallel connection of lithium batteries is particularly common in some PACK factories. Generally, lithium battery packs are composed of batteries in series parallel ...



Test certification
CE FC



HOW MANY STRINGS SHOULD A LITHIUM BATTERY HAVE?

How many strings of 36v lithium battery pack A 36V lithium-ion battery pack typically requires 10 cells arranged in series. Each lithium-ion cell has a nominal voltage of 3.6V to 3.7V. When ...

Contact Us

For catalog requests, pricing, or partnerships, please visit:
<https://www.wf-budownictwo.pl>