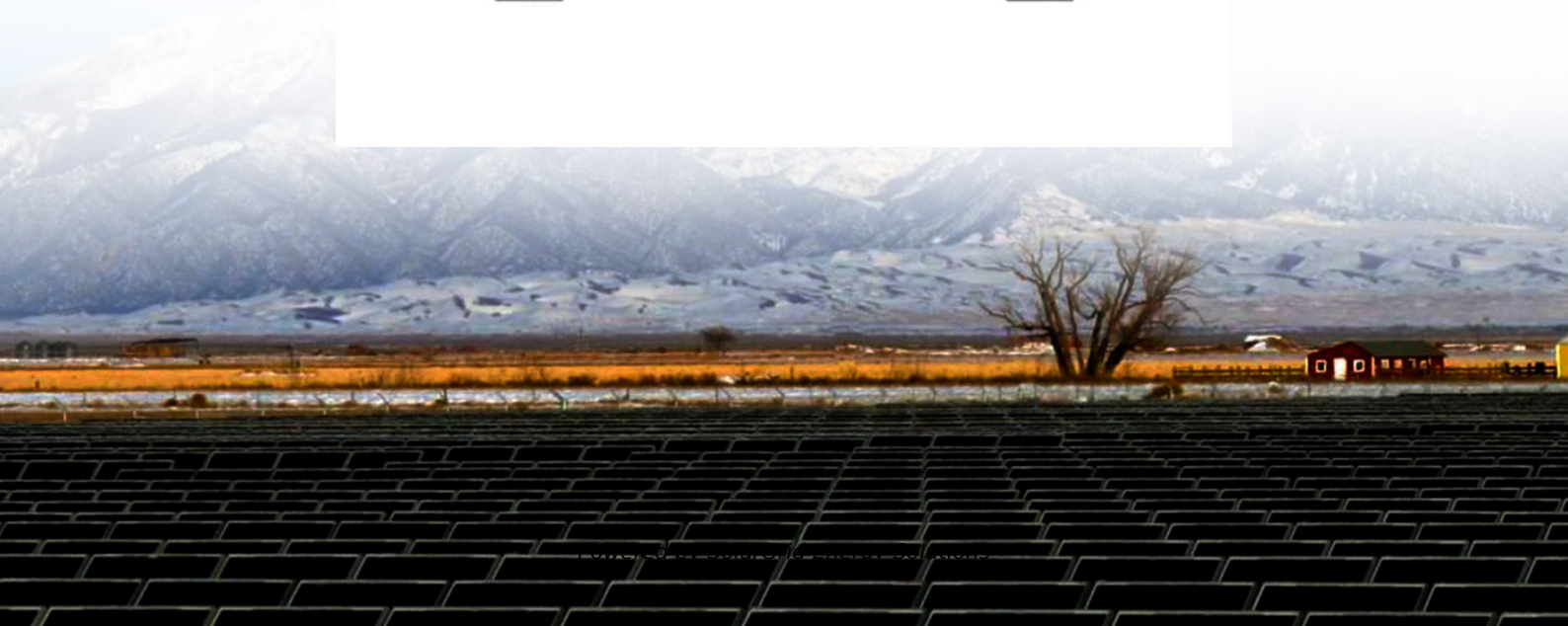


SolarGrid Energy Solutions

How many amperes does a lithium battery pack usually discharge



Overview

What is the discharge rate of a lithium ion battery?

The discharge rate is limited by your load. If the load consumes N Amps then your only choice is a) Reduce the load current b) drop the voltage. You did not mention the voltage. What you need is the battery's discharge rate. How many amps per hour. Lithium ion usually charge at 0.8 of discharge rate.

What voltage do you need to charge a lithium ion battery?

You did not mention the voltage. What you need is the battery's discharge rate. How many amps per hour. Lithium ion usually charge at 0.8 of discharge rate. Charge and discharge rates of a battery are governed by C-rates.

How do lithium ion batteries work?

Learn more about lithium-ion batteries. Li-ion batteries have a mostly flat discharge voltage curve, which helps devices run steadily until the battery is nearly empty. Discharge rate, temperature, and battery chemistry strongly affect battery capacity, lifespan, and safety; managing these factors improves performance.

Why do lithium ion batteries have a flat discharge curve?

These curves show how voltage and current change as the battery charges and discharges. You typically see a flat discharge curve in lithium-ion cells, which means the voltage remains stable through most of the discharge cycle. This stability is essential for battery pack reliability in industrial, medical, and robotics applications.

What is discharge current in a lithium ion battery?

The discharge current is the amount of current drawn from the battery during use, measured in amperes (A). Li-ion cells can handle different discharge rates, but drawing a high current for extended periods can generate heat and reduce the battery's lifespan.

What is discharge voltage in a Li-ion battery?

The discharge voltage is the voltage level at which the cell operates while providing power. For li-ion cells, the typical voltage range during discharge is from 3.0 to 4.2 volts. It's crucial to avoid letting the voltage drop below 3.0 volts, as over-discharging can lead to irreversible damage and significantly reduce the battery's capacity.

How many amperes does a lithium battery pack usually discharge

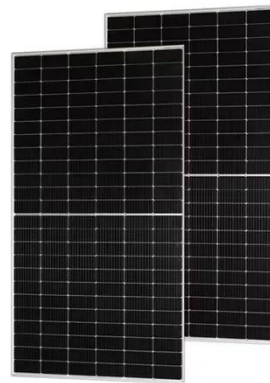


Li-Ion Cells: Charging and Discharging Explained ...

Jun 12, 2024 · Typically, li-ion cells are charged at a rate between 0.5C and 1C, where "C" represents the battery's capacity in ampere-hours (Ah). For ...

How is the Battery Discharge Rate Calculated?

Jan 21, 2023 · The battery discharge rate is the amount of current that a battery can provide in a given time. It is usually expressed in amperes (A) or ...



How Many Amperes Does a 9V Battery Deliver?

Jan 27, 2025 · Discover how many amperes a 9V battery delivers, its capacity, discharge rate, and much more. Get all the details on current, types, lifespan, ...

Lithium Battery Calculator Guidance

Oct 19, 2023 · We can guide you in calculating lithium battery capacity, voltage, wattage, consumption, and charge and discharge time.

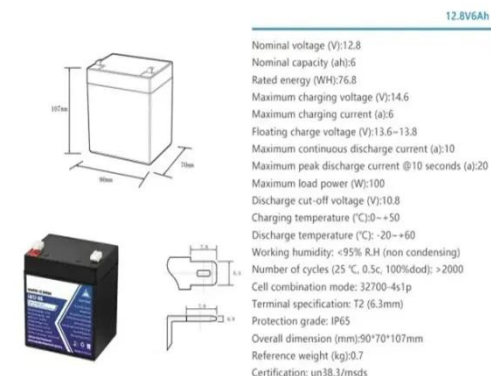


Lithium (LiFePO4) Battery Charge Time ...

Mar 3, 2023 · Calculating the battery's exact charge time is not an easy task. However, you can use our lithium battery charge time calculator to find out.

Battery Packs Explained: How They Work, Usage, and a ...

Feb 28, 2025 · What Are Battery Packs and How Do They Work? Battery packs are portable power sources that store electrical energy for later use. They typically consist of multiple ...



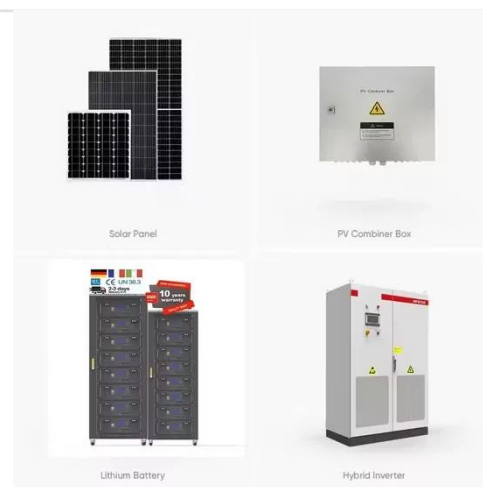
How Many Amps Can a 12V Battery Supply

Jun 9, 2023 · Get insights into the world of 12V batteries! Understand "How Many Amps Can a 12V Battery Supply", the factors influencing it, and how to ...



How many amperes can a lithium battery discharge

How many amperes can a lithium battery discharge Notice that at 100% capacity, 12V lithium batteries can have 2 different voltages; depending if the battery is still charging (14.4V) or if it ...



Online calculator: Battery discharge time depending upon load

Battery discharge time depending upon load This article contains online calculators that can work out the discharge times for a specified discharge current using battery capacity, the capacity ...

How many amperes of charging does the lithium battery pack ...

Here's a useful battery pack calculator for calculating the parameters of battery packs, including lithium-ion batteries.

Use it to know the voltage, capacity, energy, and maximum discharge ...



What Are the Discharge Characteristics of Li-ion Batteries

Jul 22, 2025 · For example, a typical lithium-ion battery delivers a nominal voltage between 3.5 and 3.7 V, with capacity and voltage changing under different loads. At 50% state of charge, ...

How Many Amps Can a 18650 Battery Deliver? Understanding Discharge

Jun 18, 2025 · Learn about 18650 battery current, including continuous, pulse, and maximum discharge rates, and key factors affecting performance to choose the right battery for ...



How many amperes are usually used for lithium battery pack discharge

One charging cycle refers to fully charging and draining the battery.



Lithium-ion batteries can last from 300-15,000 full cycles. Partial discharges and recharges can extend battery life. Some ...

Battery pack calculator : Capacity, C-rating, ampere, charge ...

Battery calculator : calculation of battery pack capacity, c-rate, run-time, charge and discharge current Onlin free battery calculator for any kind of battery : lithium, Alkaline, LiPo, Li-ION, ...



- LiFePO₄ Battery,safety
- Wide temperature: -20~55°C
- Modular design, easy to expand
- The heating function is optional
- Intelligent BMS
- Cycle Life: > 6000
- Warranty: 10 years



Battery Charge And Discharge Calculator , Charge Time, Run ...

Mar 17, 2025 · The Battery Charge and Discharge Calculator serves as a tool for anyone seeking to optimize energy management. This calculator enables you to accurately estimate the ...

Six Important Parameters of Lithium Batteries

Dec 9, 2021 · Battery capacity is typically measured in AH (Ampere-hours). Another method of measurement is in terms of CELL (per unit plate) in

watts ...

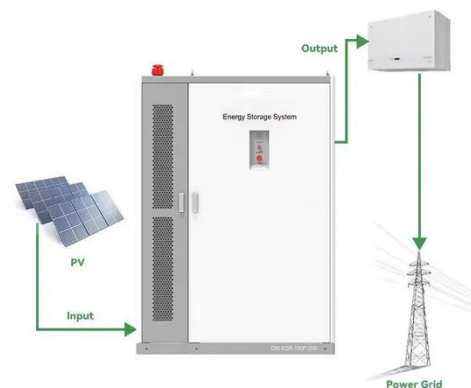


How many A does a lithium battery pack discharge

Lithium ion usually charge at 0.8 of discharge rate. Charge and discharge rates of a battery are governed by C-rates. The capacity of a battery is commonly rated at 1C, meaning that a fully ...

Understanding Car Battery Amperage: How Many Amps Are ...

Nov 20, 2024 · Understand car battery amperage, its role in starting engines, powering components, and factors affecting performance in this guide.



How to test the capacity of a Lithium Battery Pack?

The Basics of Battery Capacity Before we dive into the testing methods, let's quickly go over what battery capacity

means. Battery capacity is usually measured in ampere - hours (Ah) or ...



Battery pack charge and discharge rate

How to size your storage battery pack : calculation of Capacity, C-rating (or C-rate), ampere, and runtime for battery bank or storage system (lithium, Alkaline, LiPo, Li-ION, Nimh or Lead ...



LIQUID COOLING ENERGY STORAGE SYSTEM

EMS real-time monitoring
No container design
flexible site layout



Cycle Life
≥8000

Nominal Energy
200kwh

IP Grade
IP55

Ultimate Guide to Lithium-Ion Battery Voltage ...

Jul 31, 2025 · Lithium-ion battery voltage chart represents the state of charge (SoC) based on different voltages. This Jackery guide gives a detailed ...

Explain Charging and Discharging of Lithium-Ion Battery

Feb 7, 2025 · Learn how lithium-ion batteries charge and discharge, key components, and best practices to extend lifespan. Discover safe charging

techniques, voltage limits, and ways to ...

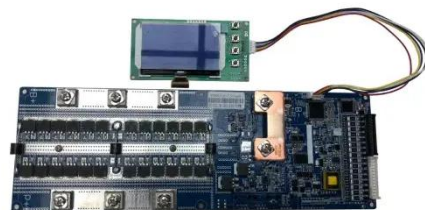


Lithium Battery Charge Time Calculator

Dec 11, 2024 · A lithium battery charge time calculator is a specialized tool designed to help users estimate and plan their battery charging duration ...

Safe and stable discharge rate for Li-Ion battery ...

Mar 2, 2017 · What you need is the battery's discharge rate. How many amps per hour. Lithium ion usually charge at 0.8 of discharge rate. Charge and ...



How to Calculate the time of Charging and ...

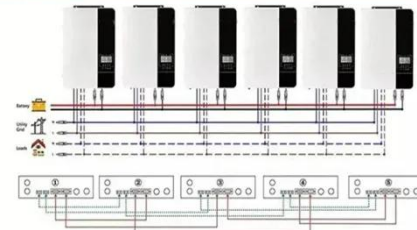
Dec 25, 2011 · How do I calculate the approximated time for the Charging and Discharging of the battery? Is there any equation available for the purpose? If ...



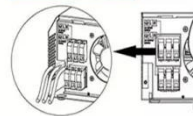
Lithium battery charge and discharge theory and ...

Apr 19, 2023 · When the battery voltage is equal to the maximum charging voltage and the charging current is reduced to C/10, the battery is considered ...

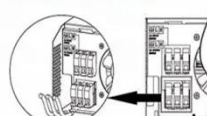
Parallel (Parallel operation up to 6 unit (only with battery connected))



AC input wires



AC output wires



[Guide for Users] Battery Charging and ...

Dec 10, 2024 · Learn the differences between charging and discharging voltage. Explore their effects on battery performance, and discover how they influence ...

How many amperes does a lithium battery pack charge

Battery Charge and Discharge Rate Calculator: C-rating To Amps $C/2 = 0.5C$
 $C/5 = 0.2C$ $C/10 = 0.1C$ $C/20 = 0.05C$
 how to use this calculator? 1 - Enter the

battery capacity and select the unit ...



The Complete Guide to Lithium-Ion Battery ...

Nov 14, 2023 · This chart shows how voltage changes as the battery's charge capacity decreases. Notice how the voltage doesn't drop linearly - it stays ...

A Guide to Understanding Battery Specifications

Dec 18, 2008 · A battery is a device that converts chemical energy into electrical energy and vice versa. This summary provides an introduction to the terminology used to describe, classify, ...



BU-501: Basics about Discharging

Oct 27, 2021 · To protect the battery from over-discharging, most devices prevent operation beyond the specified end-of-discharge voltage. When removing the ...

LFP12V100


AA Battery Current-Introduction, Amps and Comparison

Dec 1, 2021 · AA represents "50.5mm x 14.5mm." Thus it means A is larger than AA and larger than AAA. How much current can an AA battery supply? Most car batteries are 6 to 12 volts. A ...



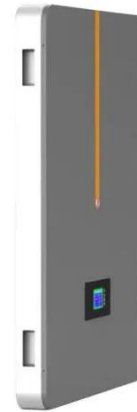
Battery pack charge and discharge rate

What is the discharge rate of a lithium ion battery? The discharge rate is limited by your load. If the load consumes N Amps then your only choice is a) Reduce the load current b) drop the ...

Explain Charging and Discharging of Lithium-Ion ...

Feb 7, 2025 · Learn how lithium-ion batteries charge and discharge, key components, and best practices to extend lifespan. Discover safe charging

...



What amp should I charge my LiFePO4 battery?

Feb 15, 2023 · Refer to my article about my recommended chargers for LiFePO4 batteries. Conclusion Figuring out at what amp you should charge your ...

Battery pack calculator : Capacity, C-rating, ampere, charge ...

How to size your storage battery pack : calculation of Capacity, C-rating (or C-rate), ampere, and runtime for battery bank or storage system (lithium, Alkaline, LiPo, Li-ION, Nimh or Lead batteries



How Many Amps is a 18650 Battery?

Jul 14, 2023 · A critical metric of these batteries is the discharge rate, essentially dictating how much current

the battery can deliver at once. This aspect is ...



How to Discharge a Lithium Battery: A Step-by-Step Guide

Nov 2, 2023 · Understanding how to properly discharge a lithium battery is essential for its longevity and optimal performance. In this guide, we will walk you through the steps involved ...



Contact Us

For catalog requests, pricing, or partnerships, please visit:
<https://www.wf-budownictwo.pl>