

SolarGrid Energy Solutions

How big an inverter do I need for a 300Am battery



Overview

Note! The battery size will be based on running your inverter at its full capacity
Assumptions 1. Modified sine wave inverter efficiency: 85% 2. Pure sine wave inverter efficiency: 90% 3. Lithium Battery: 100%.

What is the recommended battery size for an inverter?

Interpreting Results: Once you input the required data, the calculator will generate the recommended battery size in ampere-hours (Ah). For instance, if your power consumption is 500 watts, the usage time is 4 hours, and the inverter efficiency is 90%, the calculator might suggest a battery size of approximately 222 Ah.

What is the calculate battery size for inverter calculator?

The Calculate Battery Size for Inverter Calculator helps you determine the optimal battery capacity needed to support your inverter system. By inputting critical parameters such as power consumption, inverter efficiency, and desired usage time, this calculator provides a precise battery size recommendation tailored to your specific needs.

How much battery do I need to run a 3000-watt inverter?

You would need around 24v 150Ah Lithium or 24v 300Ah Lead-acid Battery to run a 3000-watt inverter for 1 hour at its full capacity Here's a battery size chart for any size inverter with 1 hour of load runtime Note! The input voltage of the inverter should match the battery voltage.

How much battery should a 500 watt inverter use?

For instance, if your power consumption is 500 watts, the usage time is 4 hours, and the inverter efficiency is 90%, the calculator might suggest a battery size of approximately 222 Ah. Practical Tips: Ensure all input values are accurate to avoid skewed results.

How do I choose the right inverter size?

Here is our last bit of advice on how to select the correct inverter size: Check

our inverter size chart. List all your appliances in the function of their power output. Apply our inverter size formula. Do not exceed 85% of your inverter's maximum power continuously. Oversize your inverter for extra appliances in the future.

What are the different solar inverter sizes?

Solar generators range in size from small generators for short camping trips to large off-grid power systems for a boat or house. Consequently, inverter sizes vary greatly. During our research, we discovered that most inverters range in size from 300 watts up to over 3000 watts. In this article, we guide you through the different inverter sizes.

How big an inverter do I need for a 300Ah battery

Warranty
10 years

LiFePO₄

Intelligent BMS

Wide Temp:
-20°C to 55°C



How Many Solar Panels Do You Need For a ...

Jan 28, 2023 · 300 ah battery is an ideal companion for solar panels. No matter how much energy your system generates, it needs batteries to store energy ...

Solar inverter size: Calculate the right size for ...

2 days ago · Solar inverter size: Calculate the right size for your inverter
An inverter converts the energy generated by your solar panels or battery into ...



GEL Battery



Lithium Battery



Container storage system



Power Battery

How to Calculate the Right Battery Size for Your ...

To help you find the perfect match, here's a step-by-step guide to calculate battery size based on your power needs and inverter specifications. 1.1. ...

What Size Inverter Do You Need for Your Home? - Renogy US

3. Renogy Inverter Charger Do you need a dependable backup power solution for homes with both grid-tied or off-grid solar systems? Renogy Inverter Charger will be your go-to partner. It ...



Find the Right Inverter Size: How Big An Inverter ...

Oct 25, 2022 · An inverter is a device that turns the power from a 12 volt DC battery, like the one in your car or truck, into the 120 volt AC power that runs ...

What Size Inverter Do You Need for Your Home?

The first step in determining the size of inverter you need for your home is to calculate the total wattage of all the devices you plan to power. This involves creating a list of all your electrical ...



What Size Inverter You Need (Calculations + Battery)

Oct 6, 2022 · Inverters have a power rating in watts (W), which determines how much power they can supply, and the batteries have an amp-hour rating,

which measures how much current ...



How Big of a Battery Do I Need to Run a 2000W Inverter?

Dec 25, 2023 · To run a 2000W inverter, you typically need a battery with at least 200Ah capacity if you plan to run it for one hour. This calculation assumes a 100% efficiency rate, but in ...

Our Lifepo4 batteries can be connected in parallels and in series for larger capacity and voltage.



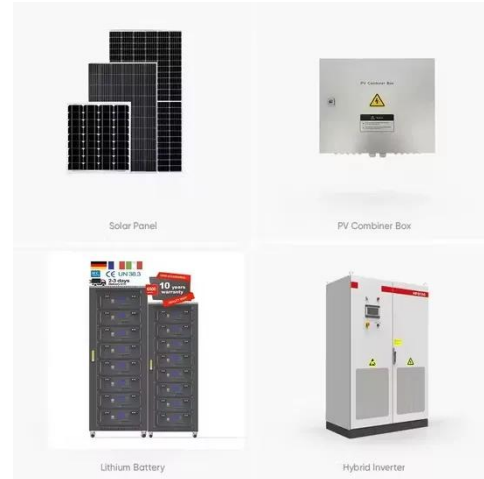
What Size Power Inverter Is Needed for a House ...

Mar 4, 2025 · You know you need a power inverter, but the big question is: How big of a power inverter do I need? In general, a 3000W to 5000W inverter ...

What Inverter Size Do I Need to Run Power Tools?

Routers and drills require 1500 watts to start up, but large table and circular saws may need up to 4000 watts to run effectively. Calculate Inverter Size For

Power Tools The inverter size must ...



What Inverter Size Do I Need to Run a Coffee Maker?

A coffee maker requires a lot of watts to run. Make sure your inverter is the right size to get that coffee brewed right.

How Many Batteries Do I Need for a 5000W Inverter

To power a 5000W inverter, you have to consider more than just the number of batteries. The battery capacity, the inverter voltage input and how long you need to use the inverter are ...



What Size Inverter Do I Need for My RV?

Jun 22, 2025 · RV inverters allows conversion from 12V battery power to 120V AC power. For your power needs, you need the right size inverter for your

RV.



What Inverter Size Do I Need to Run a Laptop?

A laptop can run off an inverter with enough power. Use this simple guide to find the right inverter for your computer.



Calculate Battery Size for Inverter Calculator

Mar 14, 2025 · The Calculate Battery Size for Inverter Calculator helps you determine the optimal battery capacity needed to support your inverter system. By inputting critical parameters such ...

What Size Inverter Do I Need?

But whether you need a big inverter or a small inverter, you can figure out the appropriate size by taking a look through our inverter size calculator. First, ...



What Inverter Size Do I Need to Run an Air Compressor?

An air compressor requires plenty of power to run. Your inverter must be the right size to keep your air compressor and tools running.

Inverter Battery Size Calculator , Enviraj

Calculate the ideal battery size for your inverter system. Input load, backup time, voltage, and battery type to find the required capacity.



Solar Inverter & Battery Sizing Calculator

Apr 30, 2025 · LuxpowerTek solar inverter and battery Sizing Calculator are simple and easy to understand. All you need to do is enter the information ...



Inverter Size Calculator

The Inverter Size Calculator is a digital tool that allows you to determine the correct inverter size needed for a specific total wattage load, considering factors like safety margins and inverter ...



What Size Inverter To Charge E-Bike Battery?

Ebike Inverter Size Chart What Is An Inverter? An inverter is a compact electronic component that converts direct current (DC) into alternating current (AC) at ...

How Many Batteries Do I Need for My Inverter?

Table of Contents Calculating How Many Batteries You Need Calculate your daily power consumption in watt-hours. Determine how many hours you want to

...



Power Conversion System

- Single-stage three-level modularization
- Multi-branch input to reduce battery series and parallels connection

What size inverter do I need for a refrigerator?

Feb 6, 2024 · For example, in my case, I didn't need a 1500-watt inverter to run my 7 Cu. ft. refrigerator, and was able to run it on a 12V battery using a 500 ...

What Size Battery Do I Need for a 1000W Inverter?

Dec 13, 2023 · To power a 1000W inverter, you typically need a battery with a minimum capacity of 100Ah if you plan to run it for about one hour. However, the actual size may vary based on ...



What Size Inverter Do I Need?

Jul 25, 2024 · To figure out how long a 100Ah battery will run a 1000W inverter, you need to consider the battery's voltage and the inverter's efficiency. ...



What Size Inverter Do I Need to Run an Air Fryer?

Air fryers can run on inverters, but it must be the right size. The battery must also have sufficient capacity to load the air fryer.

1mwh (500kw/1mw)

AIR COOLING
ENERGY STORAGE CONTAINER



Best inverter for charging tool batteries

Jun 9, 2017 · Some people install a second battery with an isolator so that the inverter will never discharge the battery used for starting the engine, but I ...

The Only Inverter Size Chart You'll Ever Need

Sep 25, 2023 · During our research, we discovered that most inverters range in size from 300 watts up to over 3000 watts. In this article, we guide you ...

INTEGRATED DESIGN

EASY TO TRANSPORT AND INSTALL,
FLEXIBLE DEPLOYMENT



How Big of an Inverter Do I Need to Run a Whole House?

Aug 6, 2024 · Choosing the right size of an inverter is a critical decision when planning to power your entire house with solar energy. Inverters serve as the bridge between your solar panels, ...

What Inverter Size Do You Need to Run a Freezer?

Looking online for what inverter size to run freezers can be frustrating because most provide information about refrigerators. If you want to only run a chest freezer for instance, you can do ...



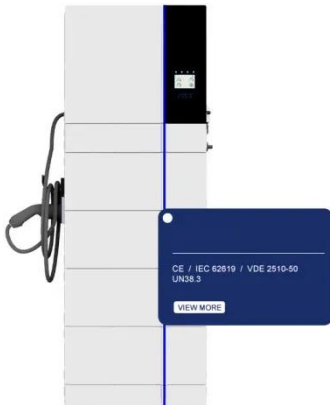
How To Size an Inverter: Solar Inverter Sizing ...

Jul 11, 2024 · Optimize your inverter size for maximum efficiency and safety - find out how to size it correctly to avoid potential issues.



What size fuse between battery and inverter?

Apr 22, 2024 · Do I need a fuse between battery and inverter? The short answer is yes, you do need a fuse (or a circuit breaker) between your battery bank ...



What Size Inverter Do I Need To Run A Tv?

Mar 3, 2023 · Do i need an inverter for 12v Tv? the short is No, but you'd need a DC-DC converter to eliminate any voltage fluctuations. if you have a 12v ...

Solar Inverter Sizing Calculator: Important Guide

Nov 18, 2024 · This comprehensive guide will walk you through solar inverter sizing, explain its importance, and help you understand how to use a

solar ...



How Big of a Power Inverter Do I Need? , Best Buy Guidebook

Sep 30, 2024 · Planning to secure your electricity needs in case of a power failure? You need to start by choosing the right inverter for your power need needs.

Contact Us

For catalog requests, pricing, or partnerships, please visit:
<https://www.wf-budownictwo.pl>