

SolarGrid Energy Solutions

Horizontal plug-in solar container installation angle



Overview

What is the tilt angle of a solar cell array?

2. Tilt angle The tilt angle is the angle between the plane of the solar cell array and the horizontal ground, and it is hoped that this angle is the optimal tilt angle for the array when its annual power generation is at its maximum.

How does a tilt angle affect solar radiation?

For due south (with an azimuth angle of 0°), as the tilt angle gradually transitions from horizontal (with an inclination angle of 0°) to the optimal tilt angle, the amount of solar radiation continuously increases until it reaches its maximum value, and then decreases as the tilt angle increases.

What is the azimuth angle of a solar cell array?

1. Azimuth angle The azimuth angle of a solar cell array is the angle between the vertical plane of the array and the south direction (set as negative angle for eastward deviation and positive angle for westward deviation).

What is the relationship between oblique solar radiation and azimuth angle?

For cases where the azimuth angle is not 0° , the value of oblique solar radiation is generally low, and the maximum solar radiation value is near the inclination angle close to the horizontal plane. The above is the relationship between azimuth angle, tilt angle and power generation.

Horizontal plug-in solar container installation angle



How to install horizontal solar , NenPower

Aug 19, 2024 · 1. The process of installing horizontal solar panels involves several critical steps, including planning, selecting suitable equipment, securing ...

Solar Panel Angle Calculation: Your Ultimate ...

Oct 22, 2024 · Learn how to calculate solar panel angle for optimal energy. Discover factors, methods, and tools to maximize solar panel efficiency.



Photovoltaic panel installation angle 25 degrees

The best angle for solar panels in the UK is about 40 degrees from horizontal. This varies slightly around the country, but not by much. A 2019 study from York University found that the ...

What is the ideal angle for mounting solar panels?

Oct 29, 2024 · SIC Solar systems are engineered for easy installation, making it simpler for professionals to adjust the angle and secure the panels without ...



Solar panels installation angle , SUNSAY ENERGY

Jan 8, 2022 · The solar station is designed as a well-functioning system, for which all design characteristics are important, as well as following the technology of assembly and connection ...

What is the Suggested Tilt Angle of a ...

Hot Climates - Flatter Angles: Reduce overheating and maintain efficiency during summer. Conclusion The suggested tilt angle for photovoltaic solar panels is ...



how to convert radiation on horizontal plane to an inclined one

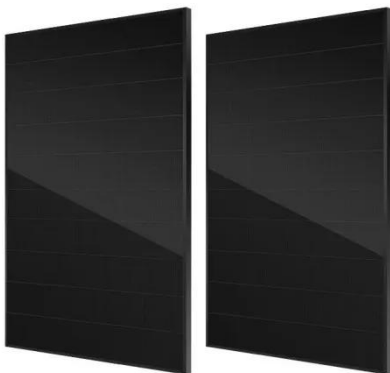
Apr 21, 2015 · This link is much more through in the discussion of how to calculate the incidence angle. \cos



(incidence angle) * direct radiation =
direct radiation incident to the plane of
the ...

Solar Panel Angle Calculator - Solartap

Feb 21, 2023 · Your solar panels' tilt angle impacts how efficiently they operate. Give our solar panel angle calculator a try to determine the best angle for your ...



Mounting solar panels on a 40 foot container?

Jun 29, 2022 · Looking at filling a vertical wall on a 40 foot high cube container with solar panels. Has anyone done anything like that? How did they mount them? Attaching two by fours to the ...

Vertical Solar Panels vs. Horizontal Solar Panels: Key ...

Dec 24, 2024 · How do vertical solar panels compare in terms of installation cost? Vertical panels may have slightly higher installation costs due to

customization and mounting complexity.
Are ...



Inclination angle for solar modules , CUBE CONCEPTS

Nov 26, 2024 · For optimum energy yield, the recommended angle of inclination is 30 to 35 degrees. This orientation enables particularly high yields at midday, when the sun is at its ...

The correct alignment of a solar system

Feb 13, 2024 · Which orientation is best for installing a solar system? A south-facing orientation with an angle of inclination that maximizes the time in which the sun's rays can reach the solar ...



Solar Panel Angle: Definition, and How to Calculate

Aug 19, 2024 · Solar panel angle is the tilt at which a solar panel is installed.

Installing solar energy is more cost-effective and energy-efficient if you select ...



Solar installation angle: the key to improving ...

Oct 13, 2023 · The solar installation angle refers to the angle between the solar panel and the horizontal ground. This angle has a significant impact on the ...



Solar Panel Orientation: Everything You Need to Know

Aug 19, 2024 · The angle represents the vertical tilt of the solar panels, measured in degrees from the horizontal. The efficiency represents the ratio of the electrical output to the solar input of ...

Photovoltaic panel installation angle specifications and ...

oltaic (PV) panel optimal tilt angles for all countries worldwide. It then estimates the incident solar radiation normal to either tracked or optimally tilted panels

relative to horizontal panels ...



The many ways to install a plug & play solar kit ...

Jan 30, 2024 · Since in vertical installation production of solar panels tends to decrease, and the ideal angle for a solar panel in Europe is 30-35 degrees, ...

Can solar panels be installed vertically?

Discover the pros and cons of vertical solar panels, compare them with rooftop installations, and learn about their investment returns and payback periods, along with answers to common ...



Mount PV Modules Vertically or Horizontally: ...

Choosing whether to install PV modules horizontally or vertically depends primarily on the available space, the angle of sun exposure, and specific ...

ESS



How I turned a shipping container into a solar ...

Mar 26, 2024 · I mean, I took the easy way out with the Pecron system, but it's still a cool feeling to start with a bare shipping container and end up with an off ...



Solar installation angle: the key to improving photovoltaic ...

Oct 13, 2023 · The solar installation angle refers to the angle between the solar panel and the horizontal ground. This angle has a significant impact on the power generation efficiency of ...

How to install vertical solar panels , NenPower

Aug 28, 2024 · 1. The installation of vertical solar panels is a viable approach to maximizing space and efficiency. 2. This method is particularly beneficial in

...



ESS



How to Find the Optimal Tilt Angle for Solar ...

Dec 7, 2024 · Ever wondered if you're squeezing every possible watt out of your solar panels? It turns out the answer lies in finding the perfect tilt angle -- a ...

Solarcontainer explained: What are mobile solar ...

Jul 15, 2025 · The solar container can be used for short-term use at events, for longer use, for example over the summer months, or as a long-term solution. ...



Solar Orientation Calculators: Finding the Best ...

Oct 22, 2024 · Discover how to use a solar orientation calculator for optimal solar panel angles and tilt. Maximize efficiency and save on energy costs.



Negative Panel Angle

Jan 1, 2025 · Set azimuth to 0 (north), tilt to 7. 10 KW array azimuth 0 tilt 7 produces 15,379 KWH per year. 10 KW array azimuth 180 tilt 7 produces 16,427 KWH per year. The above for a ...



Best Solar Panel Orientation for Maximum Output

Jun 30, 2025 · Understanding the best solar panel orientation is essential to maximizing the efficiency and output of your solar power system. Whether ...

Vertical Installation: A New Frontier for Solar ...

Jul 31, 2010 · In the global wave of energy transformation, solar energy is emerging as a crucial force due to its clean, sustainable nature. Solar panels,

...



How to define the installation angle of photovoltaic panels

How do I adjust the angle of a solar panel? Many solar angle calculators are available online for free. 4. Adjust the tilt angle of the solar panel. Once you have determined the optimal angle, ...

Calculation of installation angle for solar panel arrays

Apr 1, 2024 · The tilt angle is the angle between the plane of the solar cell array and the horizontal ground, and it is hoped that this angle is the optimal tilt angle for the array when its annual ...



Plug-In Solar Installation Instructions

Jun 18, 2020 · Plug-In Solar Connection Unit - Wiring Diagram Example Electrical Schematic Diagram Example G98 Engineering Recommendation Form



Enphase Micro-Inverter ...

Impact of Optimized Tilt and Orientation on ...

Oct 22, 2024 · Explore optimal tilt angles for solar power stations to maximize energy efficiency and economic returns amidst the growing PV industry's ...



Contact Us

For catalog requests, pricing, or partnerships, please visit:
<https://www.wf-budownictwo.pl>