

SolarGrid Energy Solutions

Emergency lighting battery cabinet installation specifications



Overview

What is a normal battery voltage for emergency lighting system?

If a central battery DC supply system is used for the Emergency Lighting System, it shall be operated at a normal battery voltage of not less than 24 volts and not more than 120 volts D.C. from a common bank. 7.

How to test emergency lighting installation?

The testing of emergency lighting installation shall be made by addressable emergency lighting system with central battery system at prescribed intervals with no disruption to any other electrical services.

Can a battery system be used for emergency lighting?

However, when non-maintained emergency lighting is required, it is possible to use a maintained central battery system and hold off relays to achieve local lighting circuit failure monitoring.

What should be included in an emergency lighting system?

The unit shall be furnished with a sealed dust tight relay, a test switch and diagnostic LED indicator lights to continuously monitor the status of the unit: Battery Failure, Battery Disconnected, Charger Failure, Lamp Failure, Service Alarm, AC "ON", Charger High Rate. The emergency lighting heads shall require no tools for orientation.

Do emergency lighting products need maintenance?

An end user should always ensure that regular testing and maintenance is carried out for all emergency lighting products in accordance with BS5266. This is much easier with a central battery system because testing can be controlled at one central point. A competent engineer should always be used to carry out maintenance.

What are the requirements for CBS cabinet containment?

Containment for the CBS Cabinets shall be done as per the requirement of the emergency lighting system and approved containment shop drawings. Panel board shall be located and installed with the maintenance distance for the accessible doors to open and close without any restrictions.

Emergency lighting battery cabinet installation specifications

ZB-S



The CEAG ZB-S is a reliable AC/DC central battery emergency lighting system popular worldwide it is installed in airports, stadiums, warehouses & more.

GENERAL SPECIFICATION

Dec 18, 2020 · The present edition (incorporating Corrigendum No. GSFS01-2017) of this General Specification was developed from the 2017 edition by the Fire Service Specialist Support ...



MOUNTING EXIT SIGNS AND EMERGENCY LIGHTING UNITS

1 day ago · MOUNTING EXIT SIGNS AND EMERGENCY LIGHTING When it comes to the installation and mounting of emergency lighting and exit signs, the steps are simple and easy ...

Electrical Installation Method Statement for Central Battery

Emergency

Method statement is intended to outline the activities and the methods used for installation of Emergency Lighting System or central battery system. All the electrical installation activities ...



1075KWHH ESS



Emergency Lighting Inverter Installation and Operation ...

The floor space at the installation site must be strong enough to support the combined weight of the Lighting Inverter unit and all battery cabinets. To ensure adequate load-bearing capacity, ...

Emergency Battery Options

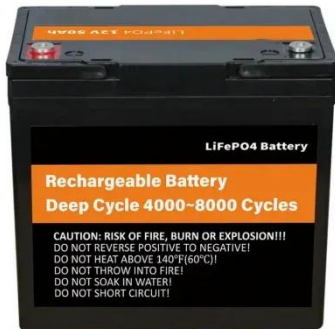
For use with frame-ins: LF8 1/TRT, LF8 2/TRT, LF8 2/DTT, LP8F, CCR82, LF6 1/TRT, LF6 2/DTT and LP6F. Specify option EL or ELR when ordering.
Construction EL: Emergency battery pack ...



Inverter Suggested Specifications

May 3, 2022 · 1.1 Scope Furnish and install a Dual-Lite LSN (Life Safety Network) Series Inverter System to provide a reliable source of emergency power, designed to operate during

periods ...



Complete Guide to the BS 5266 Emergency ...

Aug 29, 2023 · A self-contained luminaire houses all necessary components (battery, charger, control unit, lamp, diffuser, and test or monitoring facilities) ...



 **LFP 48V 100Ah**



Loadstar

Aug 18, 2024 · During battery operation when no mains supply is present, the emergency lighting system must attempt to clear the fault using the power supplied by the batteries via the inverter.

INSTALLATION & USER'S GUIDE

Mar 5, 2021 · Any battery used with this unit shall comply with the applicable requirements for batteries in the standard for emergency lighting and power equipment, UL 924. Cabinets are

...



Display screen
Linux operation system
quad-core processors
smooth and stable system



Central Battery Systems Emergency Lighting

Nov 25, 2021 · ng system has unique load characteristics. And since Emergency Lighting is a critical life-safety installation, it is vital that a Central Battery System is design ARGES Power ...

How To Correctly Connect Emergency Lights?

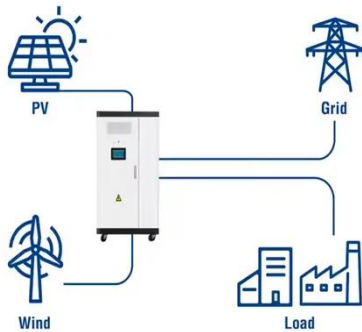
Nov 11, 2024 · Learn how to correctly connect emergency lights for safety. Follow steps for wiring, installation, and compliance with safety standards.



Emergency Lighting Units and Remotes , Lithonia Lighting

Emergency Lighting is required for every building type except single family dwellings. In these buildings it is

Utility-Scale ESS solutions



required for the path of egress that will typically include stairs, aisles, corridors, ...

Central Battery Systems Emergency Lighting

Mar 7, 2017 · ng system has unique load characteristics. And since Emergency Lighting is a critical life-safety installation, it is vital that a Central Battery System is design EMEX Power ...

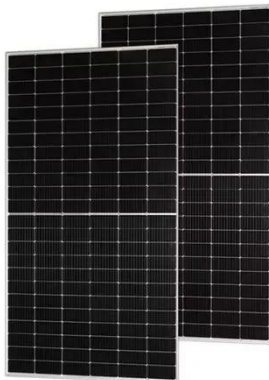


Requirements for Emergency Lighting Systems

May 26, 2018 · If a central battery DC supply system is used for the Emergency Lighting System, it shall be operated at a normal battery voltage of not less than 24 volts and not more than 120 ...

Central Battery Systems & Emergency Lighting , Powerguard

Powerguard design and build bespoke Central Battery Systems for Emergency Lighting, tailored to your specifications and built in-house by our expert team.



Standards emergency lighting

Mar 6, 2020 · EN 13032-3 Luminaires:
part1 - General requirements and tests
Luminaires: part 2.22 - Particular
requirements : Luminaires for
emergency lighting Specification for
lamp ...

Emergency Lighting Visual Guide 2025

1 day ago · This visual guide is meant to
provide a comprehensive overview on
the specification, installation, and
maintenance of Emergency Lighting. The
...



Solar Panel



Hybrid Inverter



Lithium Battery



Battery Cabinet

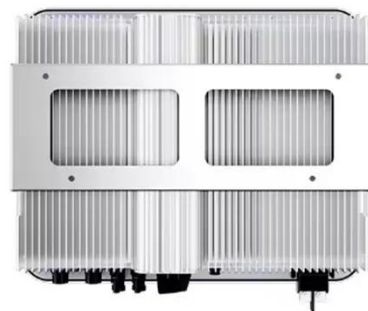
ESL Series

Jan 25, 2023 · Supply and install a
complete emergency lighting system as
described herein and shown on the
drawings. The Emergi-Lite® Smart
Diagnostic micro-controller board shall ...



Emergency cabinet battery assembly method

y Features of a Battery Charging Cabinet. Construction. Battery charging cabinets are made from shee steel, which is rugged and long-las ighting system in a building or facility. It provides a ...



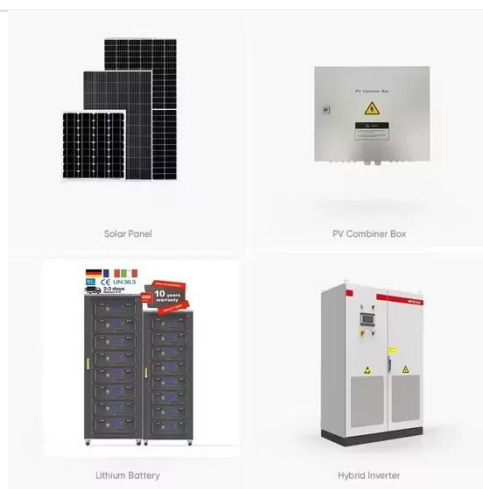
3 CATALOG

Jan 12, 2023 · BATTERY SPECIFICATIONS
d battery. The battery features a 24-hour recharge ime and provide 90-minutes of emergency run time. Comes standard with a current charge h ...

Emergency Lighting Inverter Installation and Operation ...

Feb 10, 2023 · The Power Wave 1 meets UL 924 requirements for emergency lighting system applications and

provides the security of 90-minutes of battery backup power. It is suitable for ...



Addressable Emergency Lighting with Central Battery ...

Oct 22, 2020 · Addressable Emergency Lighting with Central Battery System
Description: The Central Battery system (CBS) shall consist of a rectifier/battery charger, batteries, inverter, ...

NFPA Standard For Emergency Lighting

May 5, 2021 · Emergency systems are intended to automatically supply illumination, power, or both to designated areas and equipment in the event of ...



Instruction Sheet: Emergency Lighting Battery Care and ...

Jan 2, 2025 · For safe installation and operation, please read these instructions carefully and with full understanding. The instructions below must be followed

to ensure proper functioning of ...



ESL Series

Jan 25, 2023 · Typical specifications
Supply and install a complete emergency lighting system as described herein and shown on the drawings. The Emergi-Lite® Smart Diagnostic micro ...



Emergency Lighting Systems

Construction laws, labour laws, and EU regulations on lighting technology and workplace lighting therefore contain normative specifications for both the ...

CENTRAL BATTERY UNIT FOR EMERGENCY LIGHTING

Oct 15, 2024 · The batteries are always placed in a separate battery cabinet. The batteries are connected in series 18 x 12 V to the + (red) and - (black) cables

reserved for them.



Addressable Emergency Lighting with Central Battery ...

Oct 22, 2020 · 1.1 The Contractor shall design, supply, install, test and commission addressable emergency lighting installation with central battery system (CBS) and all necessary ...

SEC 11 Emergency Light 07 dd

Sep 16, 2021 · Central battery systems provide a solution to power and test an array of emergency luminaires all from one central point. The luminaires are all wired back to a main ...



CENTRAL BATTERY UNIT FOR EMERGENCY LIGHTING

Oct 15, 2024 · CENTRAL BATTERY UNIT FOR EMERGENCY LIGHTING Installation and maintenance instructions



- ✓ 100KWH/215KWH
- ✓ LIQUID/AIR COOLING
- ✓ IP54/IP55
- ✓ BATTERY 6000 CYCLES

Contact Us

For catalog requests, pricing, or partnerships, please visit:
<https://www.wf-budownictwo.pl>