

## SolarGrid Energy Solutions

# Can the inverter be connected to a 48V lithium battery



## Overview

---

While many inverters can be adapted to work with lithium-ion batteries, it's essential to check the specifications and compatibility of your particular inverter model. Should you pair a lithium-ion battery with an inverter?

Before you decide to pair a lithium-ion battery with your existing inverter, it's essential to consider several factors. These include the inverter's voltage, charging algorithm, and overall compatibility with lithium-ion technology. Not all inverters are created equal.

Can a 24V inverter run a 48v battery?

Explore the basics of using a 24V inverter on a 48V battery setup to understand its compatibility and potential advantages and disadvantages:  
Inverter Functionality: Inverters convert DC power from batteries into AC power, crucial for running household devices off-grid or during power outages.

Are all inverters compatible with all lithium batteries?

Not all inverters are compatible with all lithium batteries. Therefore, it is crucial to ensure that the inverter you choose is designed to work with the specific type of lithium battery you plan to use. Check Manufacturer Specifications: Both the battery and inverter manufacturers typically provide a list of compatible products.

What voltage should a 12V inverter run on?

The input voltage of the inverter should match the battery voltage. (For example 12v battery for 12v inverter, 24v battery for 24v inverter and 48v battery for 48v inverter)  
Summary What Will An Inverter Run & For How Long?

.

How to install a battery inverter?

1. Wrenches or pliers for tightening connections 2. Cable cutters and strippers to prepare the wires 3. A multimeter to check the voltage 4. Appropriate battery cables of correct sizes typically red for positive and black for negative terminal iii. Connect the positive terminal of the battery to the inverter.

How do you connect a lithium battery to an inverter?

**BMS Communication Link:** Most lithium batteries come with a built-in BMS that can communicate with the inverter. Ensure that this link is properly established by connecting the BMS output to the corresponding input on the inverter.

## Can the inverter be connected to a 48V lithium battery

---

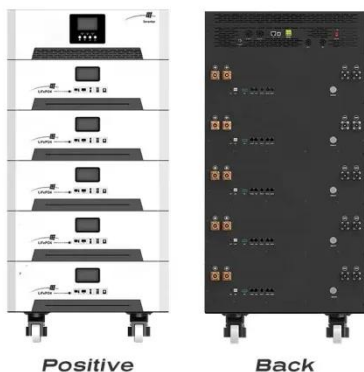


### Hybrid Inverter and Lithium Batteries: Setup ...

set up communication between lithium batteries and a hybrid inverter with our detailed step-by-step guide. Ensure optimal performance and longevity of your ...

### How to Connect a Large or Small Inverter to a ...

Nov 28, 2017 · by: Justin Gray This blog answers questions about which inverters can be powered by 12V DC accessory outlets (cigarette lighter sockets) and ...



### Understanding the Basics of Connecting Lithium ...

Oct 8, 2024 · To connect the lithium battery to the inverter: Use appropriate wiring. Thick, high-gauge wires are needed to handle high currents safely. ...

### Lithium (LiFePO4) Battery Runtime Calculator

Mar 3, 2023 · Calculating battery runtime on a load can be confusing for some folks. We created a lithium battery runtime/life calculator for your ease.



### **Combining Solar, wind into 48v off grid system.**

Jul 16, 2020 · The setup I have 2400 watts of solar, going into a smart solar 150/100 mppt. this charges 324 ah 48v lithium battery bank. This feeds into 3kva multiplus. I have a constant load ...

### **Battery connection for inverter**

Dec 16, 2024 · This article enlightens the features, risks and connectivity of inverter and the battery along with specific safety measures, its hazards and ...



### **Battery To Inverter Wire Size Calculator: What ...**

Apr 22, 2024 · The battery to inverter wire size calculator below will provide the size of the Copper wire that you need in AWG (American Wire Gauge) and



...

## How to Charge a 48V Lithium Battery Without a Charger

Dec 9, 2023 · Charging a 48V lithium battery without its dedicated charger is possible through alternative methods, but it requires caution and proper knowledge. Options include using ...



## Compatibility of Lithium-Ion Batteries with ...

Learn how to seamlessly integrate lithium-ion batteries with existing inverters for efficient and reliable power solutions. Maximize energy storage with Invertek ...

## 48V Battery Guide: Charging, Safety and More

Jan 31, 2024 · Your comprehensive resource on 48V lithium batteries - from charging instructions to safe handling and maintenance.



- ✓ IP65/IP55 OUTDOOR CABINET
- ✓ OUTDOOR MODULE CABINET
- ✓ OUTDOOR 5G BASE STATION CABINET
- ✓ WATERPROOF

## How Do You Calculate the Appropriate Inverter Size for a 48V Battery

Oct 28, 2024 · To calculate the appropriate inverter size for a 48V battery system, you need to determine the total wattage of the devices you plan to power. The formula is: Inverter Size ...

## Can You Mix Different Capacity Lithium Batteries?

Jun 20, 2023 · Schematic for multiple lithium batteries in parallel Here is a diagram for multiple lithium batteries in parallel. You can add individual battery ...



## Battery connection for inverter

Dec 16, 2024 · Connect the positive terminal of the battery to the inverter. Firstly, attach the positive red colored terminal of the battery to the inverter



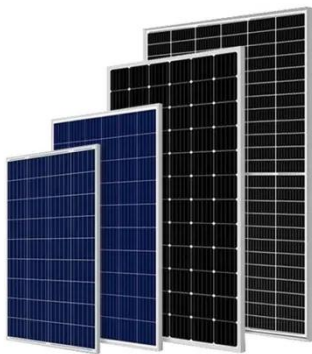
using the ...



---

## Can I Use a 24V Inverter on a 48V Battery

May 1, 2025 · If you attempt to connect the two directly, the inverter would not receive the correct voltage, potentially causing it to malfunction or even fail. However, it is possible to use a 24V ...



---

## Can You Use a 12V Battery with a 48V Inverter?

Dec 11, 2023 · How Can You Safely Use Multiple 12V Batteries to Create a 48V System? To safely create a 48V system using 12V batteries, connect four 12V batteries in series. This ...

---

## How to Connect Multiple 48V Lithium Batteries in Parallel

Sep 29, 2024 · Connecting multiple 48V lithium batteries in parallel can significantly enhance your energy storage capacity while maintaining the



same voltage. Here's a comprehensive step-by ...



## How Many Batteries for A 5000-Watt Inverter?

Apr 26, 2024 · This article will tell you how many batteries are needed for a 5kw inverter. We'll give you two examples of lithium and lead-acid batteries.

## Can I Use a 24V Inverter on a 48V Battery?

Dec 11, 2023 · No. Using a 24V inverter on a 48V battery is not recommended. The inverter is designed to operate at 24 volts, and connecting it to a 48V source can lead to overvoltage, ...



## Two Inverters on one Battery Bank

Mar 16, 2023 · When connecting multiple inverters to a single battery bank, you can either use synchronized inverters for the same load or separate inverters ...



## Number of Lithium Batteries to Supply a 5kW ...

Oct 14, 2024 · Amps =  $5000W / 12V = 416.67$  amps This level of current would quickly deplete a 12V battery and could cause damage. For larger inverters ...



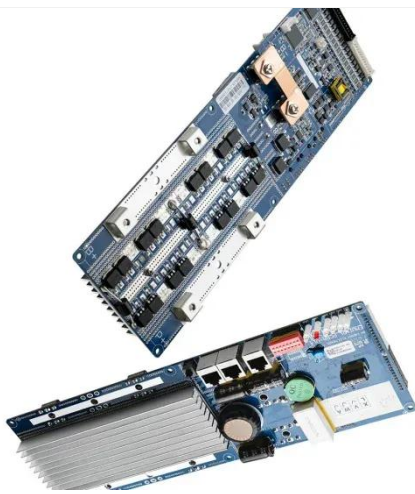
## Can A 48V Inverter Connect To A 24V Battery? Compatibility ...

Mar 30, 2025 · However, there are options available if you want to use a 24V battery system with a 48V inverter. One option is to use multiple 24V batteries in series. Connecting two 24V ...

## Connecting Inverters and Batteries for Maximum Efficiency

Jul 6, 2024 · Connecting an inverter to two parallel batteries, learning how to connect two inverter generators in

parallel, and understanding the nuances of connecting two inverters in parallel ...



### **Understanding the Basics of Connecting Lithium ...**

Oct 8, 2024 · Lithium batteries are widely used in energy storage systems due to their high efficiency, long life cycle, and light weight. Connecting a lithium ...

### **Compatibility Analysis Between Lithium Batteries and Inverters ...**

May 21, 2025 · GSL Energy's 5 KVA hybrid inverter, for instance, is designed to support 48V LiFePO4 batteries, ensuring native compatibility. Maximum Voltage Tolerance: Fully charged ...



### **Can a 48V Inverter Work with a 24V Battery? - A ...**

May 3, 2025 · Discover if a 48V inverter can work with a 24V battery. Understand the technicalities, compatibility, and solutions in this detailed guide.



## Do I need a special inverter for Lithium battery?

May 20, 2024 · Discover if you need a special inverter for a lithium battery. Learn about the important factors to consider for compatibility with your battery.



## Calculate Battery Size For Any Size Inverter (Using Our ...

4 days ago · By investing in a 48V lithium-ion battery, you can reduce maintenance costs and enhance the overall lifespan of your inverter system. Overall, integrating a 48V lithium-ion ...

## Batteries with different voltages 48v + 51.2v

May 12, 2023 · Also for the battery experts here - what is the best and worst that can happen with two different voltage batteries in parallel? No point in

forkng out for a Shunt if the batteries are  
...



## How to Charge 48V Battery with Solar Panel: A ...

Jan 4, 2025 · Learn how to efficiently charge a 48V battery with solar panels in this comprehensive guide. Discover the benefits of renewable energy, ...

## Can a 48V Inverter Work with a 24V Battery?

Feb 15, 2025 · Learn how to safely connect a 48V inverter to a 24V battery with practical solutions, including DC-DC converters and series wiring.



## Can I Use A 24V Inverter On A 48V Battery? Compatibility ...

Feb 7, 2025 · No, you should not use a 24V inverter with a 48V battery. A 24V inverter is designed for 24 volts. Connecting it to a 48V battery can lead

to overvoltage. This can damage ...



## Can I Connect Inverter to Lithium Battery?

Oct 31, 2024 · Yes, you can connect an inverter to a lithium battery. Lithium batteries, particularly Lithium Iron Phosphate (LiFePO4) batteries, are well-suited for use with inverters due to their ...



## Contact Us

For catalog requests, pricing, or partnerships, please visit:  
<https://www.wf-budownictwo.pl>