

## SolarGrid Energy Solutions

# Can a 60ah inverter be used



## Overview

---

What size inverter for a 200Ah battery?

To determine the appropriate inverter size for a 200Ah battery, consider the following: A 500VA inverter would be suitable, offering a balance between performance and battery life. For extended run times, consider larger inverters or additional batteries to meet higher power demands.

Do inverters use a lot of power?

Generally, yes. Inverters have an idle power usage. A Victron 48/5000 burns 30W just by being powered on. That's 0.72kWh/day or 60Ah of 12V battery capacity - would kill a medium size car battery in 24 hours even if no loads are supplied. The MPP Solar/Growatt units and most all-in-ones are notorious for high idle energy consumption.

Which Inverter should I Choose?

A 500VA inverter would be suitable, offering a balance between performance and battery life. For extended run times, consider larger inverters or additional batteries to meet higher power demands. Inverter Efficiency: Higher efficiency reduces energy loss and maximizes battery usage.

Can a 1000 watt inverter run a 100 Ah lithium battery?

In reality, factors such as inverter efficiency and battery discharge characteristics might affect the actual run time. When pairing a 100 Ah lithium battery with a 1000 watt inverter, it is crucial to ensure compatibility to achieve optimal performance.

How much power can a battery inverter push?

If the battery specification is 12V 50Ah, we multiplied 12V and 50A, obtained battery output power of 600 watts. If the efficiency of the inverter is 90%, then 90% then we multiplied by 600 watts, 540 watts draw. This means that your piece of the battery can push a maximum power output of 540W power

inverter.

How much battery do I need to run a 3000-watt inverter?

You would need around 24v 150Ah Lithium or 24v 300Ah Lead-acid Battery to run a 3000-watt inverter for 1 hour at its full capacity Here's a battery size chart for any size inverter with 1 hour of load runtime Note! The input voltage of the inverter should match the battery voltage.

## Can a 60ah inverter be used

---

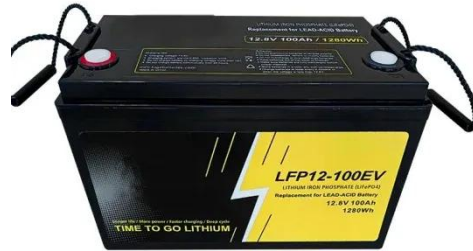


### Big inverters vs smaller inverters

Jun 7, 2021 · Inverters have an idle power usage. A Victron 48/5000 burns 30W just by being powered on. That's 0.72kWh/day or 60Ah of 12V battery capacity ...

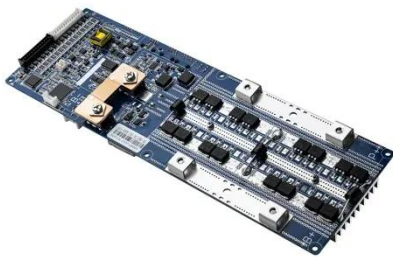
### 12 Volt Battery Run Time Calculator

Jan 31, 2025 · Battery Run Time Calculator. This sizes a 12-volt battery while factoring a 50% depth of discharge to prevent excessively discharging the battery.



### How many watts of inverter can be used with 60ah

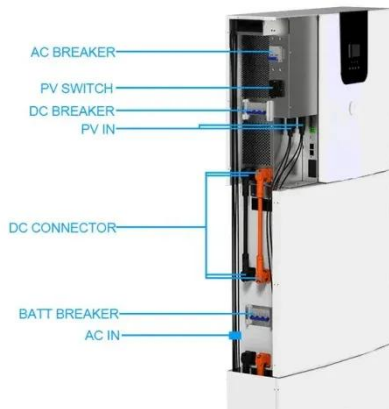
How to Determine the Right Battery Size for a 1500W Inverter To run a 1500W inverter effectively, selecting the appropriate battery size is crucial. The number of batteries required depends on ...



### How Many Batteries for A 5000-Watt

## Inverter?

Apr 26, 2024 · This article will tell you how many batteries are needed for a 5kw inverter. We'll give you two examples of lithium and lead-acid batteries.



## How Can a 1500w Inverter Run and How Many Batteries for It

Mar 10, 2025 · How many batteries are needed for a 1500-watt power inverter, and how many appliances can it run efficiently without requiring much tension? In this guide, We will show ...

## What Appliances can run on a Power inverter?

4 days ago · A power inverter is a device that takes in direct current (DC) and converts this into alternating current (AC) so it can power AC appliances. ...



## How Long Will a Battery Last With an Inverter?

Jul 22, 2022 · One of the most common concerns that irritate solar power system owners is the battery running duration. This is very important since it tells you ...

## Commercial and Industrial ESS

Air Cooling / Liquid Cooling

- Budget Friendly Solution
- Renewable Energy Integration
- Modular Design for Flexible Expansion



## Inverter Size Calculator [Power Inverter, AC, DC, ...

Feb 7, 2025 · Calculate the ideal inverter size with the Inverter Size Calculator. Perfect for selecting inverters for homes, solar panels, or vehicles based on ...



Yes, it is possible to use two inverters with a single battery bank, but there are important considerations to ensure the system operates efficiently and safely. Many off-grid and backup ...

## How Many Batteries Can Be Connected to a 12V ...

Nov 29, 2023 · In conclusion, the number of batteries that can be connected to a 12V inverter depends on various factors such as inverter capacity, battery ...



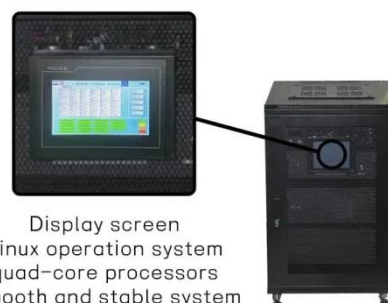


### What amp should I charge my LiFePO4 battery?

Feb 15, 2023 · Figuring out what current you should charge your LiFePO4 battery is easy. There are two factors to consider: The recommended charge current ...

### Luminous Inverlast ILST8036 60AH Tubular Battery - Inverter ...

Luminous Inverlast ILST8036 60AH Tubular Battery at Lowest Price & Fastest Delivery (Same Day). We offer best deal & discounted inverter battery price on Luminous.



Display screen  
Linux operation system  
quad-core processors  
smooth and stable system

### Dakota Lithium Powerbox+ 60

Portable waterproof power station with a 1,000 CCA DL+ 12V 60Ah lithium battery for starting car, boat & truck engines. One lithium battery box to power ...



## 1KVA , 12.8V , 63a 60AH LiFePo4 GR battery DW1100

1KVA , 12.8V , 63a 60AH LiFePo4 GR battery DW1100 Model Number: DW1100 Lithium Hybrid Inverter Specification Charging time 4-5Hrs Input Voltage Max 25 Operating DC Voltage 12.8



## Calculate Battery Size For Any Size Inverter (Using Our ...

This means that your piece of the battery can push a maximum power output of 540W power inverter. Of course, you can also take "one step" type of procurement approach, which is to ...

## What All Can a 60-Watt Solar Panel Power?

Jul 12, 2021 · In this short article, we'll cover what all can a 60-Watt solar panel



can power single-handedly. We'll also talk about information for setting up a 60-Watt solar system along with the ...



### **What Size Inverter Do I Need For My Campervan ...**

Selecting the right inverter for your campervan or motorhome involves matching your 240V appliance usage with the appropriate inverter wattage. By ...

### **Understanding Battery Capacity and Inverter Compatibility**

Aug 20, 2024 · When pairing a 100 Ah lithium battery with a 1000 watt inverter, it is crucial to ensure compatibility to achieve optimal performance. Lithium batteries typically offer better ...



### **Best Battery Combination for 400 and 600 VA ...**

When purchasing 400 or 600 VA inverters, people ask their dealer to suggest an affordable and low cost battery for their low cost 400 or 600 VA

inverters. But ...

## ESS



## Battery Runtime Calculator

How long will your battery last? find out with our easy-to-use battery runtime calculator. Calculator Assumptions This calculator will consider the efficiency ...



## How Big of an Inverter Can My Car Battery Handle?

Mar 26, 2025 · Typically, a 12-volt car battery can support an inverter with a power range of about 150 watts to 1500 watts. Please note, however, that car ...

## How Can a 1500w Inverter Run and How Many ...

Jan 9, 2025 · The guide explains how to calculate battery for a 1500W inverter, covering essential factors like capacity, voltage, and depth of discharge.



## Lithium Battery for Inverter: Pros, Specs, and Tips

Jun 24, 2025 · Lithium batteries offer top performance and long life for inverters. This guide covers all you need to know for your power storage needs.

## 150w inverter, 60w draw, car battery life?

Mar 9, 2007 · Say you were to draw the full 150watts. This means that the battery will be sourcing about 13amps @ 12vcd to the inverter. Most car batteries these days have around a ...



## Can You Mix Batteries with Different Amp-Hour ...

Aug 19, 2024 · Mixing batteries with different amp-hour (Ah) ratings in parallel can be done, but it comes with significant risks and considerations that

must be ...



---

## How Long Will A Car Battery Run An Inverter? Calculate ...

Mar 13, 2025 · A 60Ah car battery can power an inverter that requires 92.6A for about 0.65 hours. This means the battery life is approximately 39 minutes. The calculation is: Battery life = ...



---

## Can You Mix Different Capacity Lithium ...

Jun 20, 2023 · A comprehensive guide to mixing different capacity lithium batteries. Dive into the crucial aspects of voltage, BMS, fuses, and more.

---

## Battery Charger Size Chart (Buyers guide)

May 17, 2022 · With the right battery charger size, your battery can efficiently charge, providing high performance and maximized cycle life. Conversely, ...



### What size inverter can you run off a car battery?

Aug 11, 2025 · A typical 12-volt car battery can safely support an inverter ranging from about 150 watts up to 600 watts for regular use without harming the battery. While it is technically ...

### Lithium Batteries: What Size Inverter Can I Use?

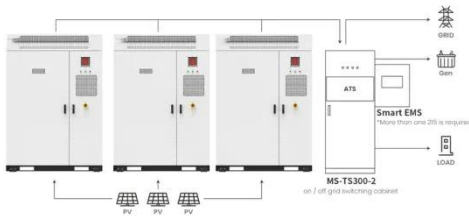
When calculating the amp usage of an inverter, you take the output wattage of the inverter and divide it by the battery voltage, i.e.  $1000W \div 12V = 83.33$  Amps. ...



### 150w inverter, 60w draw, car battery life?

Mar 9, 2007 · Most car batteries these days have around a 60amp/hour rating before they die. This means that with a 60Ah battery, you should be able to run

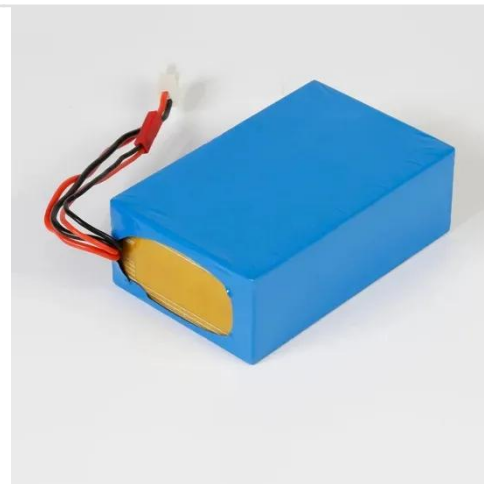
the inverter for about 4 hours ...



#### Application scenarios of energy storage battery products

### How Long Will A Car Battery Last With An Inverter? Calculate ...

Mar 13, 2025 · A 60Ah car battery can last about 39 minutes with a 92.6A inverter. To estimate battery life, use this formula: Battery life = Battery capacity (Ah) / Inverter current (A). So, 60Ah ...



### How big of an inverter can a 60ah battery be connected to

How many batteries can a 36V inverter charge? If there are three 12V 200ah batteries, the battery voltage is 36V (12V x 3 = 36). An inverter with a 36V can recharge these batteries. The ...

### Kings second battery setup with Power inverter

Kings battery setup - 60AH lithium battery, Battery box, 500w inverter. Only used a handful of times and everything



is in great working order. Selling as



### **How long will a 12 volt battery last with a 1000 watt power inverter**

Jun 20, 2024 · Battery capacity and run time Suppose we use a 60Ah car battery. The battery capacity is 60Ah, which means it can provide 60A of current for 1 hour. In theory, if the inverter ...

### **How Many Watts Can a 60 Amp Charge Controller Handle?**

Can your 60 amp charge controller handle your solar system? Use this simple guide to find out how many watts your controller can work with.



## **Contact Us**

For catalog requests, pricing, or partnerships, please visit:  
<https://www.wf-budownictwo.pl>